

Montgomery College—Course Placements & Assessment Levels



Almost all of the courses taught at Montgomery College require students to have a certain knowledge base in English, reading and sometimes math. These requirements are called assessment levels. For example, for students in their first semester to enroll in Introduction to Business (BA101), they must place into **EN 101/101A, RD 120 & MA097/MA099** based on their Accuplacer, SAT, ACT, IELTS or TOEFL scores.

My Course Placements

Reading Course (RD): _____

English Course (EN): _____

Math Course (MA): _____

Recommended
Student Development
Course (DS): _____

ACCUPLACER

Score	Reading:	Reading Course
	34 and below	Cannot take credit classes — See WDCE Classes
	35-52	Cannot take credit classes — See Pathways Program (http://www.montgomerycollege.edu/Departments/studev/path.htm)
	53-65	RD095
	66-78	RD099
	79+	RD120 (optional)

Score	Sentence Skills:	English Course
	79 and below & Reading 53 and above	EN001
	80-89 & Reading 53 and above	EN002
	90+ & Reading 79+	EN101A/EN 101
	115+ & Reading 79	possible EN102 or 109 (complete “check on placement” essay in Assessment Center)

Score	Elementary Algebra:	Math Course
	61 or below	MA094
	62-74	MA097 or MA099 or MA099 w/ MA105

IF
If Elem. Algebra Score = 75 or higher

Score	College Level Math:	Math Course* (must also meet English/Reading assessment levels)
	0-44	MA115A
	45-52	MA110, MA113, MA115, MA116
	53-59	MA105, MA130, MA160
	60-86	MA180
	87+	MA181

THEN

* or any lower numbered course

SAT

Score	Critical Reading Score	English Course
	550-599	EN101/101A & RD120 (exempt)
	600+	possible EN102 or 109 (complete “check on placement” essay in Assessment Center)

Score	Math Score	Math Course (* also requires EN101/RD120 placement)
	550-599	MA105, MA110, MA113, MA116, MA115, MA 130, MA160
	600+	MA 180 (contact Math Dept. if higher level course is desired)

ACT

Score	English Score	English Course
	24+	EN101/101A & RD120 (exempt)
	27+	possible EN102 or 109 (complete “check on placement” essay in Assessment Center)

Score	Math Score	Math Course (* also requires EN101/RD120 placement)
	24+	MA105, MA110, MA113, MA115, MA116, MA130, MA160
	26+	MA 180 (contact Math Dept. if higher level course is desired)

TOEFL

Score	Score by Format	English Course
	575+ (TOEFL-Paper & Pencil)	EN101/101A & RD120 (exempt)
	90+ (TOEFL-Internet Based)	EN101/101A & RD120 (exempt)

IELTS

Score	Score	English Course
	6.5	EN101/101A & RD120 (exempt)



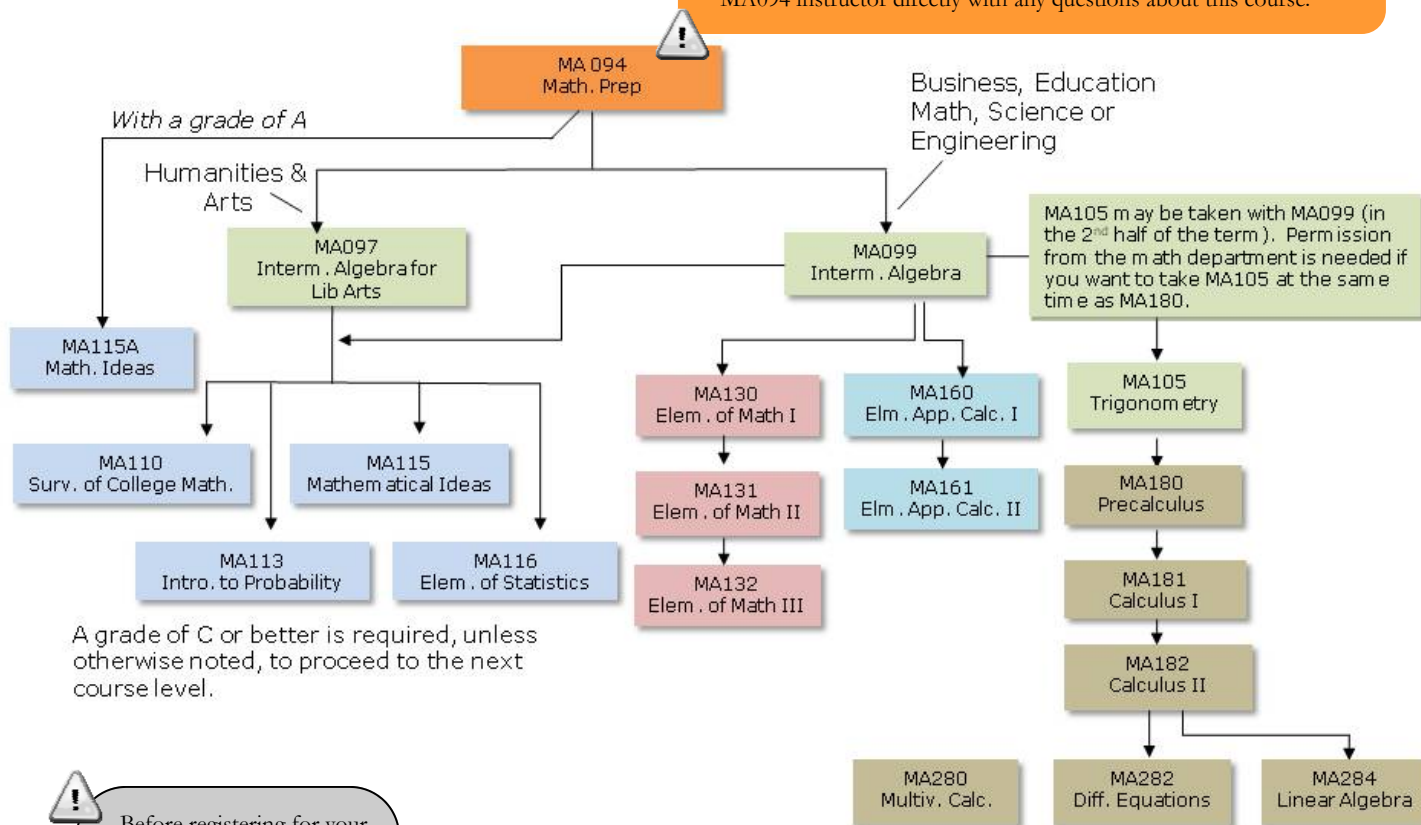
If you completed college-level English and/or math with a ‘C’ or better at another school, bring an unofficial transcript to Admissions and Records to obtain a global override for course assessment levels.

FAUV 55 = Prior U.S. Degree (2-Year or Higher)
FAUV 35 = Prior English (U.S. College)

Montgomery College—Course Placements & Assessment Levels

Get on the Right Math Path!

MA 094 is a self-paced course and consists of two parts. You are expected to complete the course within two semesters, depending on where you start (Part I or Part II). Consult the math department or your MA094 instructor directly with any questions about this course.



A grade of C or better is required, unless otherwise noted, to proceed to the next course level.

Before registering for your math course, check to the requirements for your major. Also, check Reading/ English assessment levels to determine if you are eligible to register for the math course.

Math Classes	Min. Assessment Levels
MA094	RD099 or RD103
MA097, MA099, MA105	RD120
MA110 or higher	EN101 & RD120

As you finish MA094, it is **critical that you consult with an Advisor to ensure the selection of the appropriate mathematics course. If you are uncertain of your long term goals & have not chosen a major, **MA099 will meet the prerequisite requirements for ANY higher level mathematics course.**

MA097 or MA099?

MA 097 Intermediate Algebra for Liberal Arts

Three hours each week. No credit/No quality points

Development of algebraic and problem-solving skills and concepts intended to prepare students for a mathematics foundation course. Topics include linear, quadratic, and exponential equations, functions and their applications, modeling and data analysis. This course does not satisfy the prerequisite for MA 130, MA 160, or MA 180. Not intended for students who have a grade of C or better in MA 099, or their equivalent.

PREREQUISITE: A grade of C or better in MA 094, appropriate score on the mathematics placement test, or consent of the department. Assessment level: RD 120.

MA 099 Intermediate Algebra

Four hours each week. No credit/No quality points

An examination of algebraic skills and concepts intended to prepare students for MA 130, MA 160, and MA 180. Algebraic, graphical, numerical, and verbal approaches are used in working with a variety of functions and their applications, including linear, polynomial, exponential, logarithmic, rational, and radical functions. Solve systems of equations. PREREQUISITE: A grade of C or better in MA 094, appropriate score on the mathematics placement test, or consent of the department. Assessment level: RD 120. For computation of tuition, this course is equivalent to four semester hours.