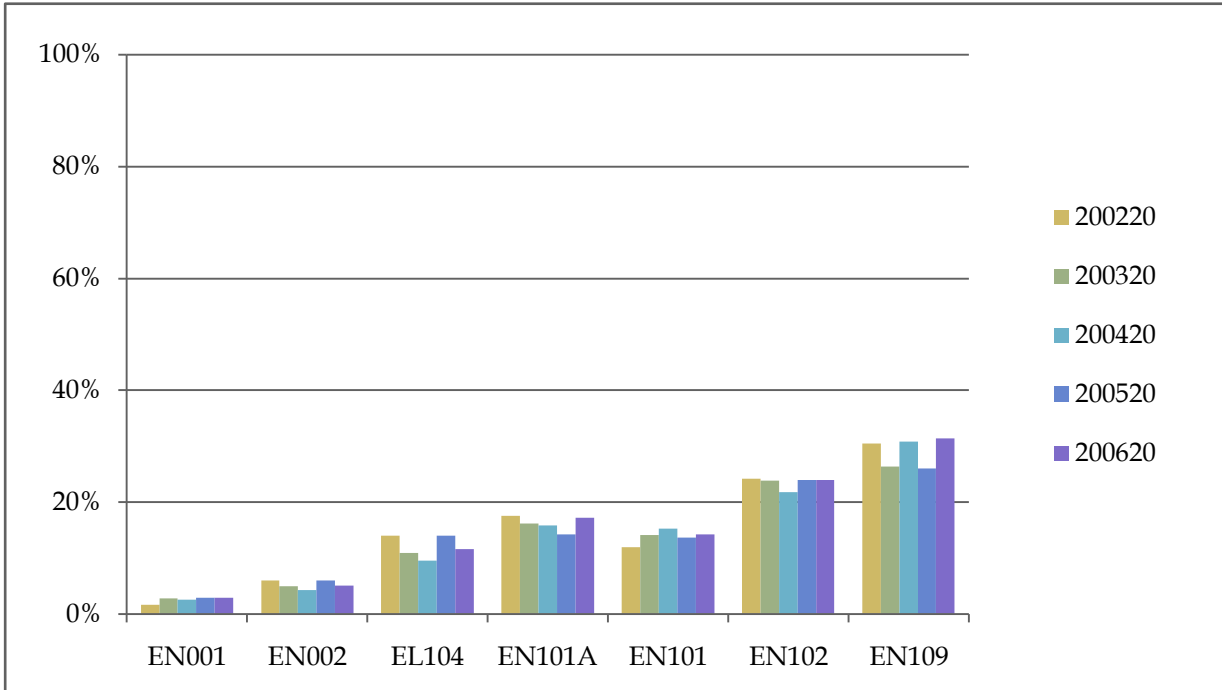


Percentage of Cohort Graduated within Three Years of This Attempt

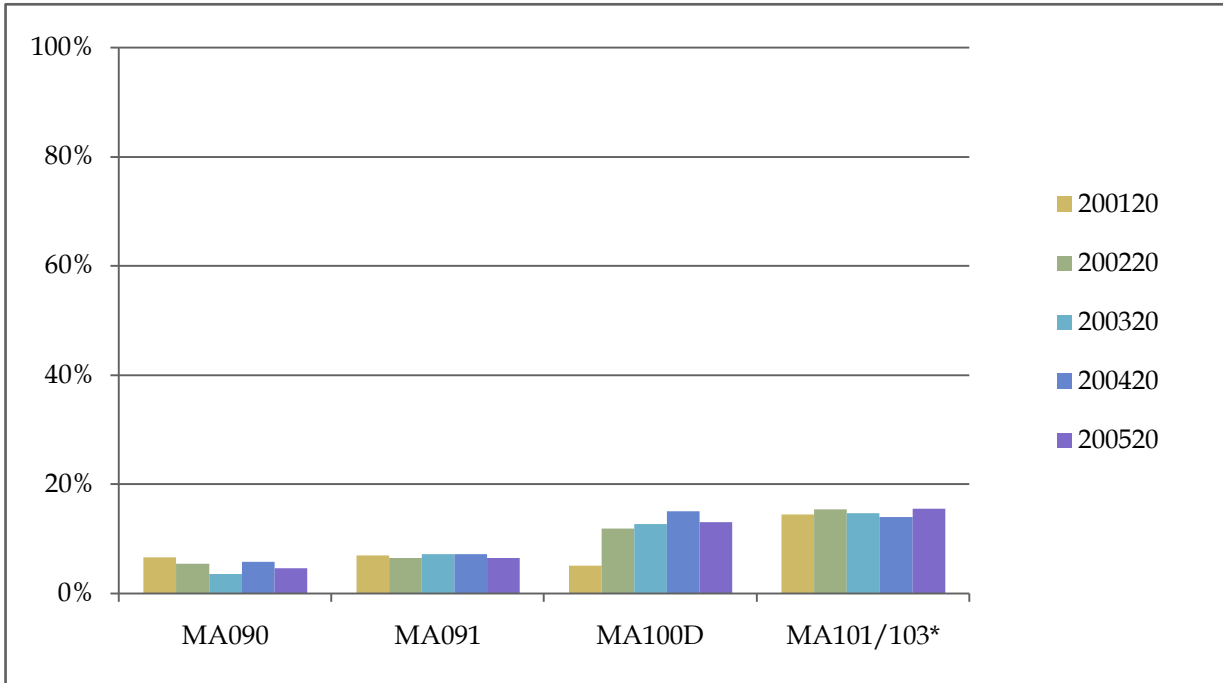
	199920	200020	200120	200220	200320	200420	200520	200620
EN001	2%	1%	5%	2%	3%	3%	3%	3%
EN002	3%	2%	4%	6%	5%	4%	6%	5%
EL104	6%	9%	10%	14%	11%	9%	14%	11%
EN101A	7%	9%	14%	18%	16%	16%	14%	17%
EN101	8%	10%	11%	12%	14%	15%	14%	14%
EN102	16%	18%	19%	24%	24%	22%	24%	24%
EN109				30%	26%	31%	26%	31%



Percentage of each of the last five fall cohorts that has earned a degree or certificate within three years.

Percentage of Cohort Graduated within Three Years of This Attempt

	199920	200020	200120	200220	200320	200420	200520	200620
MA090	4%	4%	7%	5%	3%	6%	5%	4%
MA091	7%	8%	7%	6%	7%	7%	6%	8%
MA100D	n/a	18%	5%	12%	13%	15%	13%	12%
MA101/103*	n/a	11%	14%	15%	15%	14%	15%	17%

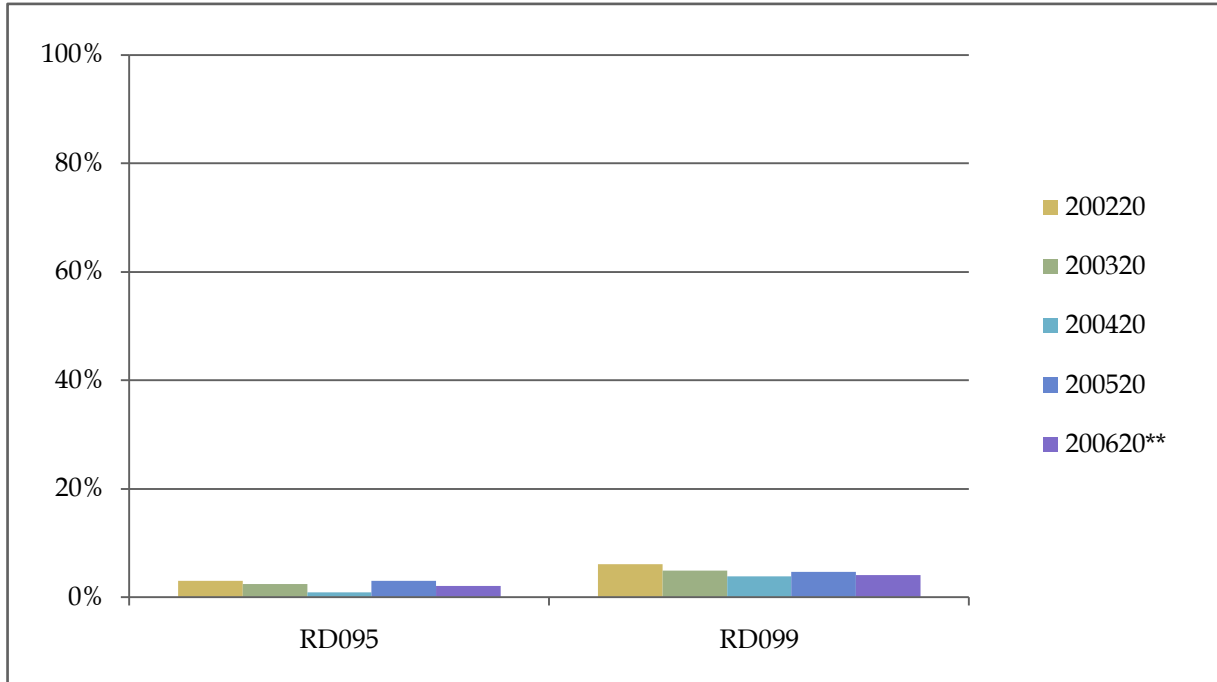


Percentage of each of the last five fall cohorts that has earned a degree or certificate within three years.

* Prior to fall 2006 (200720) these data refer to MA100.

Percentage of Cohort Graduated within Three Years of This Attempt

	199920	200020	200120	200220	200320	200420	200520	200620**
RD095	2%	1%	3%	3%	2%	1%	3%	2%
RD099	3%	3%	6%	6%	5%	4%	5%	4%



Percentage of each of the last five fall cohorts that has earned a degree or certificate within three years.

**** In fall 2005 (200620) RD095, a 5 hour course, replaced RD089, a 3 hour course.**