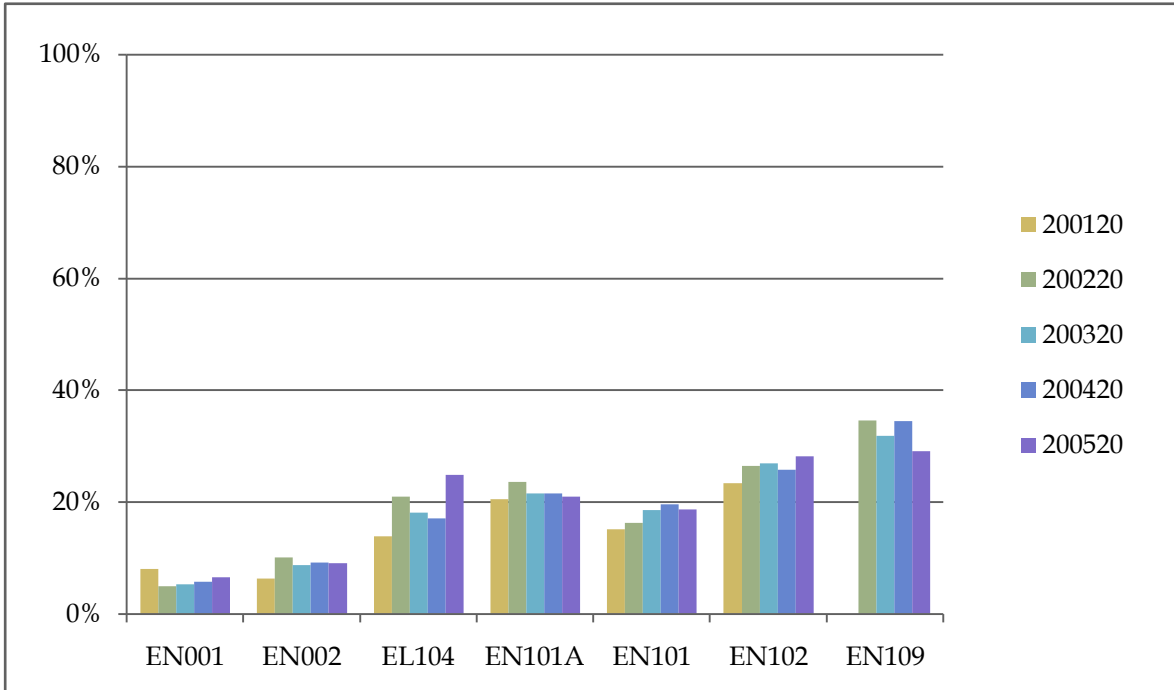


Percentage of Cohort Graduated within Four Years of This Attempt

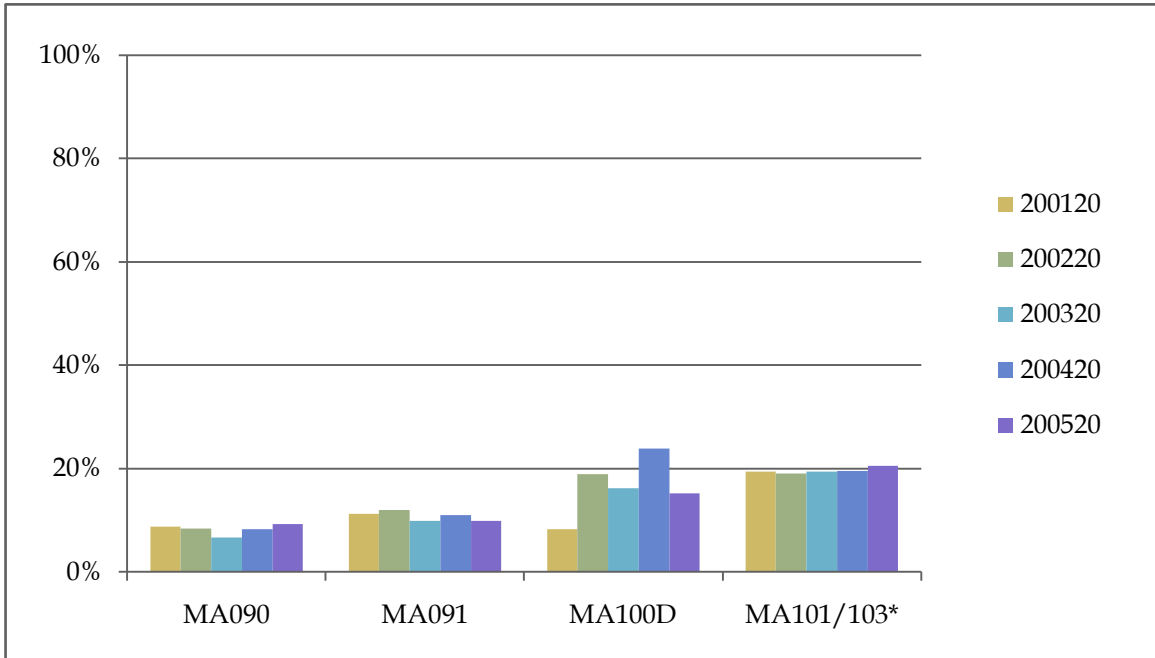
	199820	199920	200020	200120	200220	200320	200420	200520
EN001	5%	4%	3%	8%	5%	5%	6%	6%
EN002	2%	6%	5%	6%	10%	9%	9%	9%
EL104	11%	13%	16%	14%	21%	18%	17%	25%
EN101A	9%	11%	13%	20%	24%	21%	21%	21%
EN101	9%	11%	14%	15%	16%	19%	20%	19%
EN102	20%	19%	22%	23%	26%	27%	26%	28%
EN109					35%	32%	34%	29%



Percentage of each of the last five fall cohorts that has earned a degree or certificate within four years.

Percentage of Cohort Graduated within Four Years of This Attempt

	199820	199920	200020	200120	200220	200320	200420	200520
MA090	5%	6%	6%	9%	8%	7%	8%	9%
MA091	11%	10%	11%	11%	12%	10%	11%	10%
MA100D	n/a	n/a	27%	8%	19%	16%	24%	15%
MA101/103*	n/a	n/a	16%	19%	19%	19%	20%	21%

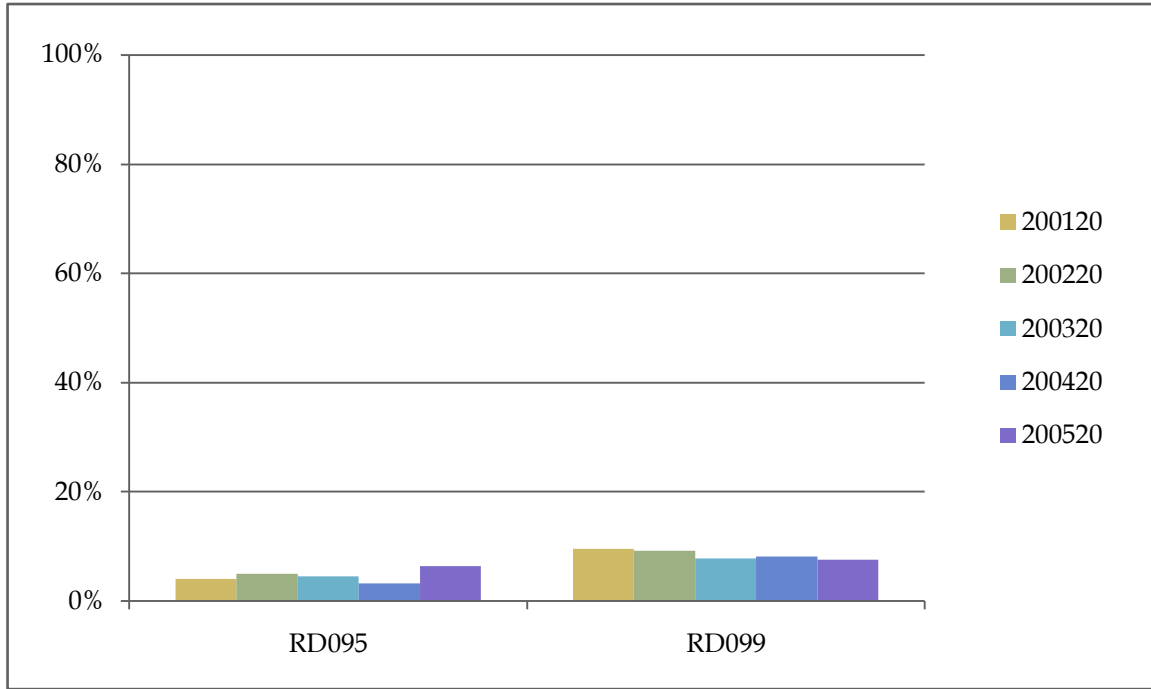


Percentage of each of the last five fall cohorts that has earned a degree or certificate within four years.

* Prior to fall 2006 (200720) these data refer to MA100.

Percentage of Cohort Graduated within Four Years of This Attempt

	199820	199920	200020	200120	200220	200320	200420	200520
RD095	4%	4%	4%	4%	5%	5%	3%	6%
RD099	4%	7%	6%	10%	9%	8%	8%	8%



Percentage of each of the last five fall cohorts that has earned a degree or certificate within four years.

**** In fall 2005 (200620) RD095, a 5 hour course, replaced RD089, a 3 hour course.**