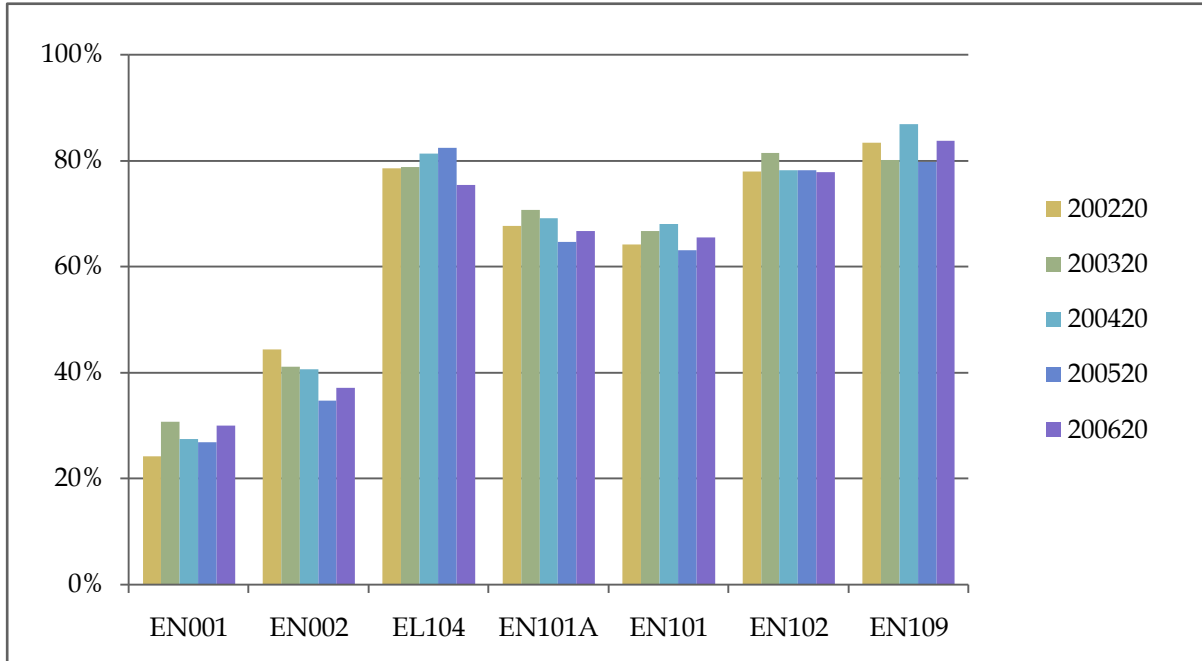


Percentage of Cohort Having Earned at Least 15 Credits with a 2.0 or Better GPA

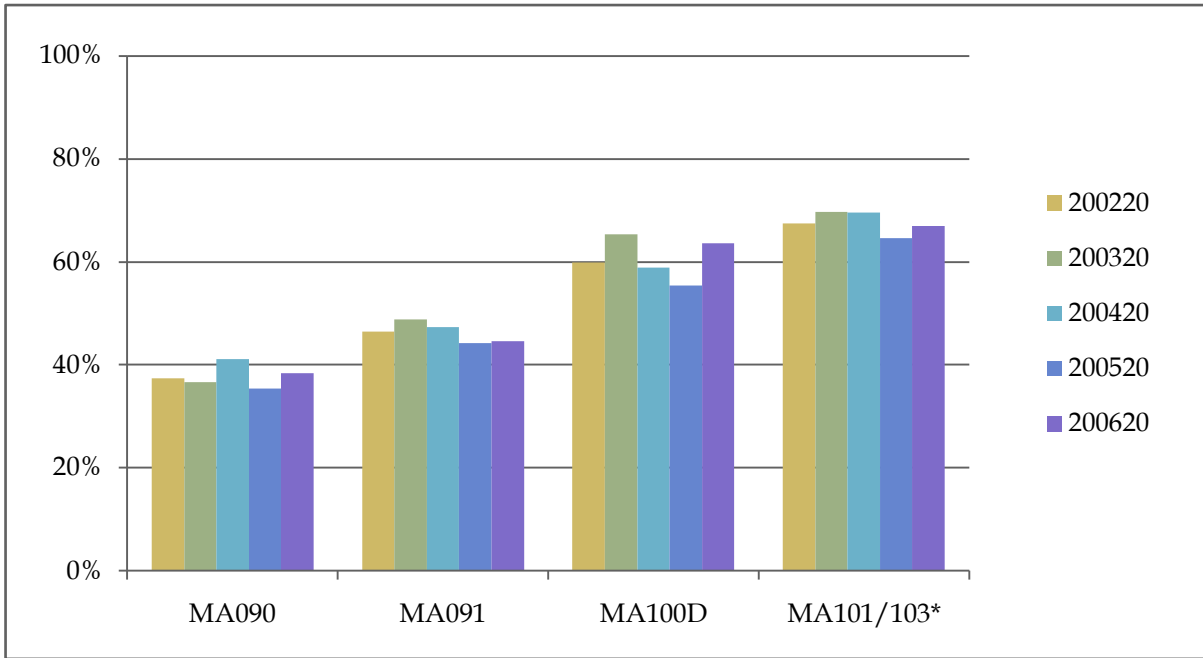
	199920	200020	200120	200220	200320	200420	200520	200620
EN001	21%	22%	29%	24%	31%	28%	27%	30%
EN002	31%	32%	39%	44%	41%	41%	35%	37%
EL104	75%	77%	74%	78%	79%	81%	82%	75%
EN101A	54%	54%	71%	68%	71%	69%	65%	67%
EN101	57%	58%	63%	64%	67%	68%	63%	65%
EN102	76%	76%	76%	78%	81%	78%	78%	78%
EN109				83%	80%	87%	80%	84%



Percentage of each of the last five fall cohorts that has earned at least 15 credit hours with a 2.0 or better GPA within two years.

Percentage of Cohort Having Earned at Least 15 Credits with a 2.0 or Better GPA

	199920	200020	200120	200220	200320	200420	200520	200620
MA090	34%	34%	39%	37%	37%	41%	35%	38%
MA091	53%	48%	46%	46%	49%	47%	44%	45%
MA100D	n/a	69%	57%	60%	65%	59%	55%	64%
MA101/103*	n/a	65%	66%	67%	70%	70%	65%	67%

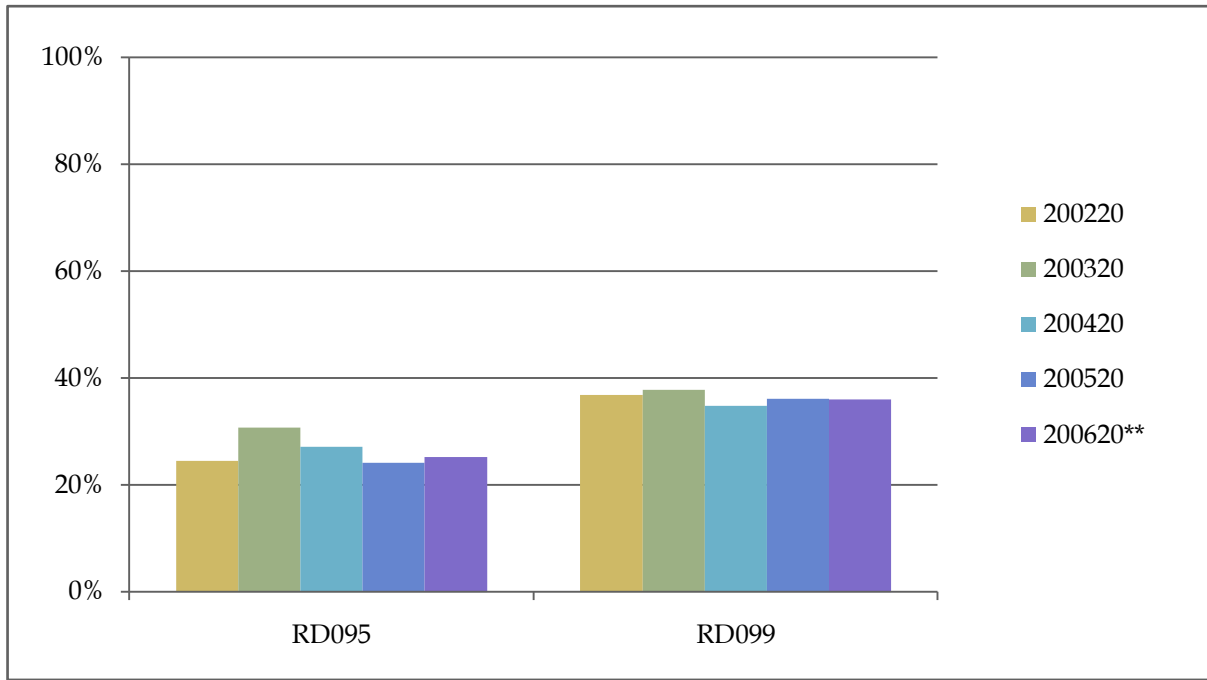


Percentage of each of the last five fall cohorts that has earned at least 15 credit hours with a 2.0 or better GPA within two years.

* Prior to fall 2006 (200720) these data refer to MA100.

Percentage of Cohort Having Earned at Least 15 Credits with a 2.0 or Better GPA

	199920	200020	200120	200220	200320	200420	200520	200620**
RD095	18%	19%	25%	24%	31%	27%	24%	25%
RD099	34%	32%	38%	37%	38%	35%	36%	36%



Percentage of each of the last five fall cohorts that has earned at least 15 credit hours with a 2.0 or better GPA within two years.

**** In fall 2005 (200620) RD095, a 5 hour course, replaced RD089, a 3 hour course.**