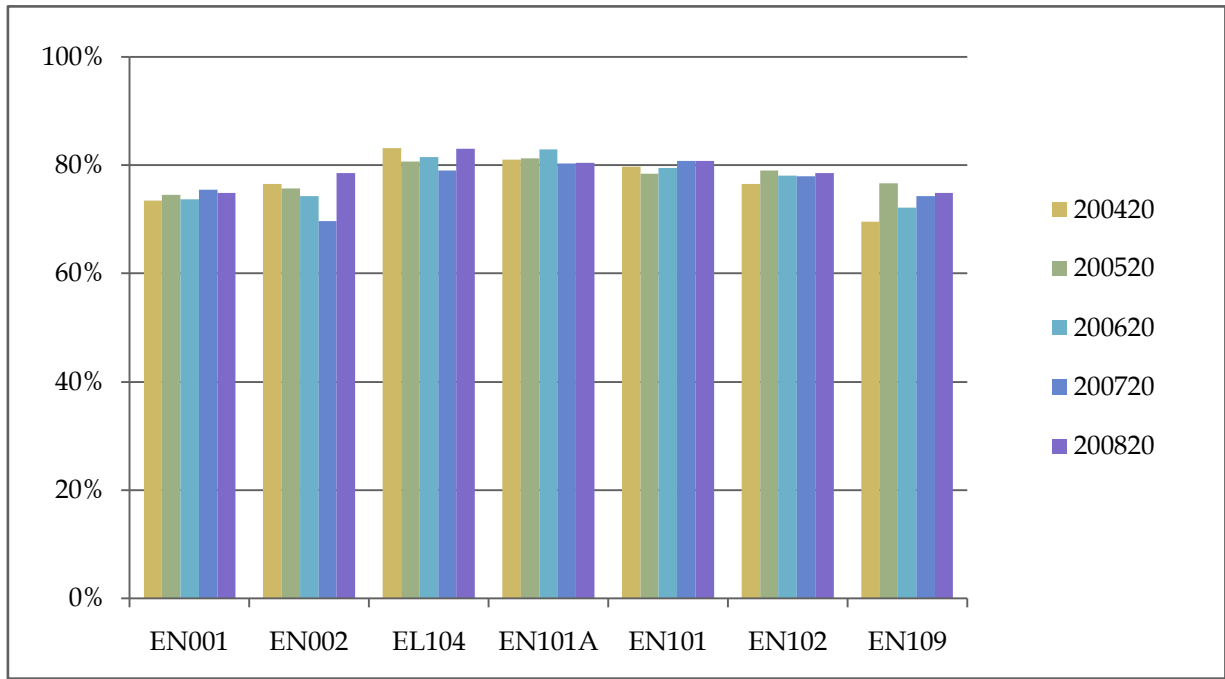


**Percentage of Cohort Enrolled the Following Spring**

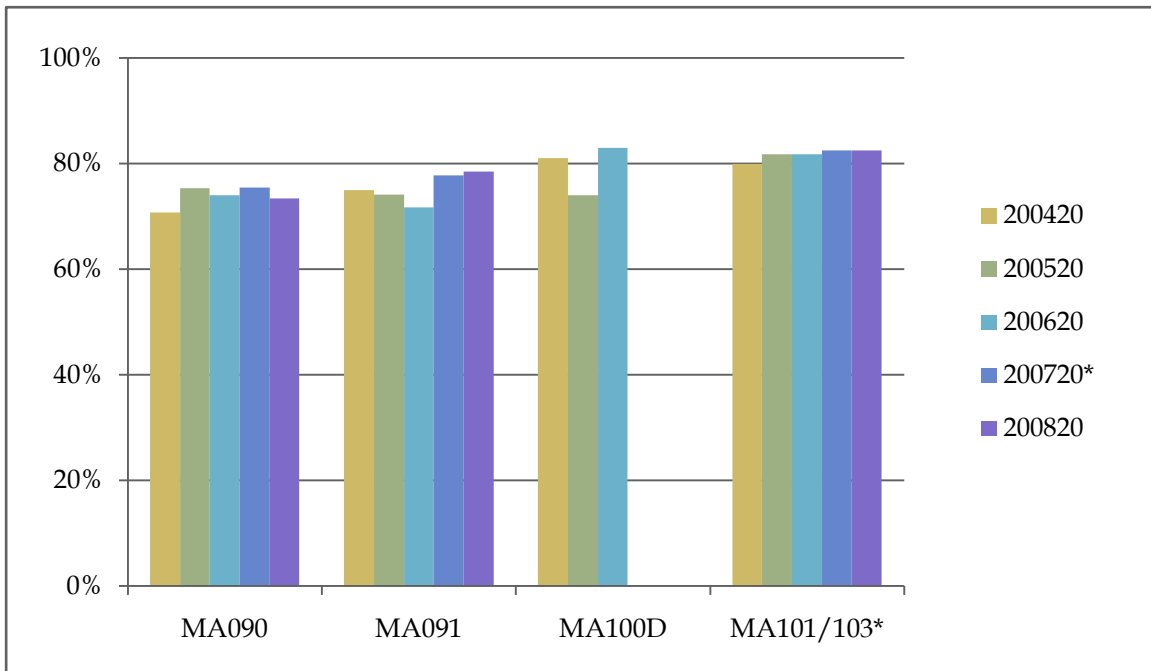
	<b>200120</b>	<b>200220</b>	<b>200320</b>	<b>200420</b>	<b>200520</b>	<b>200620</b>	<b>200720</b>	<b>200820</b>
<b>EN001</b>	71%	69%	73%	74%	75%	74%	76%	75%
<b>EN002</b>	68%	79%	75%	77%	76%	74%	70%	79%
<b>EL104</b>	81%	82%	82%	83%	81%	82%	79%	83%
<b>EN101A</b>	77%	83%	81%	81%	81%	83%	80%	81%
<b>EN101</b>	77%	76%	78%	80%	79%	79%	81%	81%
<b>EN102</b>	73%	77%	78%	77%	79%	78%	78%	79%
<b>EN109</b>		66%	69%	70%	77%	72%	74%	75%



**Percentage of each of the five most recent fall cohorts that returned to MC in the spring term.**

**Percentage of Cohort Enrolled the Following Spring**

	<b>200120</b>	<b>200220</b>	<b>200320</b>	<b>200420</b>	<b>200520</b>	<b>200620</b>	<b>200720*</b>	<b>200820</b>
<b>MA090</b>	72%	70%	73%	71%	75%	74%	76%	73%
<b>MA091</b>	75%	73%	73%	75%	74%	72%	78%	79%
<b>MA100D</b>	72%	83%	79%	81%	74%	83%	n/a	n/a
<b>MA101/103*</b>	78%	77%	80%	80%	82%	82%	83%	83%

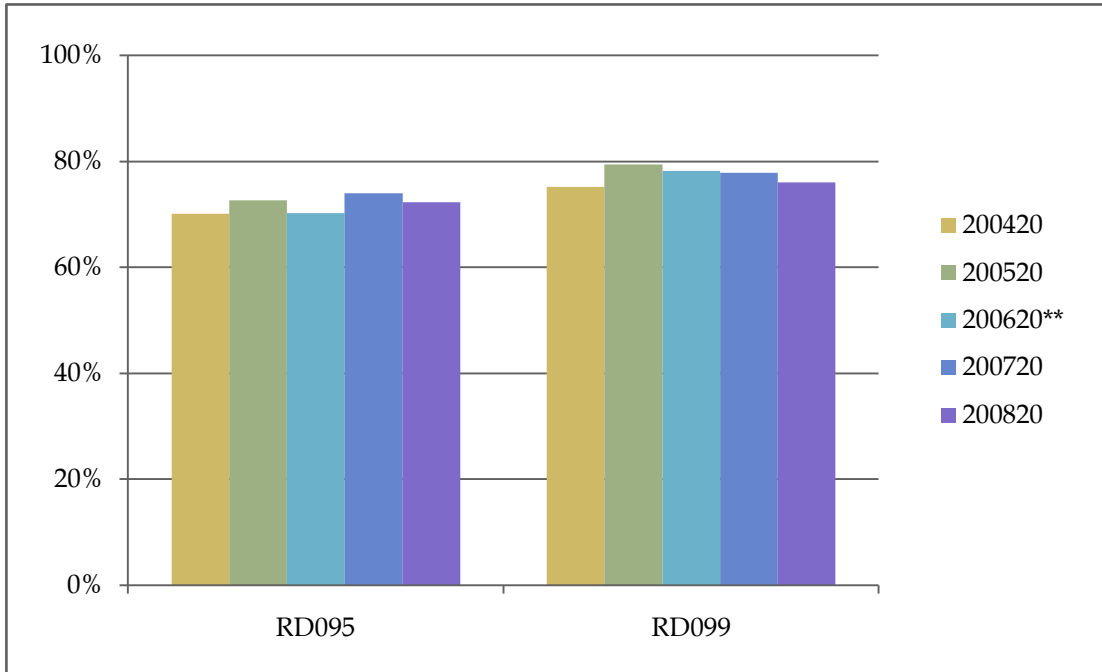


**Percentage of each of the five most recent fall cohorts that returned to MC in the spring term.**

**\* Prior to fall 2006 (200720) these data refer to MA100.**

**Percentage of Cohort Enrolled the Following Spring**

	<b>200120</b>	<b>200220</b>	<b>200320</b>	<b>200420</b>	<b>200520</b>	<b>200620**</b>	<b>200720</b>	<b>200820</b>
<b>RD095</b>	71%	72%	74%	70%	73%	70%	74%	72%
<b>RD099</b>	75%	75%	74%	75%	79%	78%	78%	76%



**Percentage of each of the five most recent fall cohorts that returned to MC in the spring term.**

**\*\* In fall 2005 (200620) RD095, a 5 hour course, replaced RD089, a 3 hour course.**