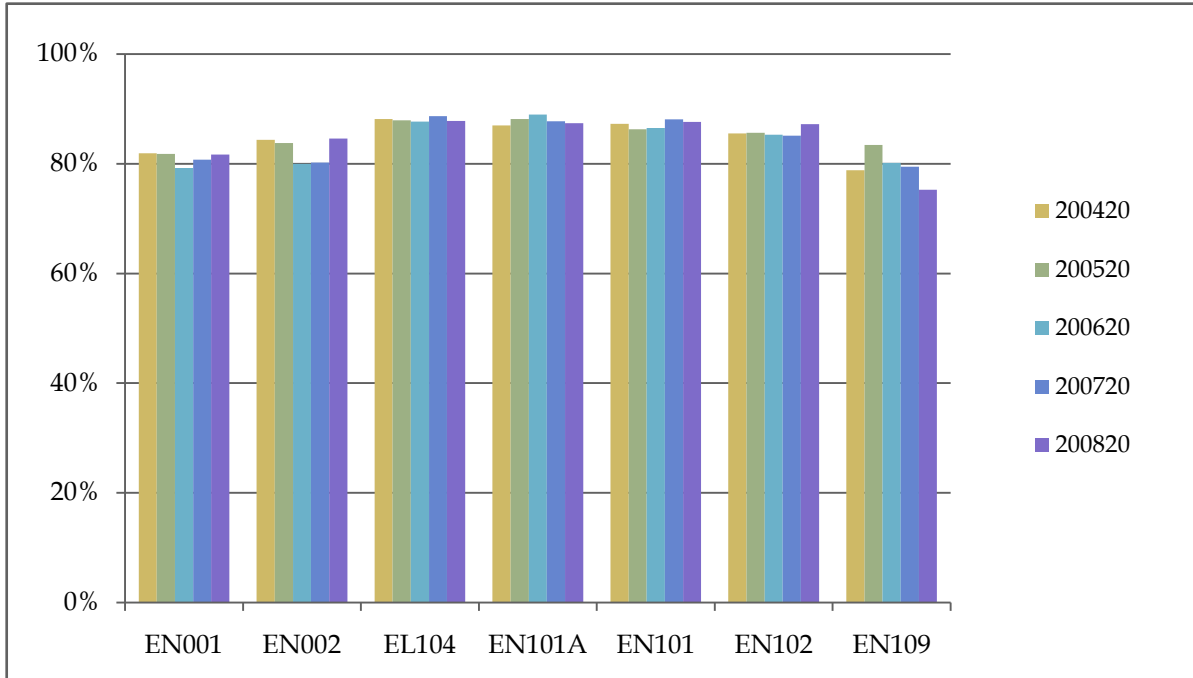


Percentage of Cohort Returning to MC at Some Point within Two Years

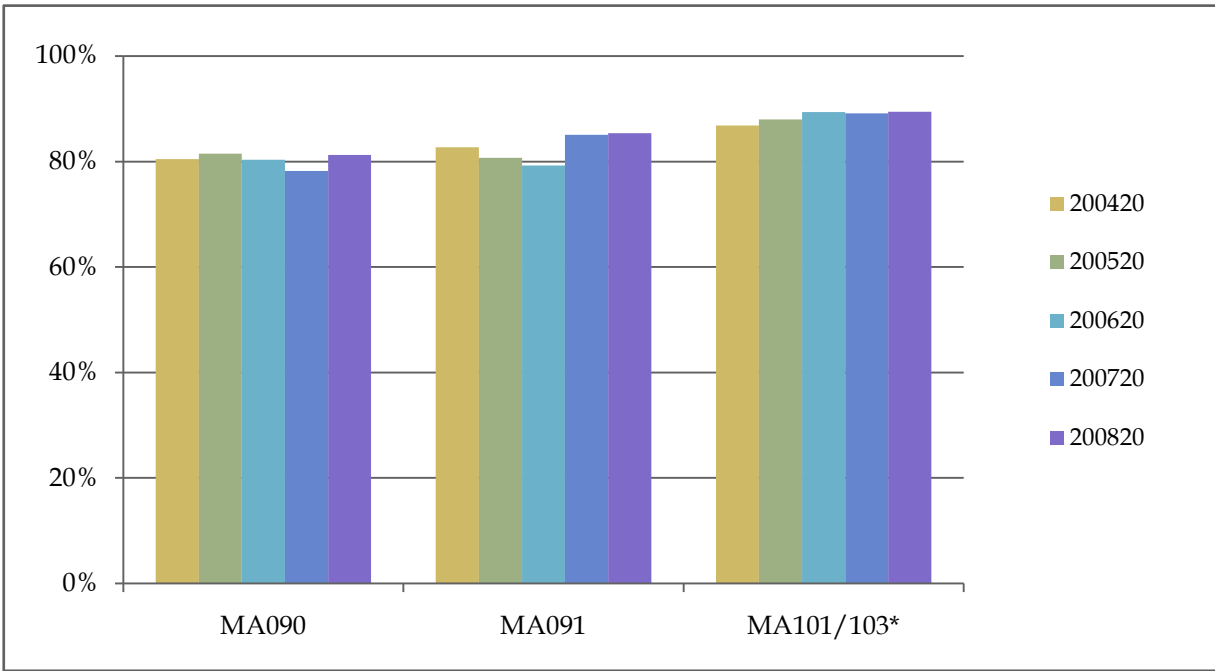
	200120	200220	200320	200420	200520	200620	200720	200820
EN001	77%	76%	79%	82%	82%	79%	81%	82%
EN002	76%	85%	80%	84%	84%	80%	80%	85%
EL104	86%	87%	86%	88%	88%	88%	89%	88%
EN101A	84%	89%	88%	87%	88%	89%	88%	87%
EN101	84%	84%	86%	87%	86%	87%	88%	88%
EN102	81%	84%	86%	86%	86%	85%	85%	87%
EN109		77%	78%	79%	83%	80%	79%	75%



Percentage of each of the five most recent fall cohorts that returned to MC at some point in the following two years.

Percentage of Cohort Returning to MC at Some Point within Two Years

	200120	200220	200320	200420	200520	200620	200720	200820
MA090	78%	77%	80%	80%	81%	80%	78%	81%
MA091	81%	81%	80%	83%	81%	79%	85%	85%
MA101/103*	85%	85%	87%	87%	88%	89%	89%	89%

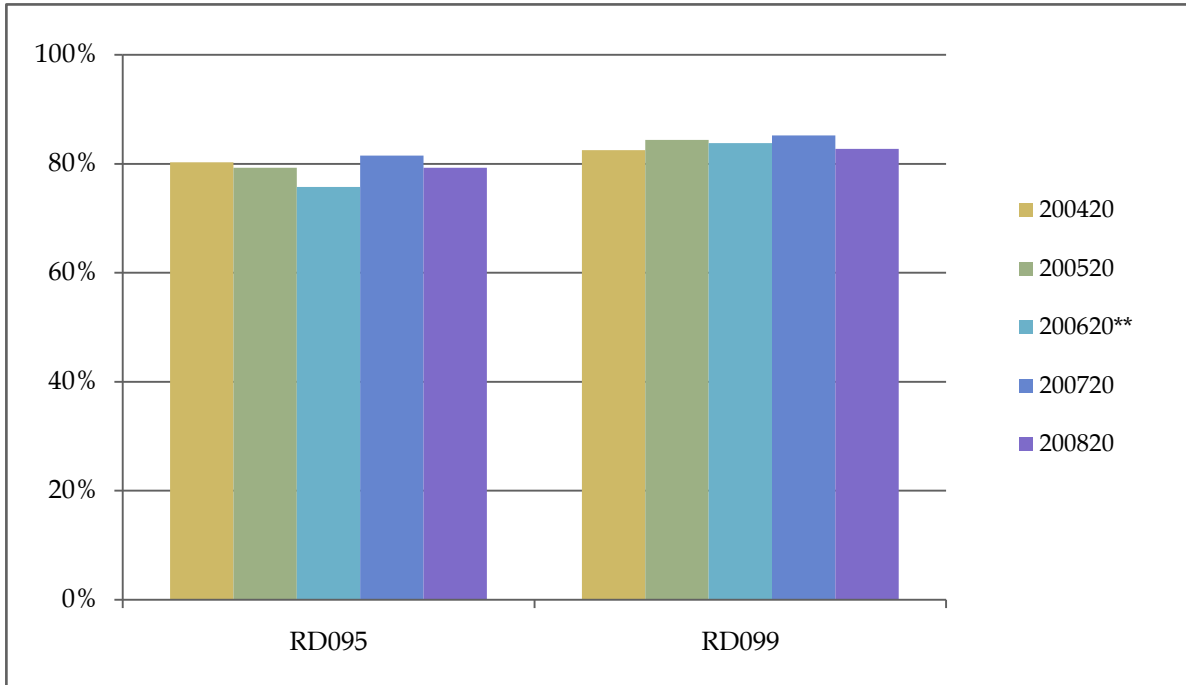


Percentage of each of the five most recent fall cohorts that returned to MC at some point in the following two years.

* Prior to fall 2006 (200720) these data refer to MA100.

Percentage of Cohort Returning to MC at Some Point within Two Years

	200120	200220	200320	200420	200520	200620**	200720	200820
RD095	76%	76%	79%	80%	79%	76%	81%	79%
RD099	80%	83%	81%	82%	84%	84%	85%	83%



Percentage of each of the five most recent fall cohorts that returned to MC at some point in the following two years.

**** In fall 2005 (200620) RD095, a 5 hour course, replaced RD089, a 3 hour course.**