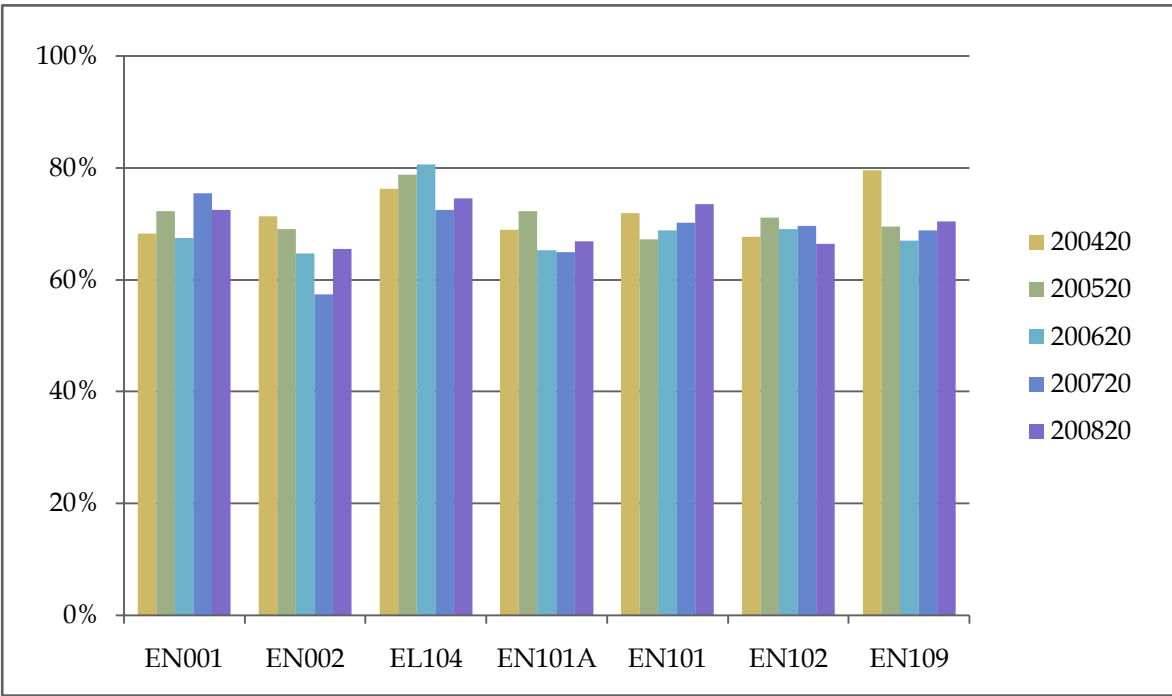


Percentage of Cohort Earning "C" or Better on First Attempt

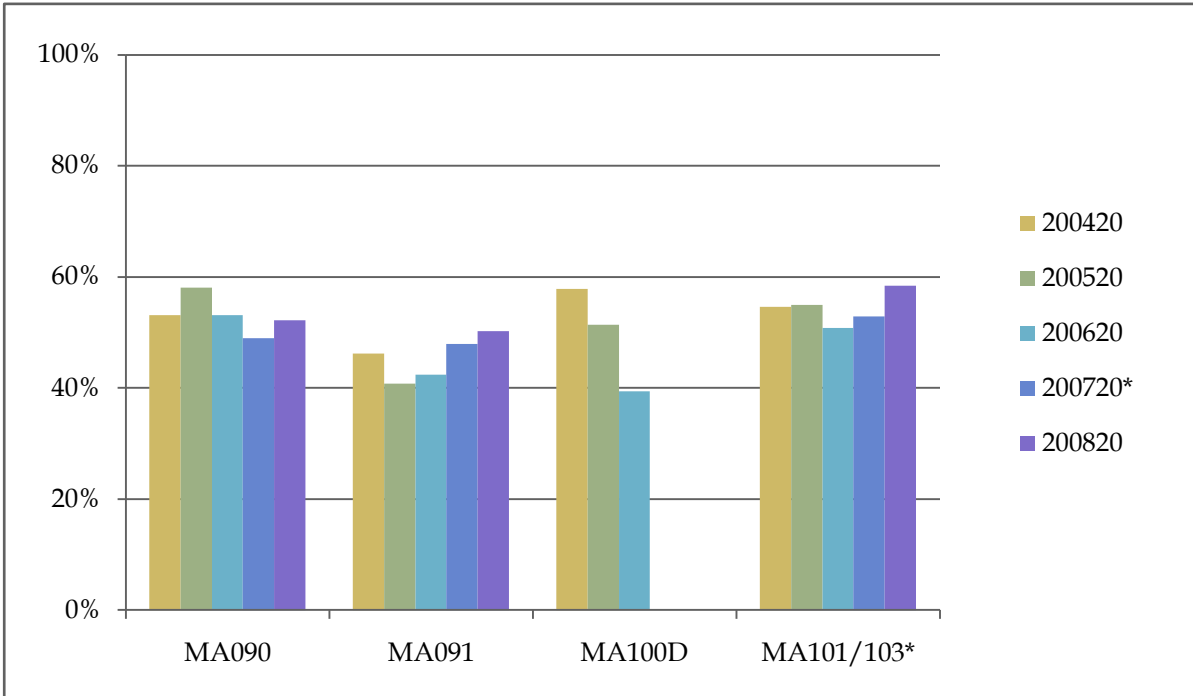
	200120	200220	200320	200420	200520	200620	200720	200820
EN001	66%	68%	72%	68%	72%	67%	76%	73%
EN002	59%	64%	65%	71%	69%	65%	57%	66%
EL104	66%	76%	72%	76%	79%	81%	73%	75%
EN101A	55%	68%	63%	69%	72%	65%	65%	67%
EN101	63%	68%	71%	72%	67%	69%	70%	74%
EN102	70%	72%	70%	68%	71%	69%	70%	66%
EN109		77%	74%	80%	70%	67%	69%	71%



Percentage of each cohort that earned a "C" or better in the five most recent fall terms.

Percentage of Cohort Earning "C" or Better on First Attempt

	200120	200220	200320	200420	200520	200620	200720*	200820
MA090	57%	58%	52%	53%	58%	53%	49%	52%
MA091	45%	46%	45%	46%	41%	42%	48%	50%
MA100D	55%	64%	66%	58%	51%	39%	n/a	n/a
MA101/103*	55%	54%	59%	55%	55%	51%	53%	58%

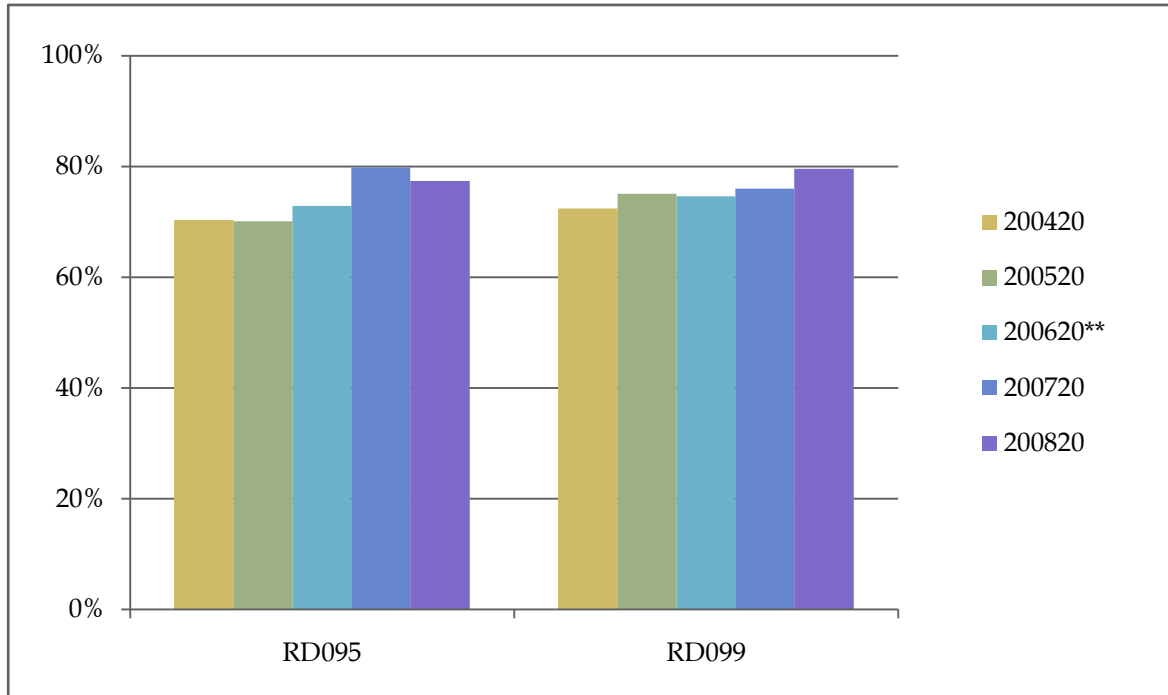


Percentage of each cohort that earned a "C" or better in the five most recent fall terms.

*** Prior to fall 2006 (200720) these data refer to MA100.**

Percentage of Cohort Earning "C" or Better on First Attempt

	200120	200220	200320	200420	200520	200620**	200720	200820
RD095	74%	70%	72%	70%	70%	73%	80%	77%
RD099	76%	78%	77%	73%	75%	75%	76%	80%



Percentage of each cohort that earned a "C" or better in the five most recent fall terms.

**** In fall 2005 (200620) RD095, a 5 hour course, replaced RD089, a 3 hour course.**