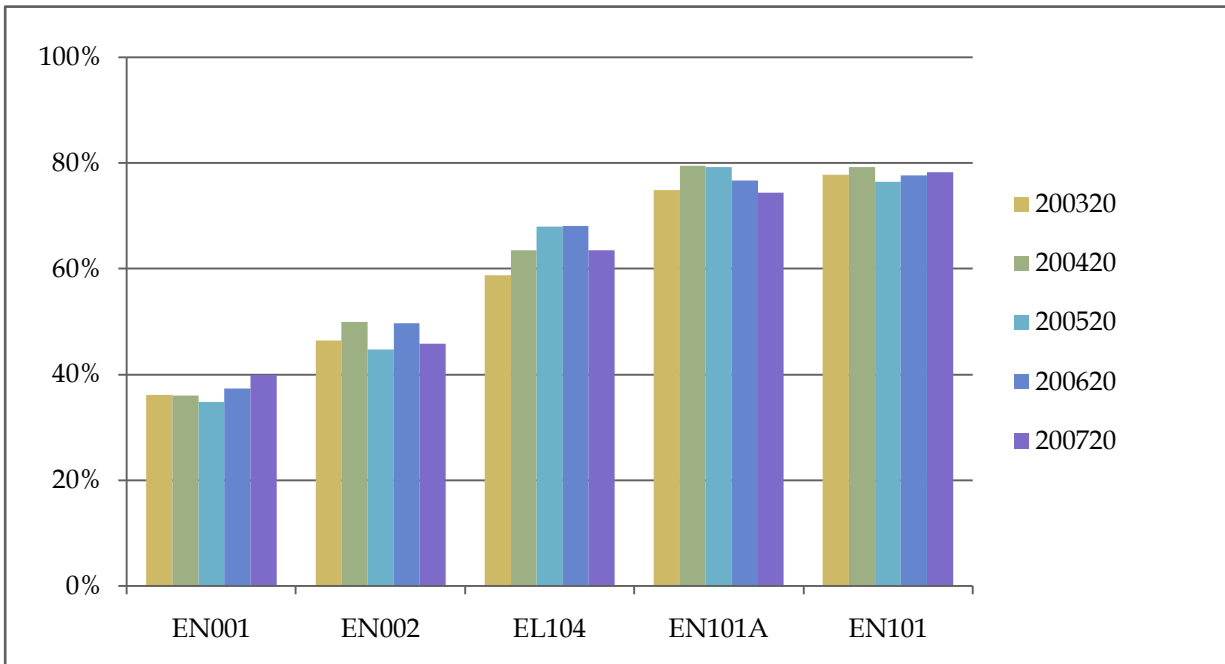


**Percentage of Cohort Passing Threshold\* Course within Two Years**

	<b>200020</b>	<b>200120</b>	<b>200220</b>	<b>200320</b>	<b>200420</b>	<b>200520</b>	<b>200620</b>	<b>200720</b>
<b>EN001</b>	25%	35%	34%	36%	36%	35%	37%	40%
<b>EN002</b>	16%	46%	51%	46%	50%	45%	50%	46%
<b>EL104</b>	44%	46%	58%	59%	64%	68%	68%	64%
<b>EN101A</b>	63%	68%	79%	75%	79%	79%	77%	74%
<b>EN101</b>	72%	73%	78%	78%	79%	77%	78%	78%

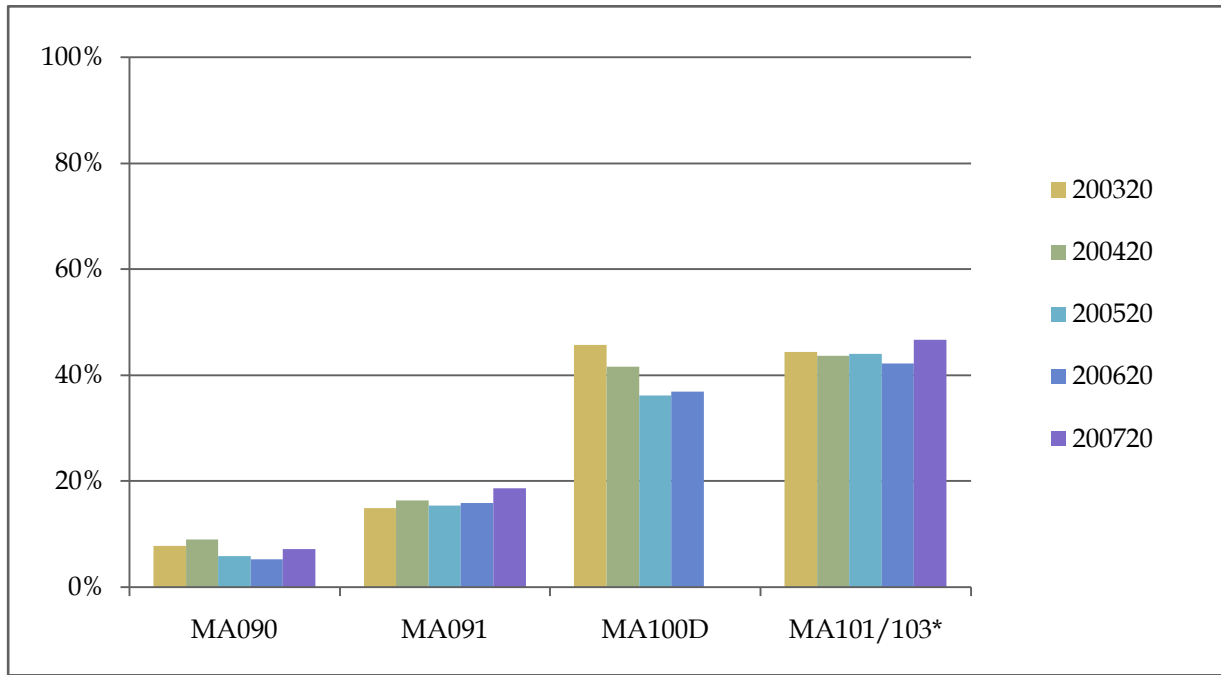


**Percentage of each of the last five fall cohorts passing threshold course within two years.**

\* Threshold: Language courses, "C" or better in EN101/A; Math courses, "D" or better in MA110 or higher.

**Percentage of Cohort Passing Threshold\* Course within Two Years**

	<b>200020</b>	<b>200120</b>	<b>200220</b>	<b>200320</b>	<b>200420</b>	<b>200520</b>	<b>200620</b>	<b>200720</b>
<b>MA090</b>	10%	8%	9%	8%	9%	6%	5%	7%
<b>MA091</b>	18%	17%	17%	15%	16%	15%	16%	19%
<b>MA100D</b>	49%	48%	42%	46%	42%	36%	37%	0%
<b>MA101/103*</b>	37%	35%	42%	44%	44%	44%	42%	47%



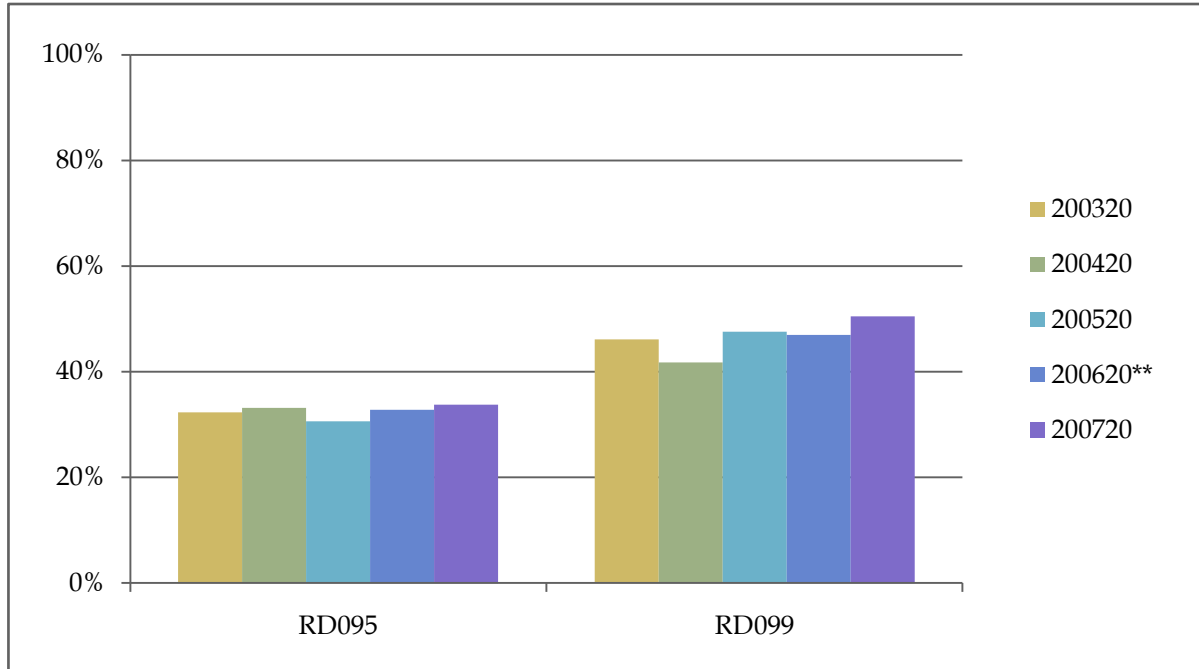
**Percentage of each of the last five fall cohorts passing threshold course within two years.**

\* Prior to fall 2006 (200720) these data refer to MA100.

\* Threshold: Language courses, "C" or better in EN101/A; Math courses, "D" or better in MA110 or higher.

**Percentage of Cohort Passing Threshold\* Course within Two Years**

	<b>200020</b>	<b>200120</b>	<b>200220</b>	<b>200320</b>	<b>200420</b>	<b>200520</b>	<b>200620**</b>	<b>200720</b>
<b>RD095</b>	16%	26%	29%	32%	33%	31%	33%	34%
<b>RD099</b>	40%	43%	47%	46%	42%	48%	47%	51%



**Percentage of each of the last five fall cohorts passing threshold course within two years.**

**\*\* In fall 2005 (200620) RD095, a 5 hour course, replaced RD089, a 3 hour course.**

\* Threshold: Language courses, "C" or better in EN101/A; Math courses, "D" or better in MA110 or higher.