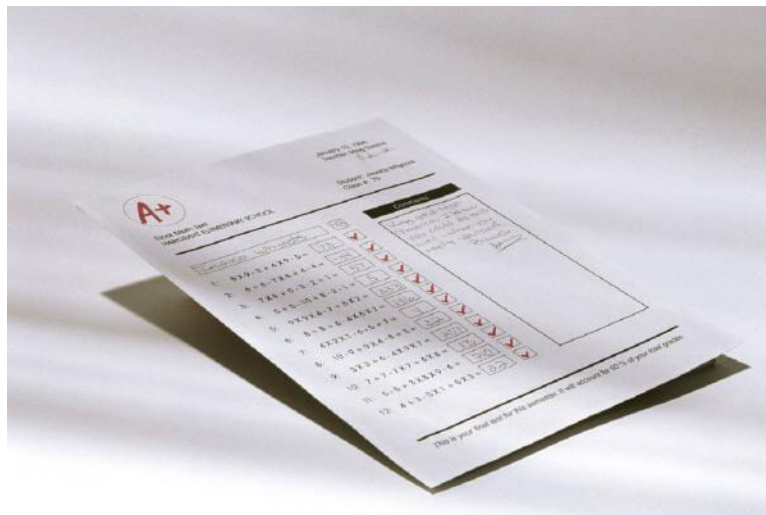


# MONTGOMERY COLLEGE

## Trustee Information Program

### Student Success - - GPA Fiscal 2003 to Fiscal 2007



**TRUSTEE INFORMATION PROGRAM**  
**Student Success: Grade Point Average**  
**Fiscal 2003 to Fiscal 2007**

**Executive Summary**

- In general, Montgomery College students have consistently performed in the B-/C+ range. Over the five most recent years of data, the Collegewide grade point average ranged from 2.62 to 2.70.
- Female students have consistently shown a higher level of success than their male counterparts. The academic success of female students is consistently above Collegewide performance, while the opposite is true for male students.
- Disparity in performance is noted by race. White students have consistently earned higher GPAs compared to all other student groups, followed by Asian students. And, the GPAs of these two groups have consistently been above the Collegewide average.
- The performance of Black and Hispanic students is consistently below the Collegewide average, as well as below the performance of White and Asian students.
- Faculty and staff continue to increase their efforts to insure student success, for example, First Year Experience, Learning Communities, implementation of intervention strategies for at risk students and academic support programs.

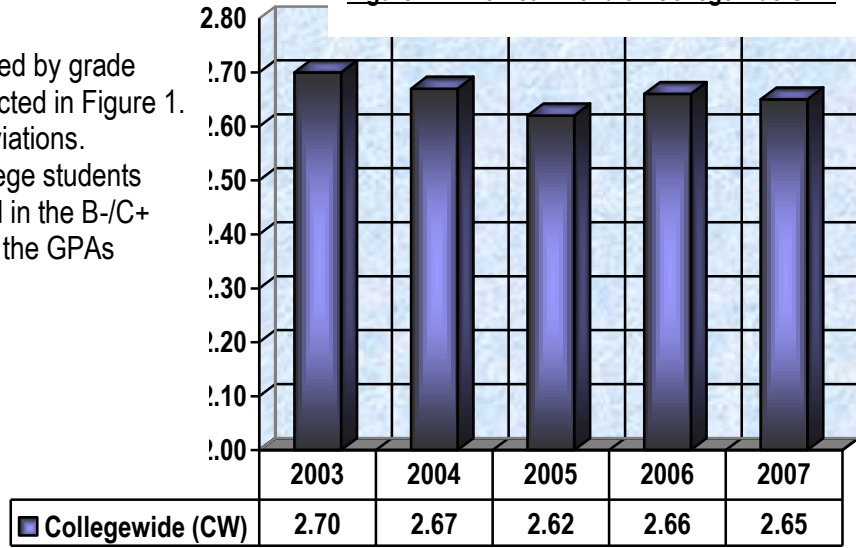
**Discussion**

The success of students is a priority at Montgomery College. The College is aware that both internal and external factors influence the success of students. Various academic strategies, programs and initiatives are employed that are intended to build students' confidence and academic skills. The identification and intervention of students in need of academic support at various academic levels and the administration of programs that are designed to support and provide assistance to students are just two examples of the efforts faculty and staff expend to enhance the educational experience of students. It is reasonable to suggest that student achievement as measured by the GPA is likely impacted by such efforts.

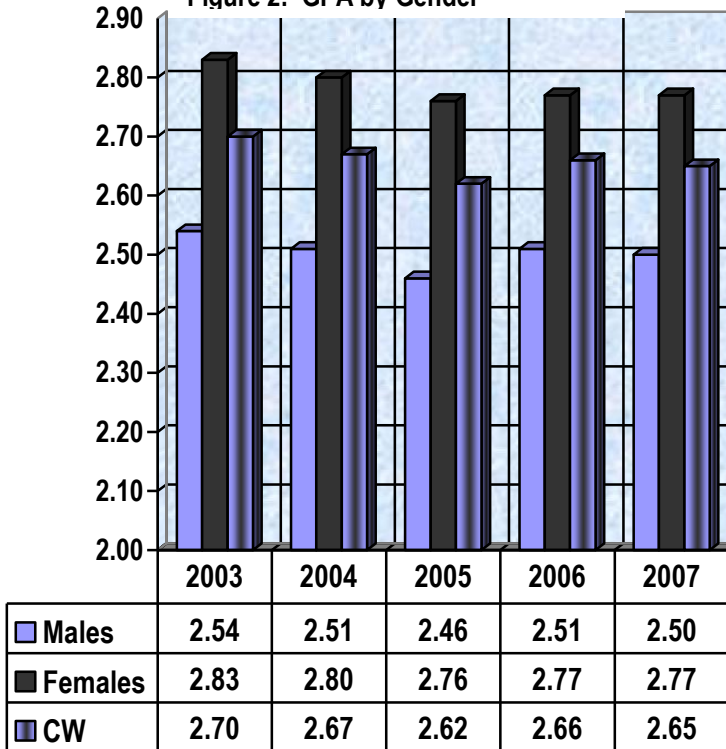
**TRUSTEE INFORMATION PROGRAM**  
**Student Success: Grade Point Average**  
**Fiscal 2003 to Fiscal 2007**

Student success as measured by grade point average (GPA) is depicted in Figure 1. This figure shows minor deviations. However, Montgomery College students have consistently performed in the B-/C+ range, which is indicative of the GPAs shown in Figure 1.

**Figure 1: Five Year Trend on Collegewide GPA**



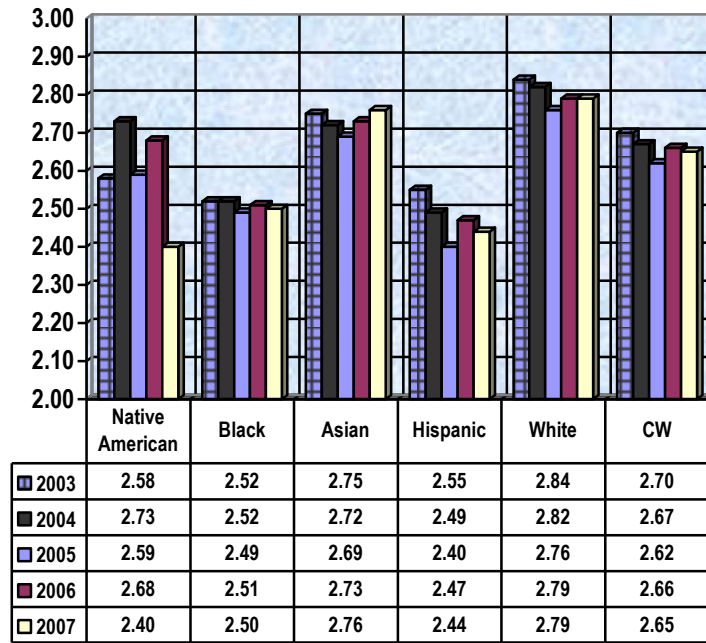
**Figure 2: GPA by Gender**



Clear differences in success emerge when performance by sex or gender is examined (Figure 2). Female students as a group continue to have a higher level of success than their male counterparts; and the degree of disparity in performance is consistent across the five years shown. In addition, the academic success of female students is consistently above Collegewide performance, while the opposite is true for male students.

Disparity in performance is noted by race. Over the five years shown in Figure 3, White students have consistently earned higher GPAs compared to all other student groups, followed by Asian students. The performance of these two groups has consistently been above the Collegewide average.

**Figure 3: GPA by Race**



In contrast, the performance of Black and Hispanic students is notably below the Collegewide average, as well as below the performance of White and Asian students. Only Asian students exhibited an increase in GPA this year. White students' GPA held steady, while Black and Hispanic students realized a slight decline in their average GPAs.

Table 1 provides a ten year history on the GPA by gender and by race as compared to Collegewide performance. Closer observation of the data in Figure 3 reveals that Black students have made the greatest amount of achievement gains over the ten year period compared to other student groups, as measured by the GPA.

**Table 1: Ten Year Trend on GPA**

	1998	1999	2000	2001	2002	2003	2004	2005	2006	2007
<b>Male</b>	2.41	2.46	2.44	2.46	2.51	2.54	2.51	2.46	2.51	2.50
<b>Female</b>	2.73	2.73	2.73	2.76	2.80	2.83	2.80	2.76	2.77	2.77
<b>CW</b>	2.59	2.61	2.60	2.63	2.67	2.70	2.67	2.62	2.66	2.65
<b>Native American</b>	2.57	2.60	2.56	2.67	2.49	2.58	2.73	2.59	2.68	2.40
<b>Black</b>	2.33	2.36	2.36	2.40	2.47	2.52	2.52	2.49	2.51	2.50
<b>Asian</b>	2.61	2.69	2.69	2.69	2.73	2.75	2.72	2.69	2.73	2.76
<b>Hispanic</b>	2.43	2.43	2.42	2.46	2.52	2.55	2.49	2.40	2.47	2.44
<b>White</b>	2.78	2.79	2.77	2.79	2.83	2.84	2.82	2.76	2.79	2.79