

Zoom Breakout Rooms for Small Group Discussions

SOHEILA EBRAHIMIAN, PH.D.
ACHIEVING THE PROMISE ACADEMY
EMBEDDED COACH
THE OFFICE OF ACADEMIC AFFAIRS
MONTGOMERY COLLEGE



Embedded coaches work closely with instructors to identify the particular needs of the students in each course and provide targeted support to students in a way that offers more individualized attention.

ACCT 221	ACCT 222	BIOL 150
CCJS 110	CHEM 131	CHEM 135
ENGL 102	MATH 117	MATH 120
MATH 165	MATH 181	MATH 182
PHYS 161	PSYC 102	ENES 102

The Role of ATPA Embedded Coaches

- ▶ **Embedded Coaches support students in their academic studies by:**
 - ▶ Reviewing and further explaining classroom instruction, homework, projects, labs, and exams
 - ▶ **Attending classes and helping students with group work**
 - ▶ Holding weekly study sessions outside of class
 - ▶ Providing faculty with updates on student progress
 - ▶ Connecting students to additional MC resources
 - ▶ Mentoring students

Student Engagement: A critical component of effective teaching and learning

Small Group settings

- ▶ Create a collaborative environment for more student engagement
- ▶ Increase student participation
- ▶ Create a sense of community
- ▶ Offer opportunity for peer interaction
- ▶ Offer opportunity for more personal attention to each student and their learning needs

Zoom Breakout Rooms

The screenshot displays a Zoom meeting window titled "Zoom Meeting". The interface is in a dark theme. At the top right, there are window control buttons and a "Speaker View" button. The main area is divided into three breakout room tiles. The top tile features a video feed of Soheila Ebrahimian, with a name tag "Soheila Ebrahimian" at the bottom. The background of this tile is a logo for "MIA RAPT" with a purple and yellow bird head. The text "Dr. E" is on the left and "Geraldine's iPad" is on the right. The bottom-left tile shows a video feed of Geraldine Papillero, with a name tag "Geraldine Papillero" at the bottom. The text "Soheila" is on the left and "ATPA Coach" is on the right. The bottom-right tile is empty. At the bottom, the Zoom control bar includes icons for Unmute, Stop Video, Security, Participants (6), Polls, Chat, Share Screen, Record, Breakout Rooms, Reactions, and More. A red "End" button is on the far right. The Windows taskbar is visible at the very bottom, showing the search bar and various application icons. The system tray on the right shows the time as 12:11 PM on 12/8/2020.



Profile

Meetings

Webinars

Recordings

Settings

Account Profile

Reports

Attend Live Training

Video Tutorials

Knowledge Base

My Meetings > Manage "Zoom Break Out "

Start this Meeting

Topic Zoom Break Out

Time Dec 8, 2020 12:00 PM Eastern Time (US and Canada)

Add to Google Calendar Outlook Calendar (.ics) Yahoo Calendar

Meeting ID 946 9711 4171

Security Passcode ***** Show Waiting Room

Invite Link https://montgomerycollege.zoom.us/j/94697114171?pwd=TW5WL3FhZExUNWc1eXBZU2tXSGZ4UT09 Copy Invitation

Video Host Off

Participant Off

Audio Telephone and Computer Audio





- Security
- Schedule Meeting
- In Meeting (Basic)
- In Meeting (Advanced)**
- Email Notification
- Other

In Meeting (Advanced)

Report to Zoom

Allow users to report meeting participants for inappropriate behavior to Zoom's Trust and Safety team for review. This setting can be found on the meeting information panel.



Breakout room

Allow host to split meeting participants into separate, smaller rooms



Modified Reset

Allow host to assign participants to breakout rooms when scheduling

Remote support

Allow meeting host to provide 1:1 remote support to another participant



Closed captioning

Allow host to type closed captions or assign a participant/third party device to add closed captions



Save Captions

Allow participants to save fully closed captions or transcripts



Dr. E



Soheila Ebrahimian

Geraldine's iPad

Soheila



Geraldine Papillero

ATPA Coach

Unmute Stop Video Security Participants 6 Polls Chat Share Screen Record Breakout Rooms Reactions More

The 'Breakout Rooms' button is highlighted with a yellow double-headed arrow pointing downwards.

End

Dr. E

Geraldine's iPad

Create Breakout Rooms

Assign 5 participants into 2 Rooms:

Automatically Manually

2-3 participants per room

Create Rooms

Soheila Ebrahimian

Soheila

ATPA Coach



Geraldine Papillero

Dr. E

Geraldine's iPad


Soheila

ATPA Coach

Breakout Rooms - Not Started

- ▼ Breakout Room 1 3
 - Dr. E
 - Geraldine Papillero
 - Geraldine's iPad
- ▼ Breakout Room 2 2
 - ATPA Coach
 - Soheila

Recreate ▾ Options ▾ Add a Room **Open All Rooms**



Dr. E

Geraldine's iPad

Breakout Rooms - Not Started

- ▼ Breakout Room 1 3
 - Dr. E
 - Geraldine Papillero
 - Geraldine's iPad
- ▼ Breakout Room 2 2
 - ATPA Coach
 - Soheila

- Move all participants into breakout rooms automatically
- Allow participants to return to the main session at any time ←
- Breakout rooms close automatically after: minutes ←
- Notify me when the time is up
- Countdown after closing breakout room
 - Set countdown timer: seconds ←

Soheila

ATPA Coach

Recreate ▼ Options ▼ Add a Room **Open All Rooms**

Geraldine Papillero

Breakout Room 2

Speaker View

Exit Full Screen

Exit full screen

Press Esc to exit full screen



Unmute

ATPA Coach

Soheila

Unmute

Start Video

Participants 3

Chat

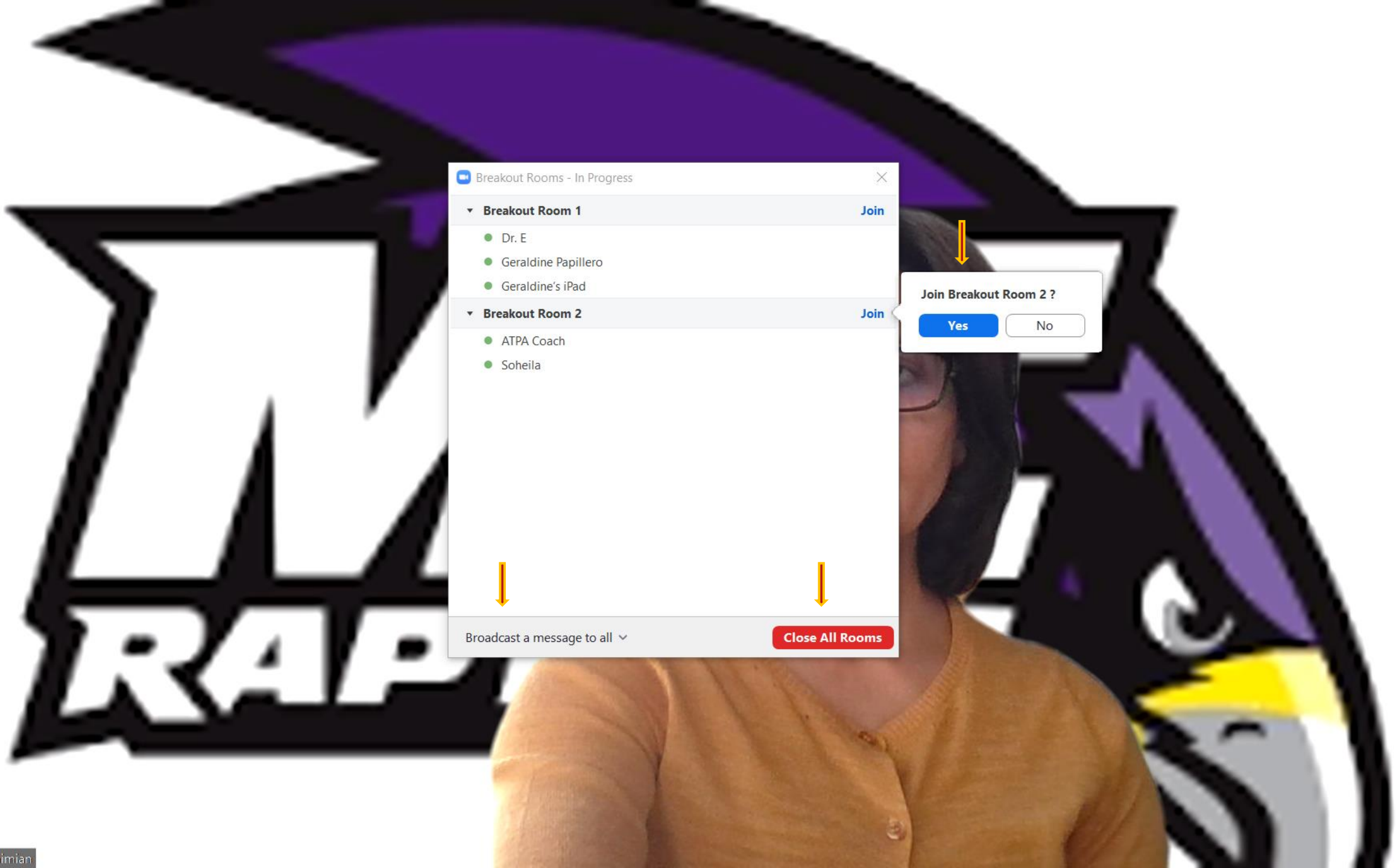
Share Screen

Record

Ask for Help

Reactions

Leave Room



Breakout Rooms - In Progress

▼ Breakout Room 1 [Join](#)

- Dr. E
- Geraldine Papillero
- Geraldine's iPad

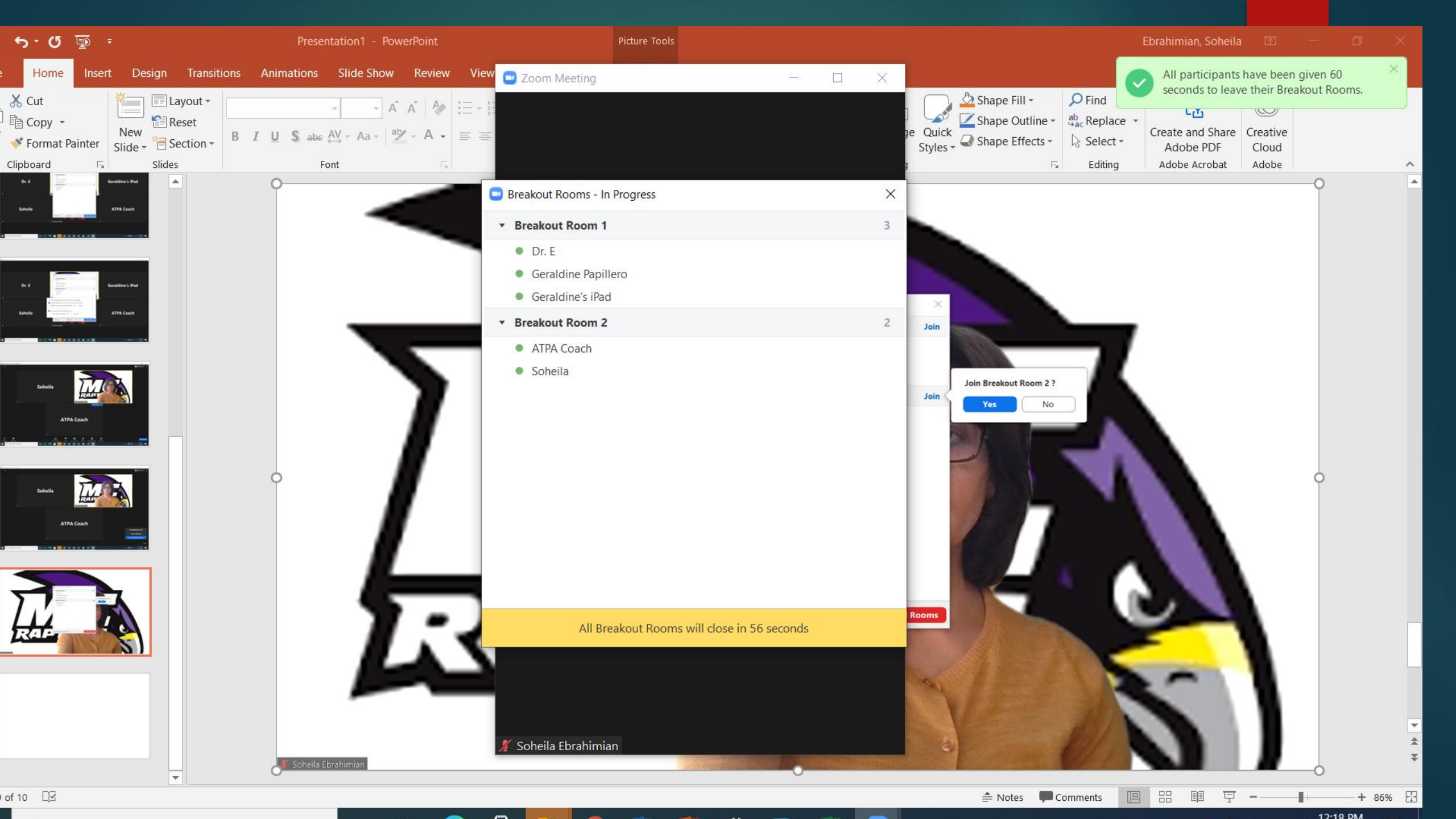
▼ Breakout Room 2 [Join](#)

- ATPA Coach
- Soheila

Broadcast a message to all ▼ [Close All Rooms](#)

Join Breakout Room 2 ?

[Yes](#) [No](#)



Clipboard

Cut Copy Format Painter

Layout Reset Section

Font

B I U S abc AV - Aa - A

Shape Fill Shape Outline Shape Effects

Find Replace Select

Create and Share Adobe PDF Adobe Acrobat

Creative Cloud Adobe

All participants have been given 60 seconds to leave their Breakout Rooms.

Zoom Meeting

Breakout Rooms - In Progress

- Breakout Room 1** 3
 - Dr. E
 - Geraldine Papillero
 - Geraldine's iPad
- Breakout Room 2** 2
 - ATPA Coach
 - Soheila

All Breakout Rooms will close in 56 seconds

Soheila Ebrahimian

Join

Join Breakout Room 2?

Yes No

Rooms

Dr. E

Breakout Rooms - Not Started

- Breakout Room 1** 3
 - Dr. E
 - Geraldine Papillero
 - Geraldine's iPad
- Breakout Room 2** 2
 - ATPA Coach
 - Soheila

Assign 5 participants into Rooms:

Automatically Manually

2-3 participants per room

[Recreate All Rooms](#)

Recreate Options [Add a Room](#) [Open All Rooms](#)



Geraldine Papillero

Geraldine's iPad

ATPA Coach

Co-Hosts and Recording

- ▶ Another participant, such as a co-instructor or a coach who needs to visit break out rooms must be assigned as a “Co-Host”
- ▶ A co-host cannot manage breakout rooms
- ▶ Zoom will only record the main room, regardless of what room the meeting host is in
- ▶ Multiple participants can record locally

Recommendations

- ▶ Build in plenty of time
- ▶ Break down complex and long activities into different sessions
- ▶ At the end of each breakout session, invite students to return to the main room to reflect on the completed task, then recreate the rooms to continue with the next part
- ▶ Provide clear instructions before sending students to breakout rooms
- ▶ Provide a specific document to be shared, containing instructions, objectives, and questions that students must work on
- ▶ Ensure that each student is assigned a role (leader, notetaker,...)
- ▶ Encourage students to turn on their cameras and unmute their microphones
- ▶ Plan to visit each room and engage with each student
- ▶ Be available in the main room to respond to “Ask for Help” requests

Questions and Comments

Soheila Ebrahimian, Ph.D.

Achieving the Promise Academy, Embedded Coach

[Email: soheila.Ebrahimian@montgomerycollege.edu](mailto:soheila.Ebrahimian@montgomerycollege.edu)

Call: 240-678-7844