

MONTGOMERY COLLEGE
Office of Information Technology – WD&CE InTech¹ Team
Date: February 8, 2006

MEMORANDUM

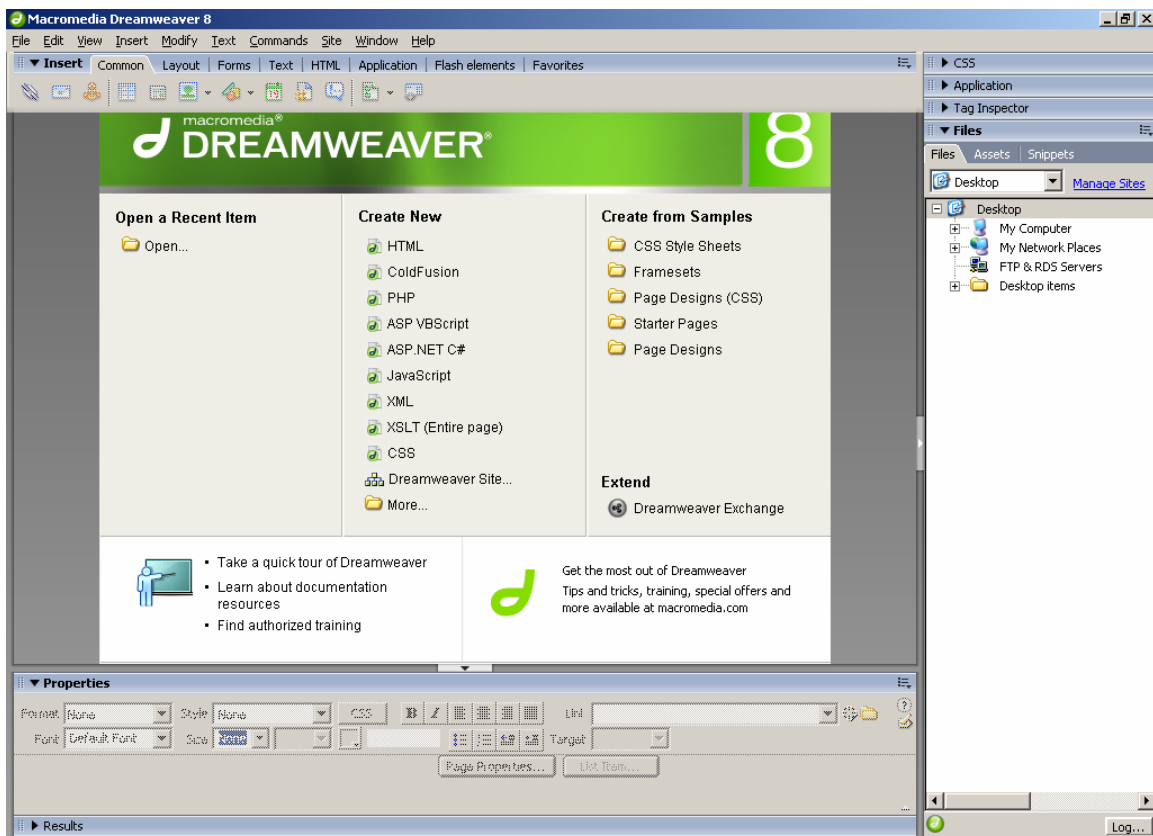
To: WDCE InTech Team

From: Ray Kimball, Project Manager, TechLEAP/WebLEAP

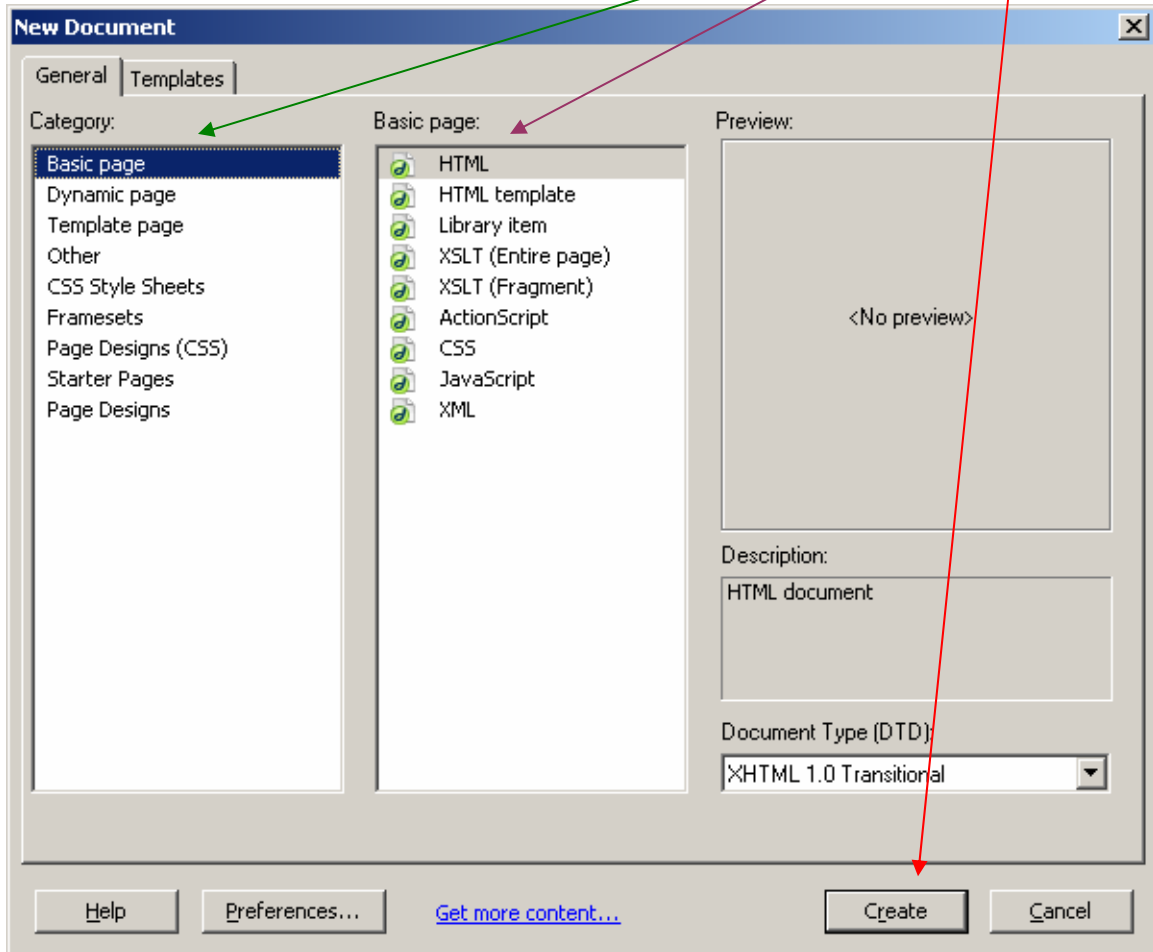
Subject: How to tweak Studio 8 Dreamweaver for WDCE classrooms

Step by Step Tweaking Instructions

First screen will look like this.

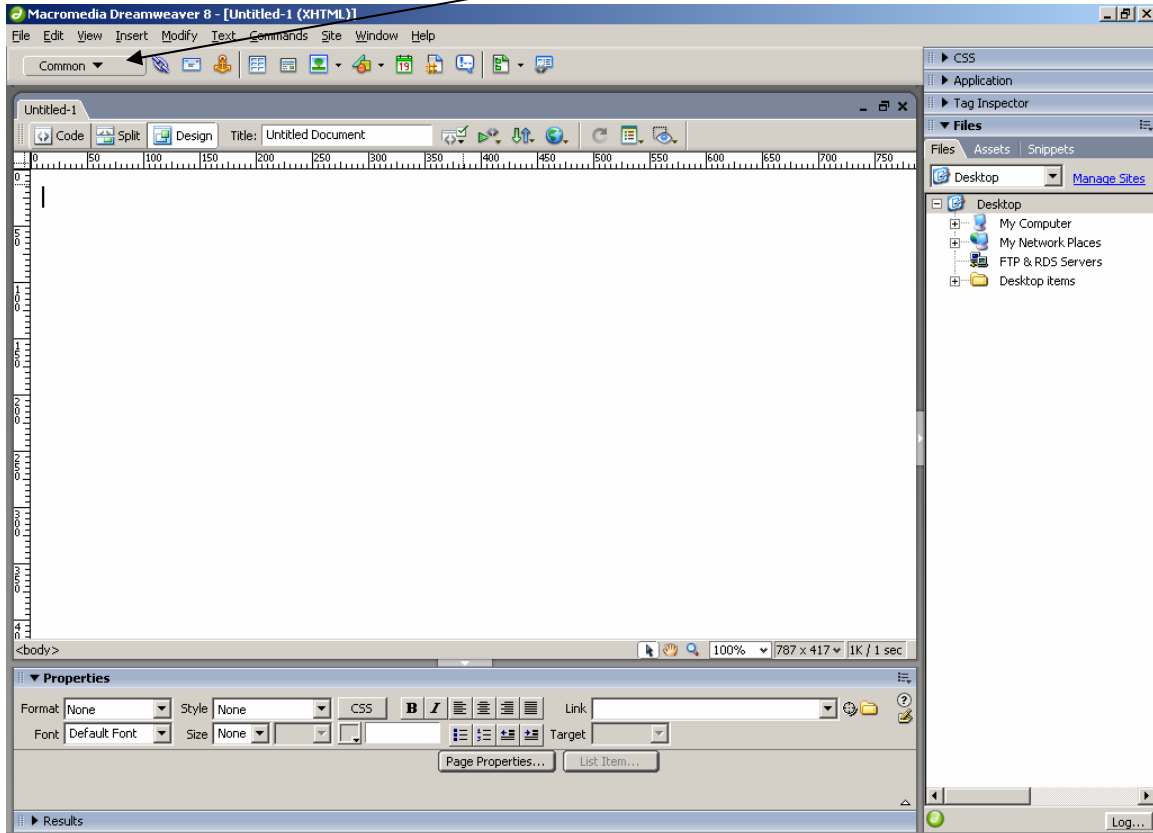


First Step: To activate the screen, select File>New>Basic Page>HTML Document to get a new document on the screen/ Hit “Create” to create the new document.



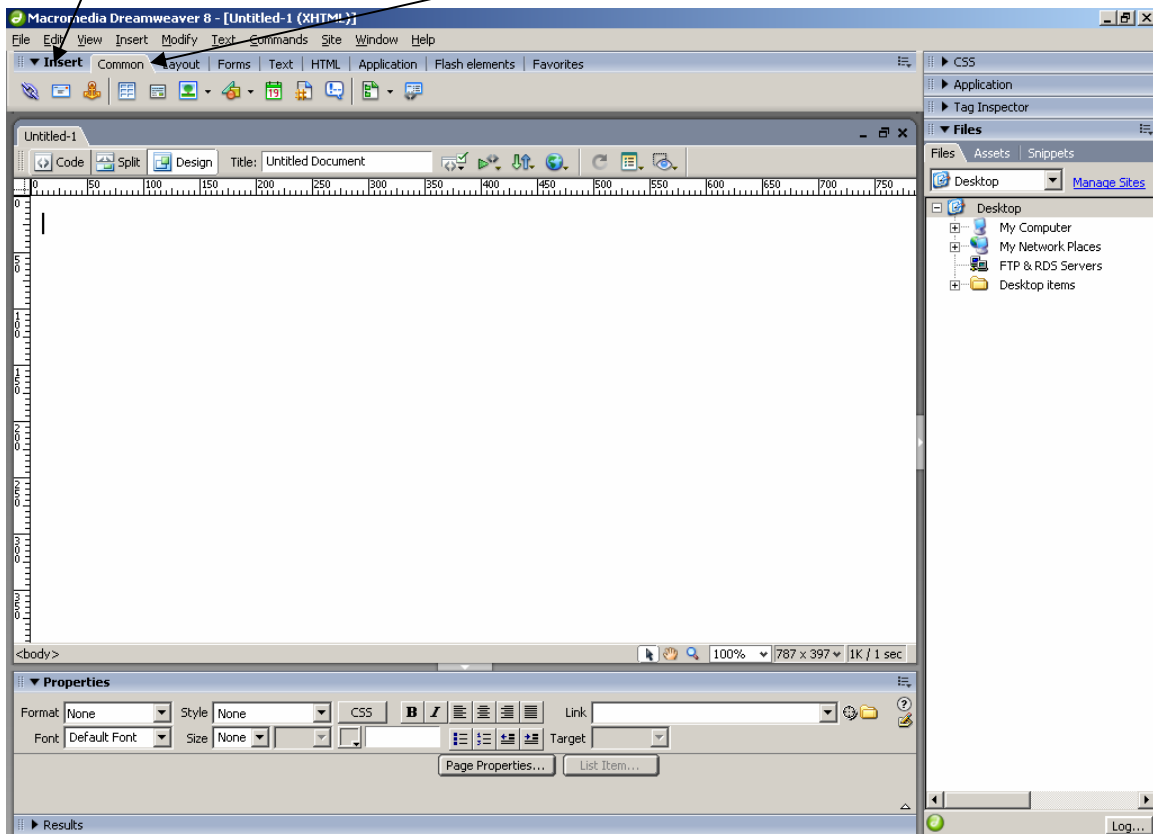
MONTGOMERY COLLEGE
Office of Information Technology – WD&CE InTech¹ Team
Date: February 8, 2006

Original Screen – Toolbars – Looks like this. We will change the look of this screen by modifying the Insert Toolbar (Common tab):

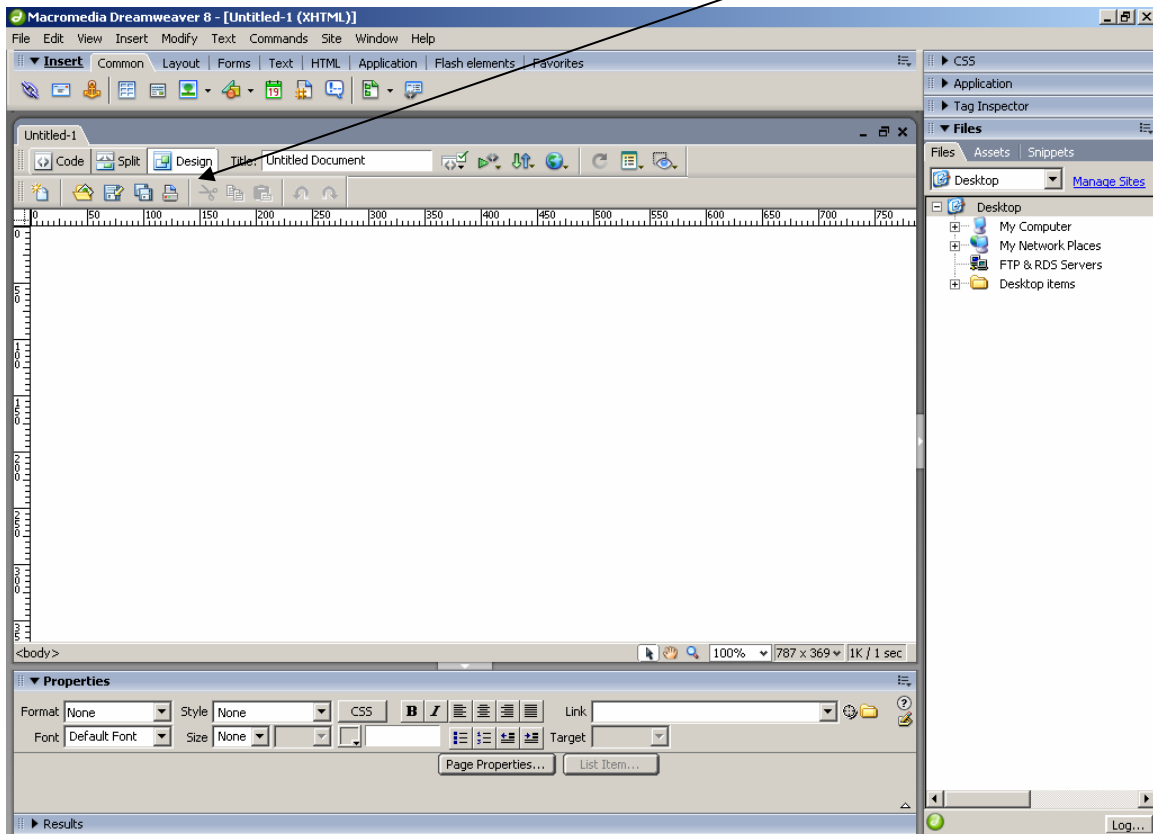


MONTGOMERY COLLEGE
Office of Information Technology – WD&CE InTech¹ Team
Date: February 8, 2006

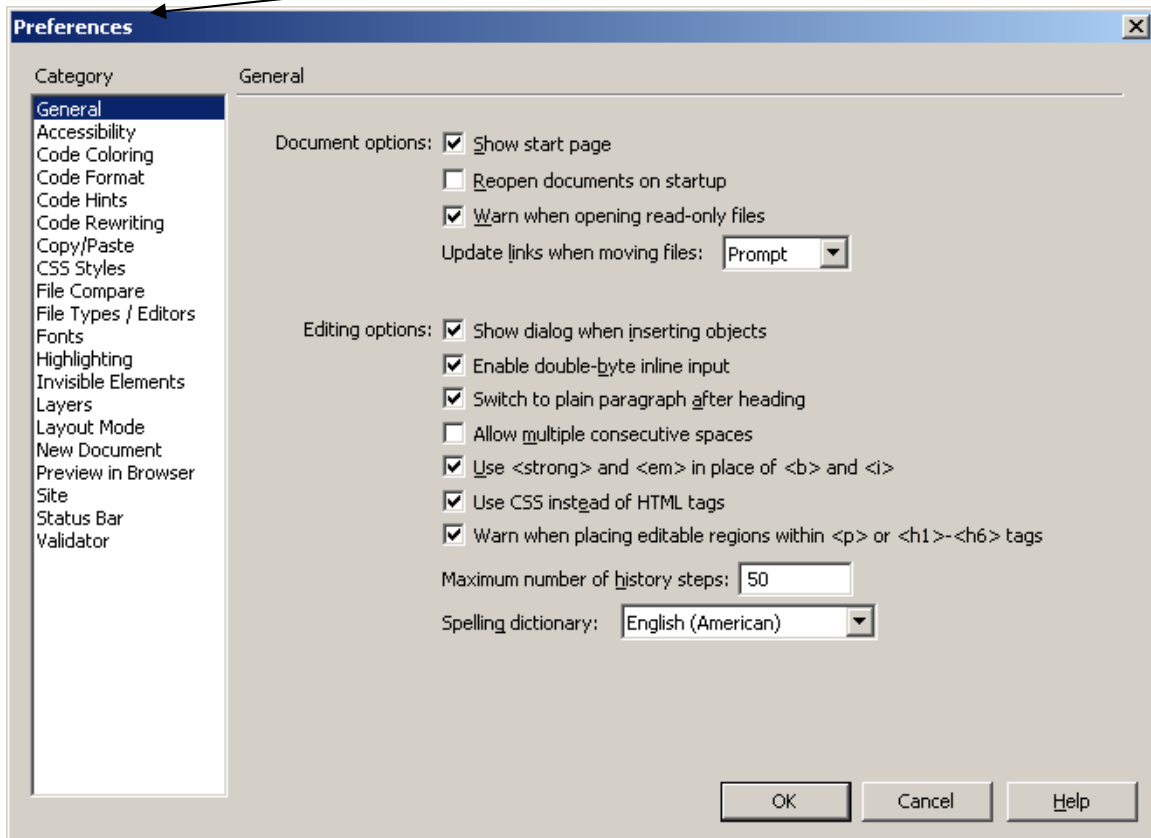
1. Modify the Insert Toolbar (“Common tab”) as follows –
 - a. Select Drop-down arrow on Common Toolbar
 - b. Select “Show As Tabs” at bottom of Drop-down menu
 - c. Toolbar should then look like this:



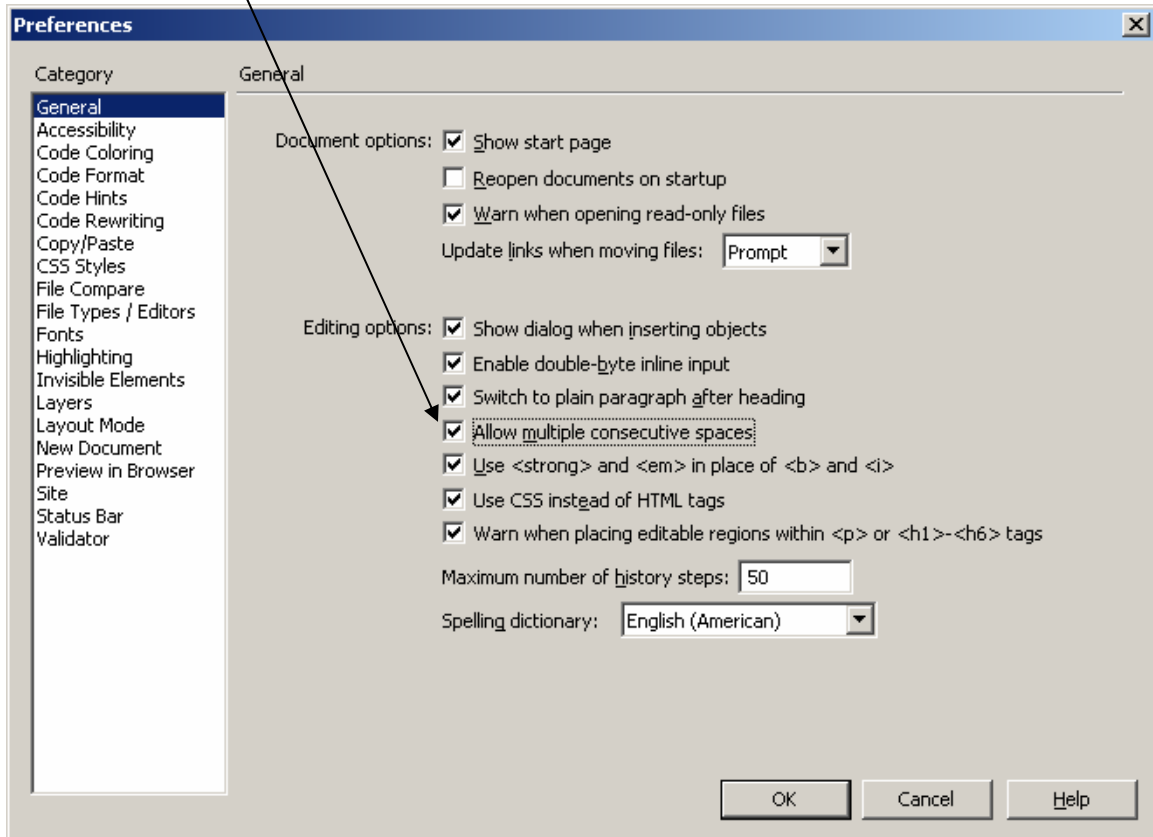
2. Add Standard Toolbar (Standard Toolbar is Not Set Up on Dreamweaver's Default Image. Surprising, but true....)
 - a. Select View > Toolbars > Select "Standard"
 - b. Standard Toolbar contains standard GUI icons: "New Document," "Open," "Save," "Save All," "Cut," "Copy" and "Paste," and "Undo/Redo." See bottom toolbar on the new screenshot below.
 - c. Toolbars at top will then include Standard Toolbar. Image will look like this:



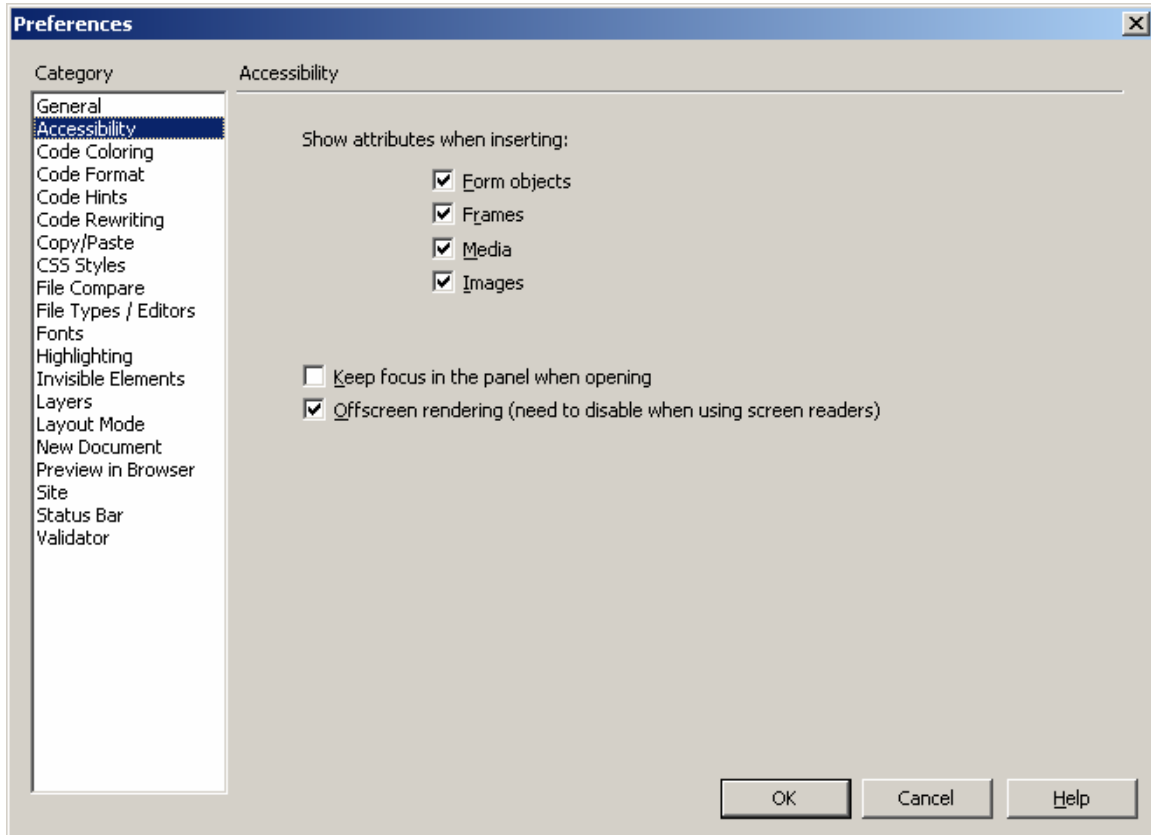
3. Changes to Preferences – There are a number of changes that have to be made to the Preferences. We will make all these changes by selecting Edit>Preferences. We will then show screen shots for each of the changes made
 - a. When you open Edit>Preferences, the Edit>Preferences Dialog Box will look like this. We will be making changes in a number of these categories in the Preferences Dialog Box.



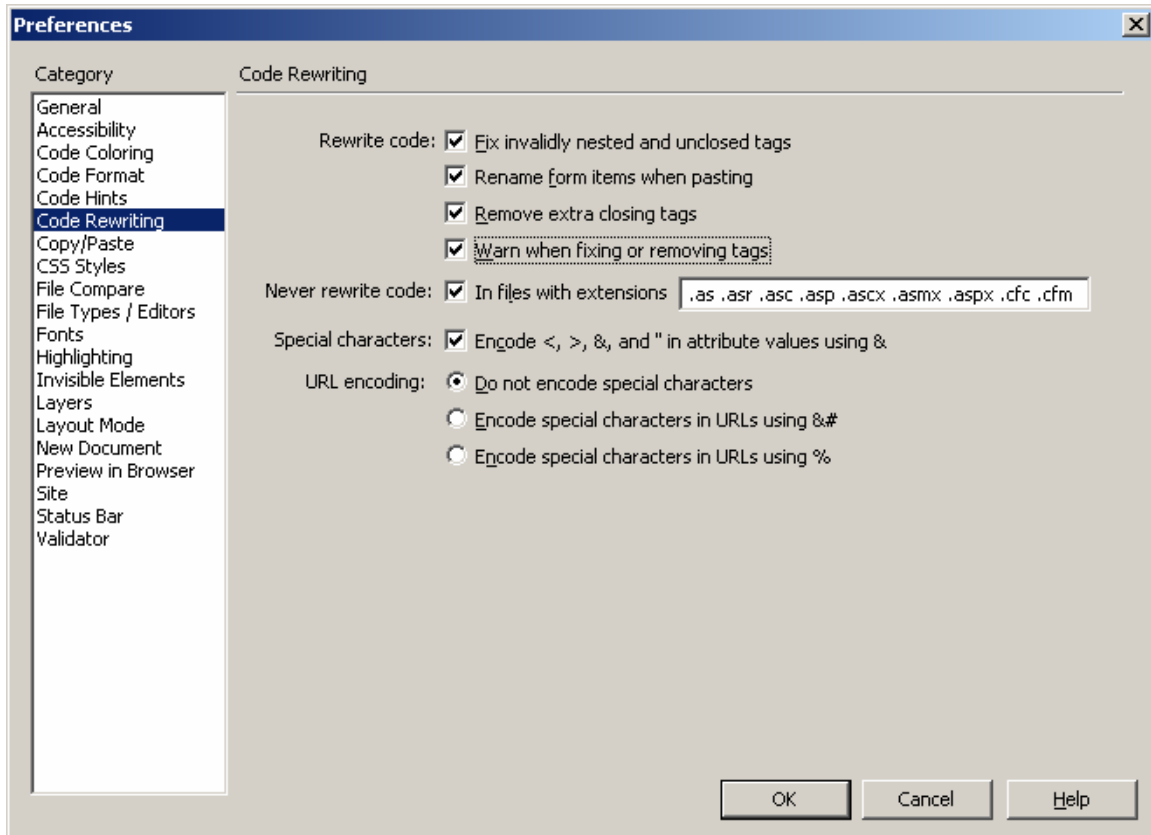
4. b. – Edit>Preferences>General. Select and Activate “Allow Multiple Consecutive Spaces.”



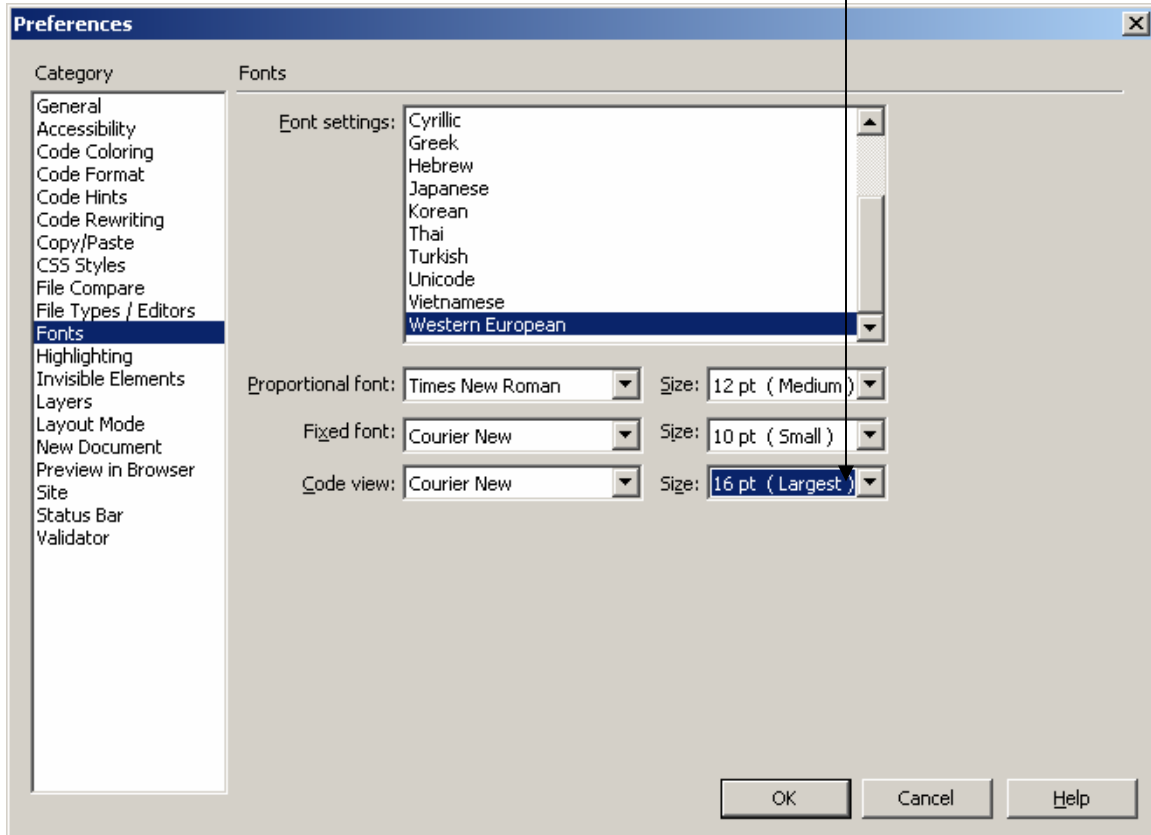
5. Make Sure Preferences>Accessibility looks like this:



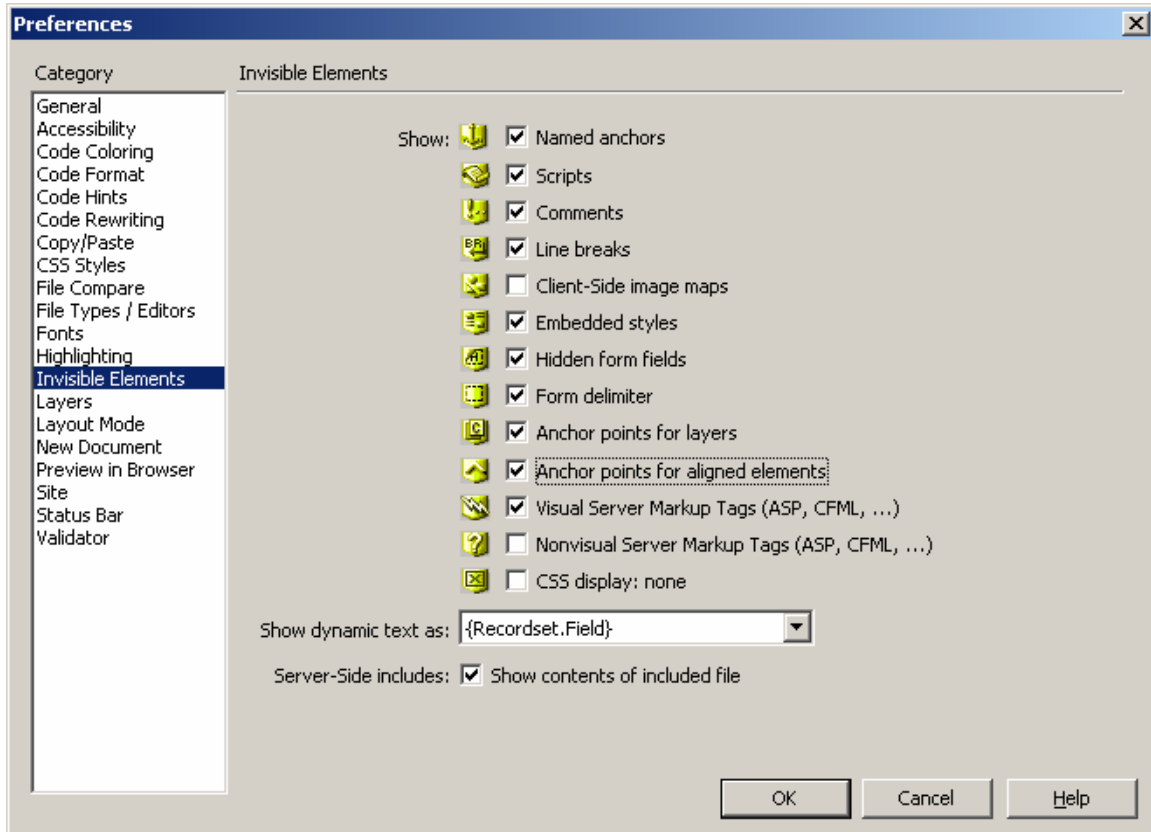
6. Edit>Preferences>Code Rewriting
 - a. Select & Activate “Fix invalidly nested and unclosed tags”
 - b. Select & Activate “Remove Extra Closing Tags.”
 - c. Select & Activate “Warn when fixing or removing tags.”
 - d. Screen should then look like this:



7. Edit>Preferences>Fonts
 - a. Change Code View: font to Courier 16pt (Largest). This is good for teaching purposes using the overhead projection & screen.



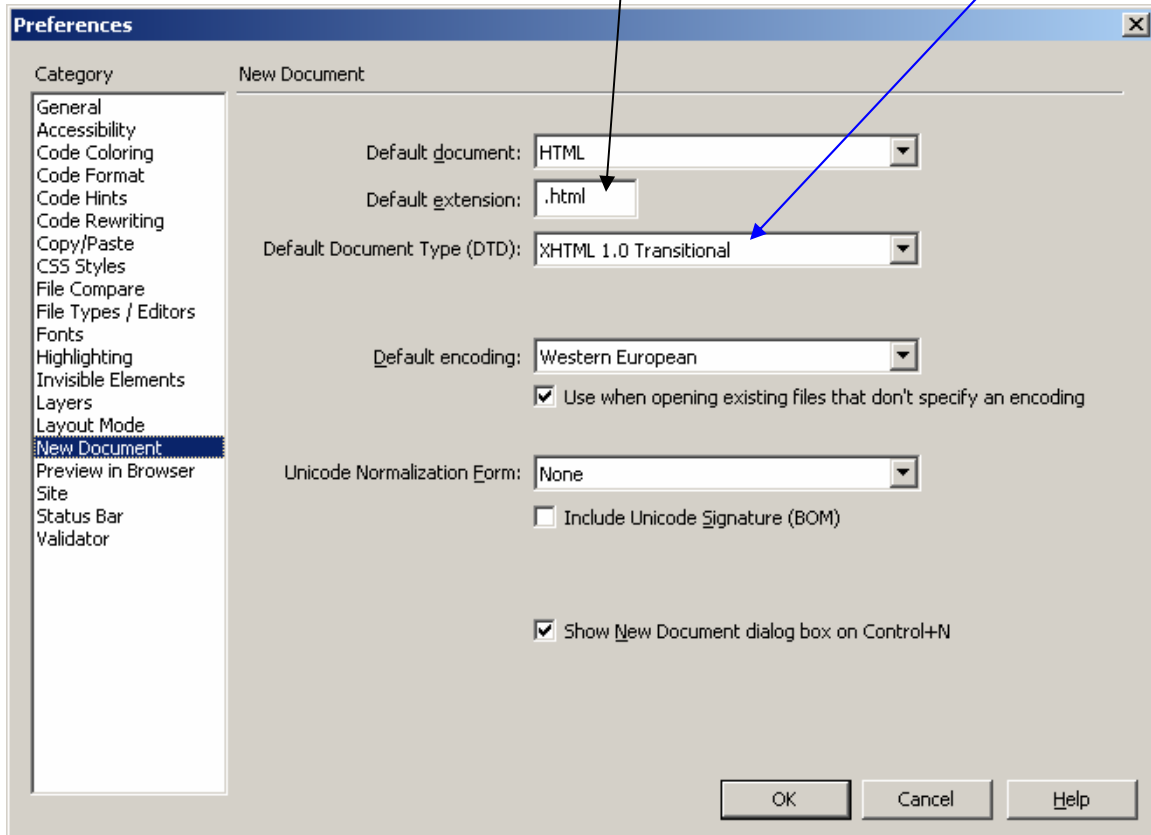
8. Edit>Preferences>Invisible Elements
 - a. Select and Activate the following additional checkboxes:
 - i. Scripts
 - ii. Comments
 - iii. Line Breaks
 - iv. Anchor Points for Layers
 - v. Anchor Points for Aligned Elements.
 - b. Dialog Box will then look like this:



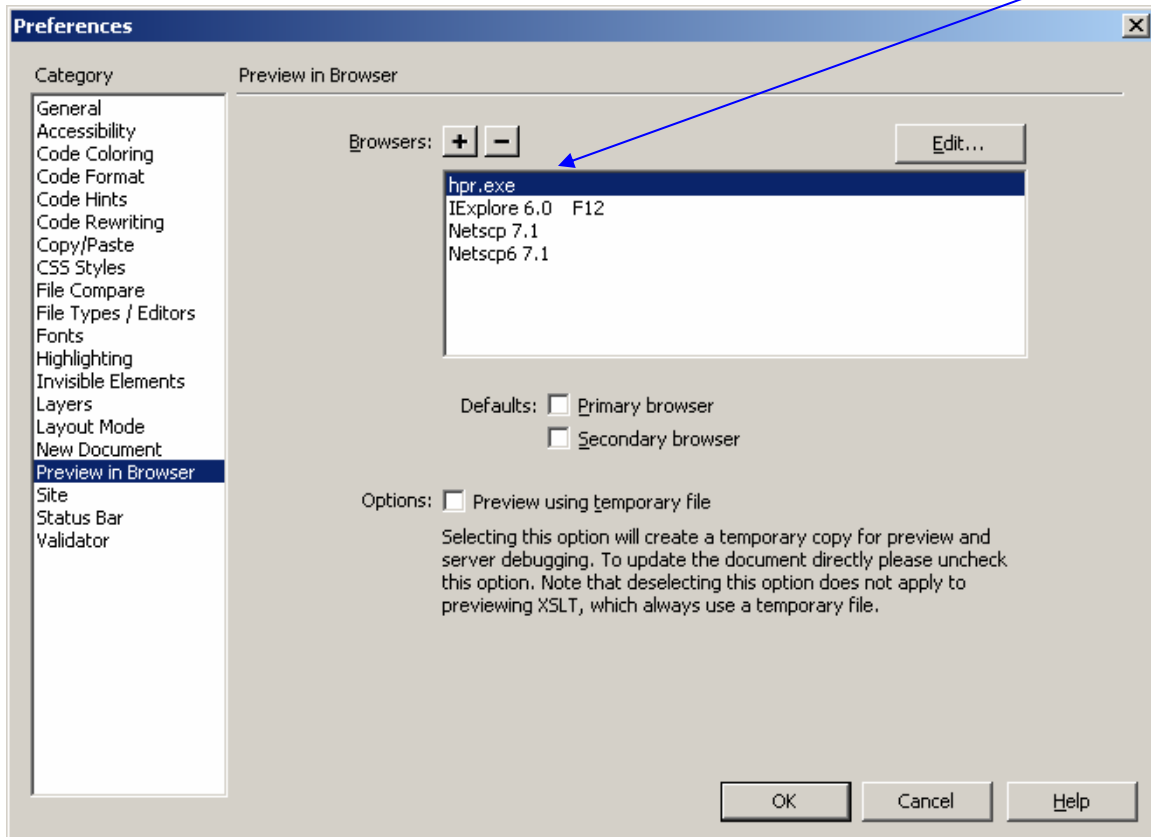
9. Edit>Preferences>New Document

a. Make the following changes if necessary:

- i. Default Extension - .html
- ii. Default Document Type (DTD) – XHTML 1.0 Transitional
- iii. Dialog Box should look like this:



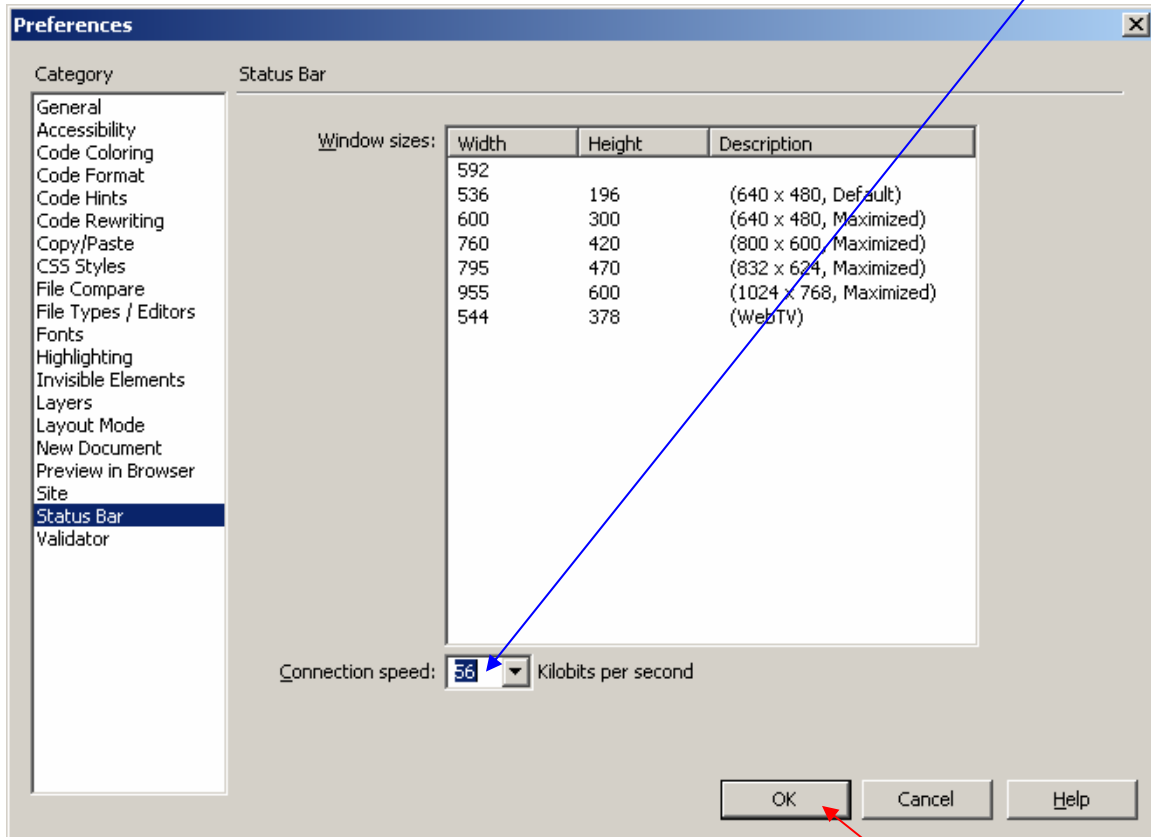
10. Edit>Preferences>Preview in Browser.
- a. Add the IBM Home Page Reader (HPR) browser to the list by doing the following:
 - i. Hit the Plus Sign for “Add Browser.”
 - ii. Use the Browse Button
 - iii. Go to Program Files > IBM > select hpr.exe
 - iv. Hit Open – (add to list).
 - v. Do not make this the primary or secondary browser – just an additional browser. Resulting Dialog Box should look like this:



11. b. Repeat above process in 10 a. and add Program Files> Mozilla>**firefox.exe** as an additional browser. (Screen shot not shown.)

Edit>Preferences>Status Bar

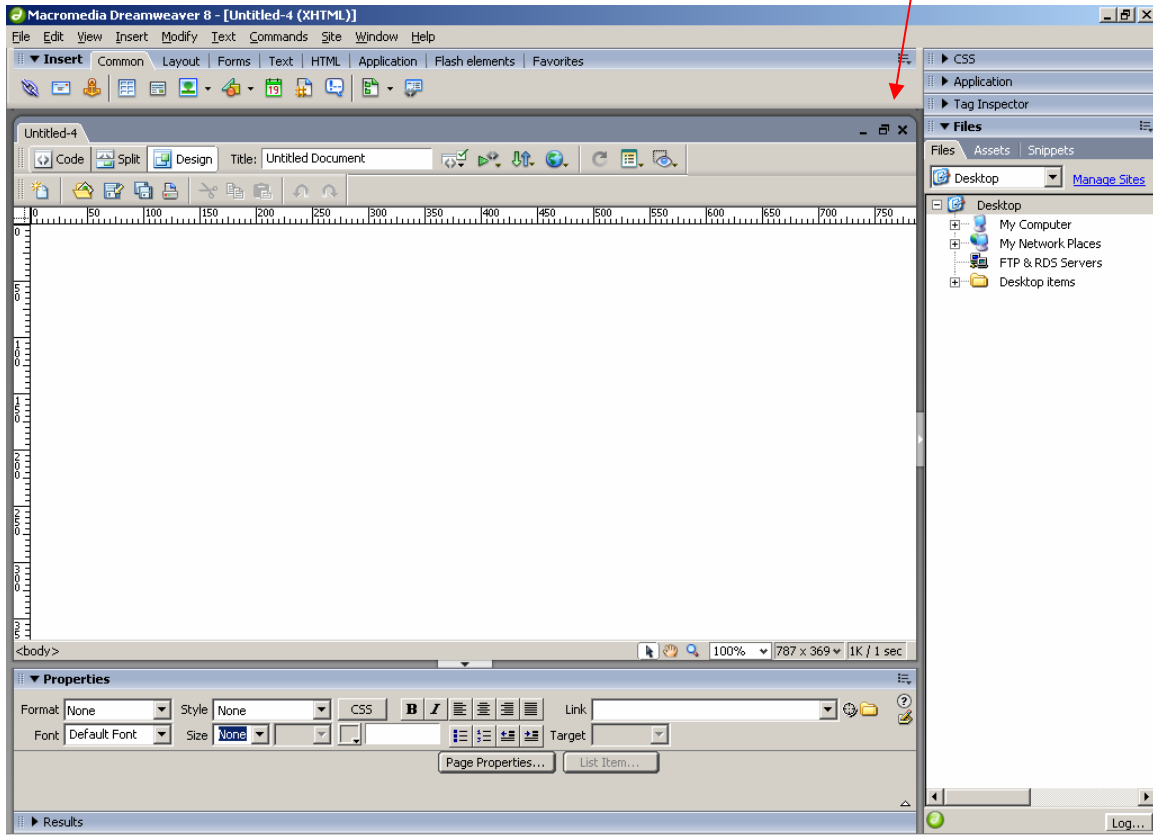
- a. Change Connection Speed: from 28.8 kpbs to 56 kpbs. See below.



After making all these changes in the Preferences Dialog Box, hit "OK" to implement all changes.

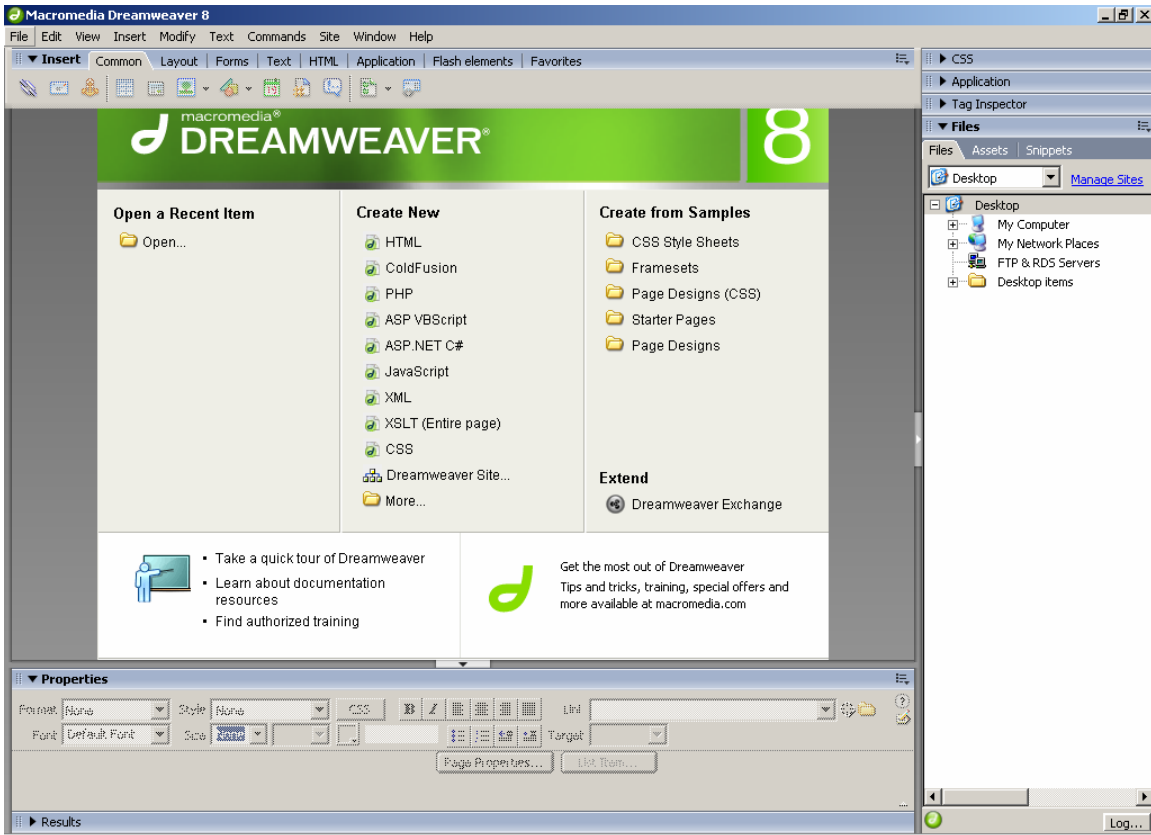
MONTGOMERY COLLEGE
Office of Information Technology – WD&CE InTech¹ Team
Date: February 8, 2006

Return screen to its original view by closing the New Document – x:



MONTGOMERY COLLEGE
Office of Information Technology – WD&CE InTech¹ Team
Date: February 8, 2006

The final screen should look like this:



MONTGOMERY COLLEGE
Office of Information Technology – WD&CE InTech¹ Team
Date: February 8, 2006

However, when you open a New Document – File>New>Basic Page>HTML, you should now see all toolbars, including the Standard Toolbar, like this:

Main Menu | Insert Toolbar in Tabs Mode | Document Toolbar | Standard Toolbar

