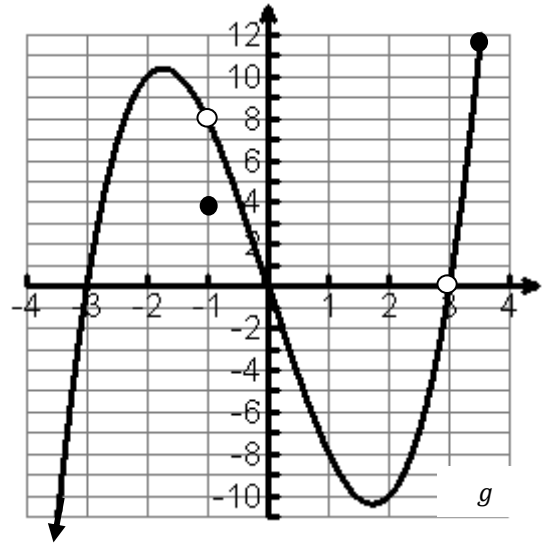
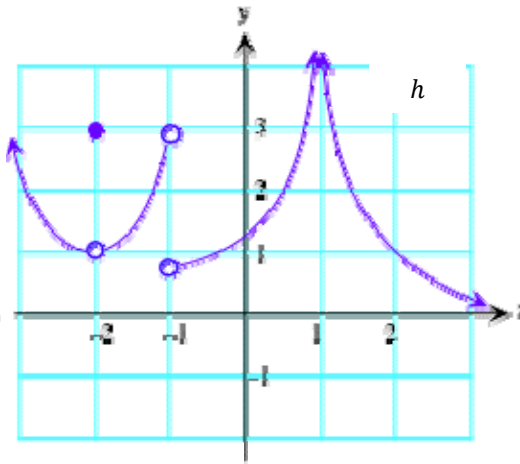
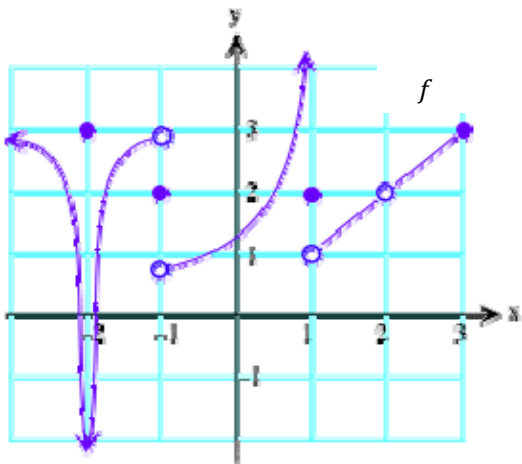


1. Use the graph of the function g to answer parts a – e.
Use appropriate mathematical notation.



- a. State the domain of g . (4 points)
- b. Find $g(-1)$. (1 points)
- c. For what value(s) of x does $g(x) = 0$? (2 point)
- d. For what value(s) of x does $g(x) = 11$? (1 points)
- e. For what values of x is $g(x) \leq 0$? (4 points)

2. Use the graphs of the functions f and h to answer the following.



Domain of f :

Domain of h :

Find $f(-1) =$

Find $h(-1) =$

Find $f(1) =$

Find $h(1) =$

Find $f(2) =$

Find $h(2) =$