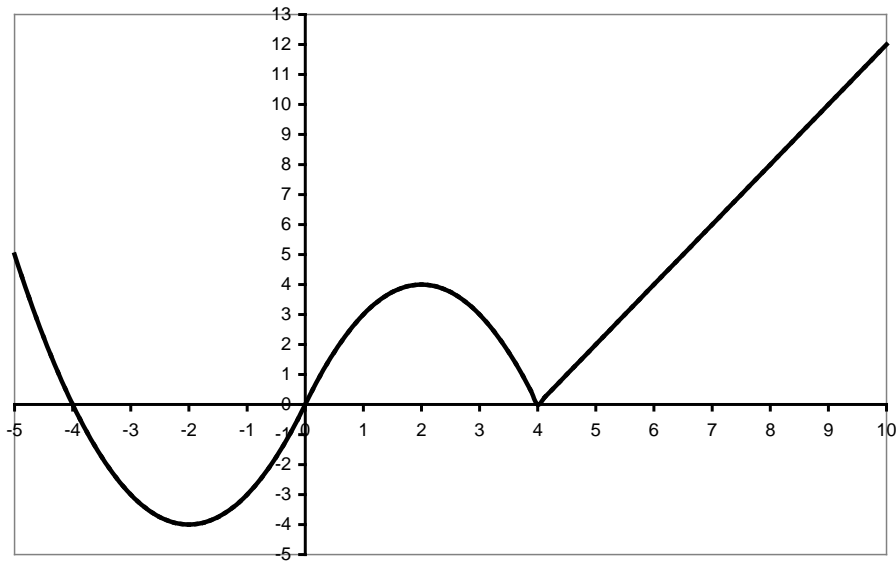


Name _____

The graph below is the graph of a function g . Assume that g is defined for all real numbers from $(-\infty, \infty)$, answer the following questions about g' .



1. On what interval(s) is the graph of $g' < 0$?
2. (Estimate) the value(s) of x between -5 and 4 (that is, $\{x \mid -5 < x < 4\}$) for which $g'(x) = 0$.
3. Explain why $g'(4)$ does not exist.
4. Which is larger $g'(1)$ or $g'(1.5)$? Explain.