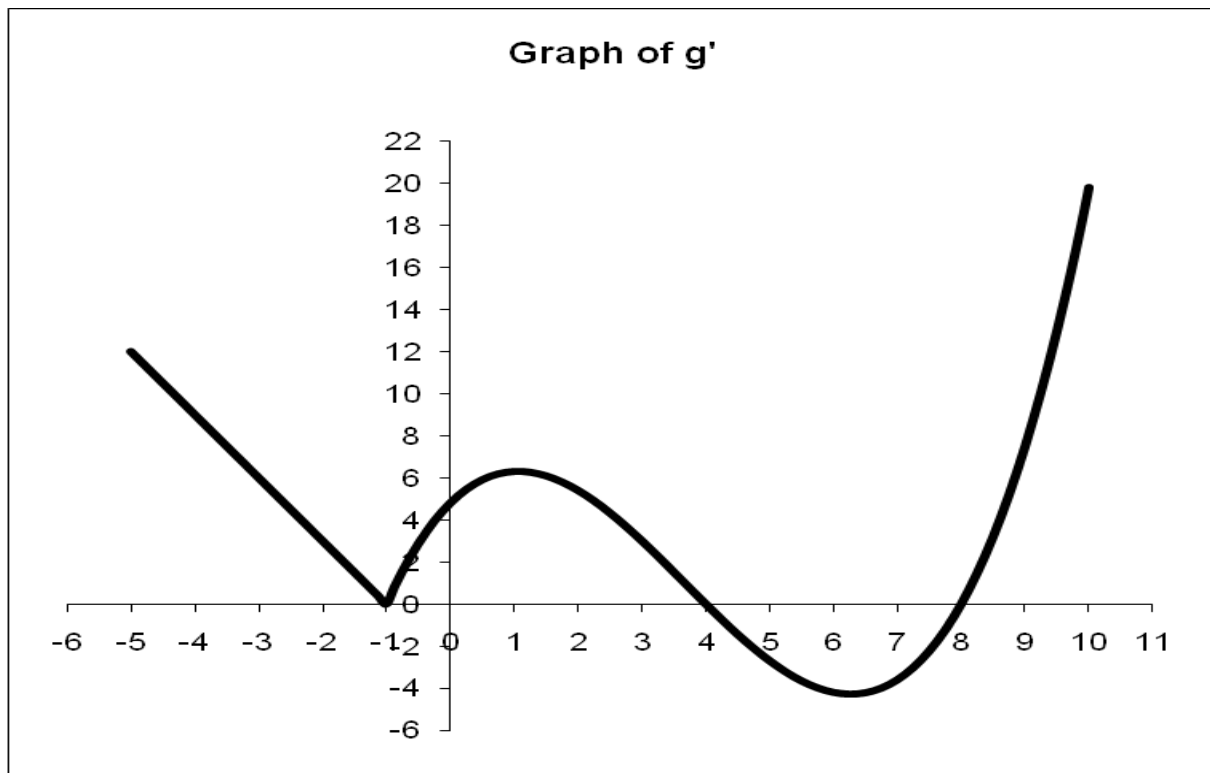


MA 181 WORKSHEET SECTION 2.8 D

NAME \_\_\_\_\_



The graph above is the graph of  $g'$ , the derivative of some function  $g$ . Assume that  $g$  and  $g'$  are defined for all real numbers. Answer the following questions about  $g$ .

1. On what interval(s) is the graph of  $g$  increasing?
2. On what interval(s) is the graph of  $g$  decreasing?
3. At what value(s) of  $x$  does  $g$  have a local minimum?
4. At what value(s) of  $x$  does  $g$  have a local maximum?