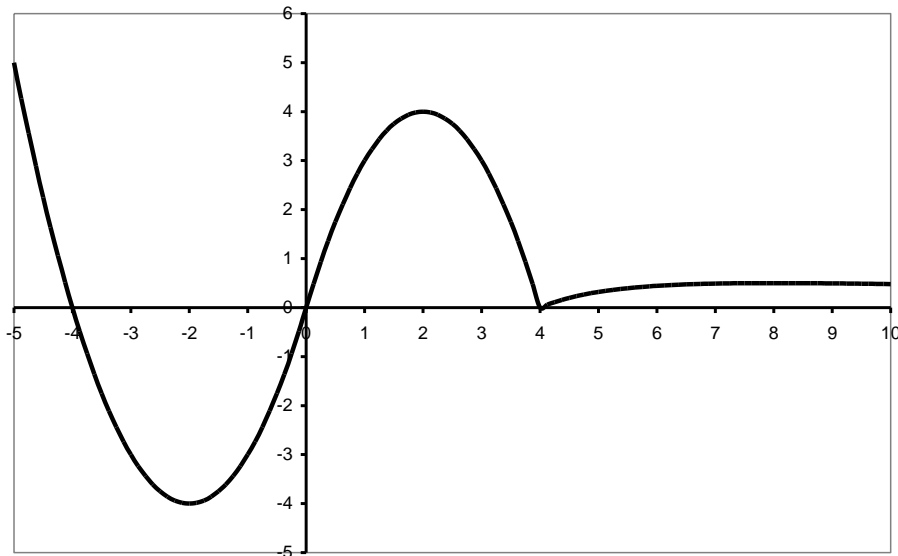


181 WORKSHEET (4.3) C

NAME _____



The graph above is the graph of g' , the **derivative** of a function g . Note that the graph of g is not shown. If the function g is defined for all x , use the graph to answer the following questions.

1. List the critical numbers of g .
2. On what interval(s) is the function g increasing?
3. At what value(s) of x , if any, does g have a local maximum?
4. List the hypercritical numbers of g (*remember these occur where $g'' = 0$ or g'' is undefined. Hint: There are 3.*)
5. On what interval(s) is the function g concave upward?
6. At what value(s) of x does g have an inflection point?