

TYPOGRAPHY II

ALL COURSES OFFERED IN SAFE, FULLY REMOTE OR DISTANCE LEARNING MODES

Builds upon the basic knowledge and experience gained in GDES 220. Students will further their awareness of the expressive nature of type with an emphasis toward developing their own personal typographic style. Students will create work in a variety of formats emphasizing originality. Typography in motion will be introduced.

Course offerings for the Spring 2021 semester are in 15 week modes for students to choose from.

Professor: MCSWAIN
CRN: 30275 W 1/27 - 5/16
9 - 2:40 PM FULL

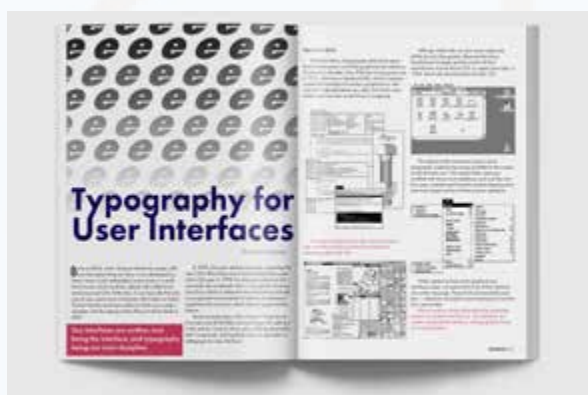
Student Work



Student work by White, I



Student work by Crater, K



Student work by Mathew Thomas, A

POSTER DESIGN BY GRAPHIC DESIGN AFA STUDENT ALWIN MATHEW THOMAS