

ACCESSING VIRTUAL MACHINES AT RACKTOP

Attention!

The usernames and passwords correspond to each VM below:

Virtual Machines	Username	Password
Kali 2019.4	kali	kali
Ubuntu 18.04	mcstudent	mcstudent
Windows 10 Pro	mcstudent	Montgomery!
Windows Server 2016	administrator	Montgomery!

Navigate to <https://mycloud.myracktop.com>

Enter the Organization name = MC



Welcome to
VMware Cloud Director

Use your organization name to continue

MC

NEXT

Login with your MC credentials.

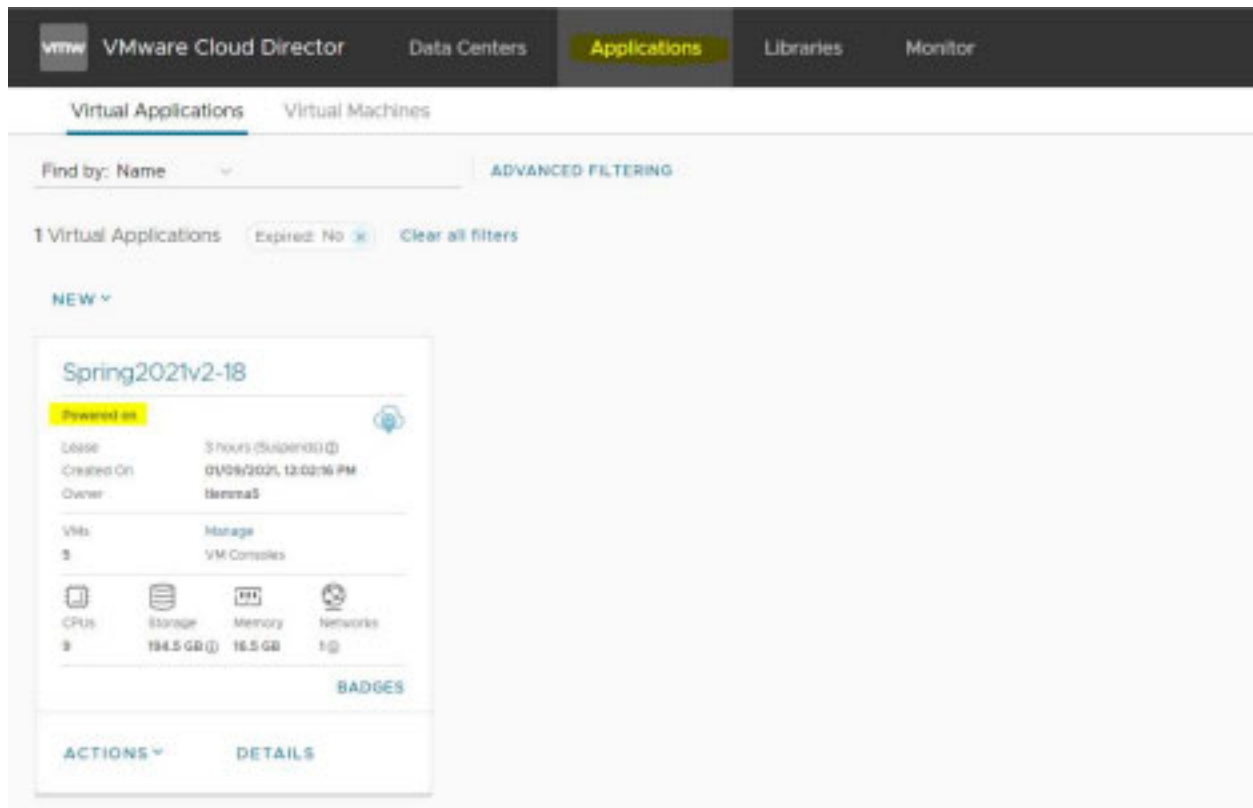
Example Student:

Username: Your MYMC Login ID

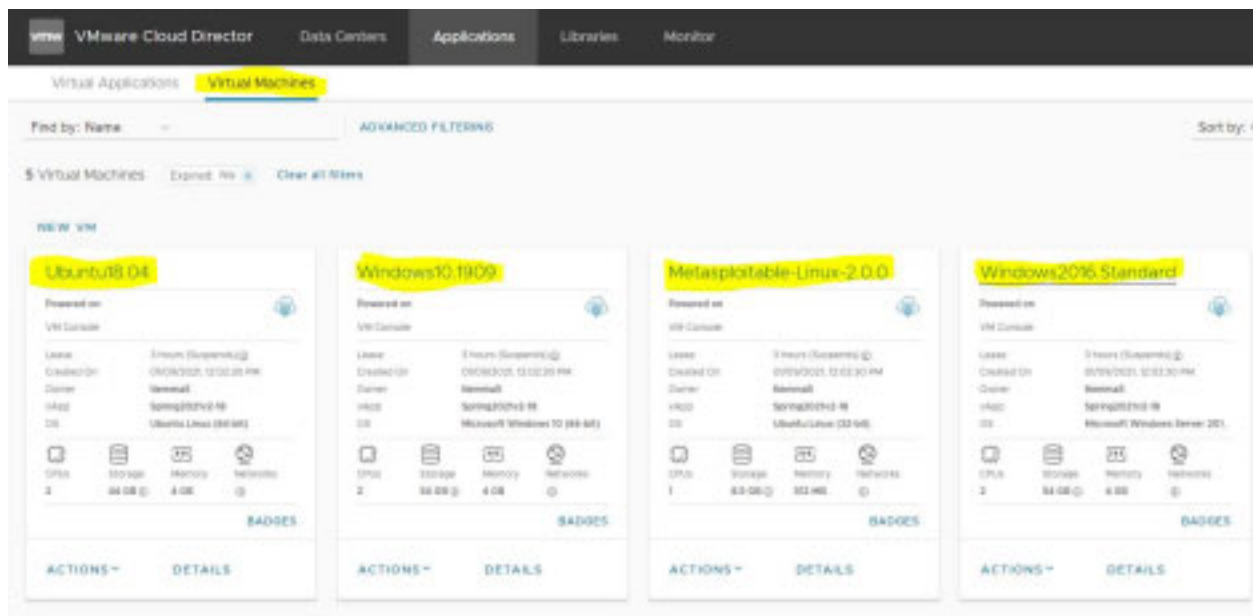
Password: provided in your email

** Your individual username and password will be provided to you via email. They should be sent to your montgomerycollege.edu student email accounts.

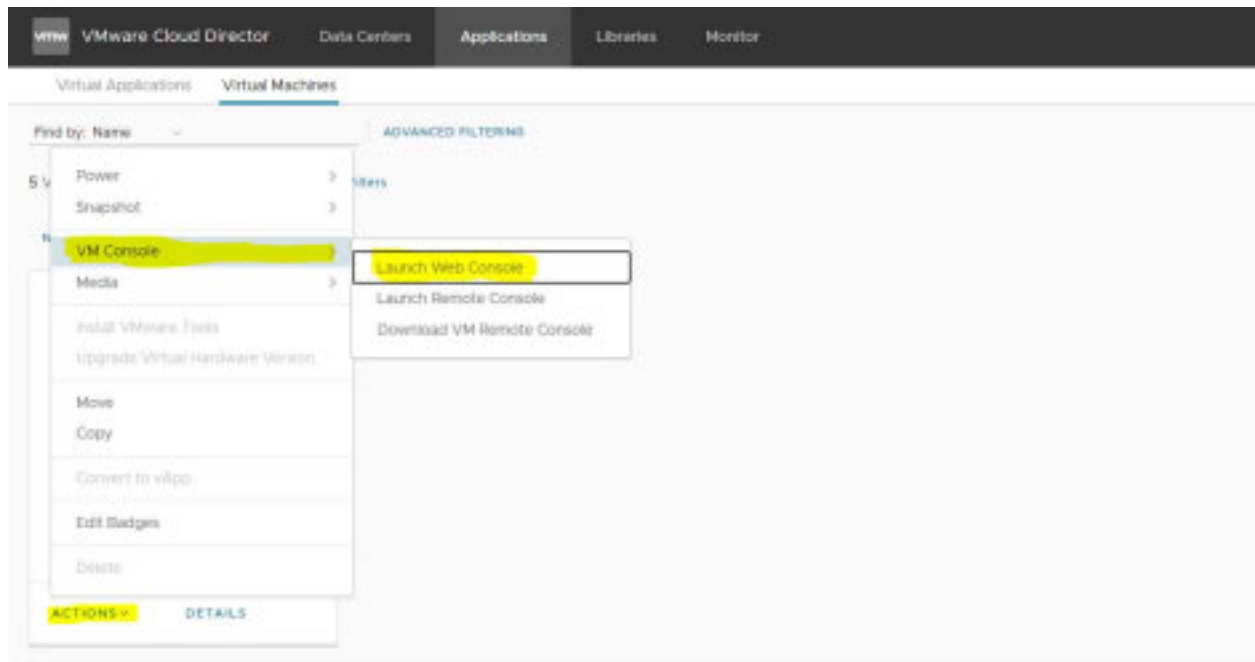
Go to the Application (Highlighted in Yellow). Here you can power on/off all the VM's at once.



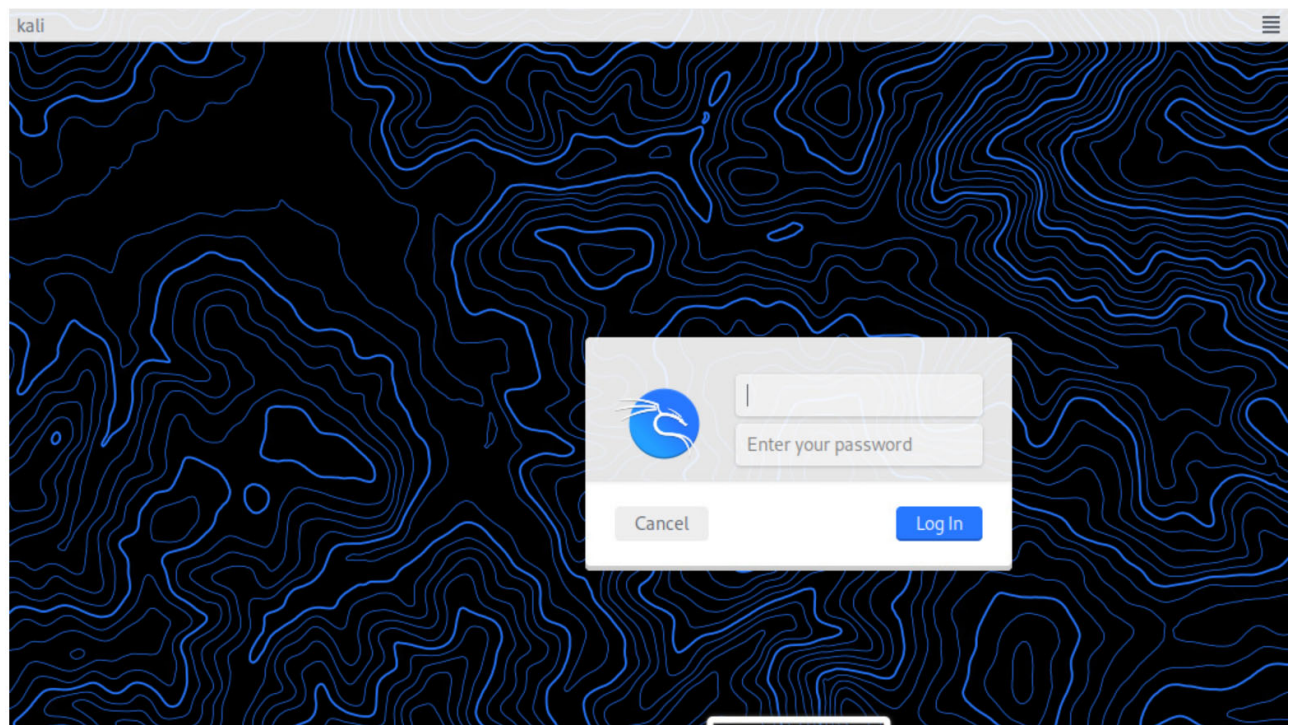
Go to the Virtual Machines tab. Here you will see all 5 VM's assigned to you. Click on any of the VM's and your console window will open. At this point, you will have access to the OS.



Next Click the ACTIONS drop down menu to display the monitors and access your OS. Follow through the highlighted steps.



This is what you will see on the following steps.



Note: For Windows, activation is NOT necessary for users to login and use. If you see a message, you can just close the window and it will let you login.

Usage NOTE:

The VMs are persistent and will keep the changes made.

However, we recommend that you save your work because there is no guarantee that the VMs will save your changes.

The virtual machines will automatically power off after 4 hours.

- Warning, if you do not save your work or reach a stopping point, the VMs are likely to suspend/power off at the 4-hour mark, and this MIGHT interrupt your work.
- If so, shutdown and power on your VM again anytime to reset the 4-hour countdown on your VM.
- To reduce resource consumption, please help us by shutting down the machines after you are done, after you have recorded and finished your work.
- If possible, you can turn on only the VMs you need for your project. Instead of turning on the entire vApp, turn on only the machine(s) you will be working on. (Otherwise just turn the whole vApp on and you can shut down any unused VMs if necessary.)

Thanks for your cooperation and consideration!

Frequently Asked Questions (FAQ)

All VM's have Internet access with their original configurations.

I can't ping either of the Windows machines!

Solution: If you have trouble pinging a windows machine, please be sure to turn off windows (defender) firewall OR search for instructions on google to allow File and Printer Sharing (Echo Request – ICMPv4-In) on each windows machine.

My Racktop is not taking the Racktop password, Spring2020! I can't log into my

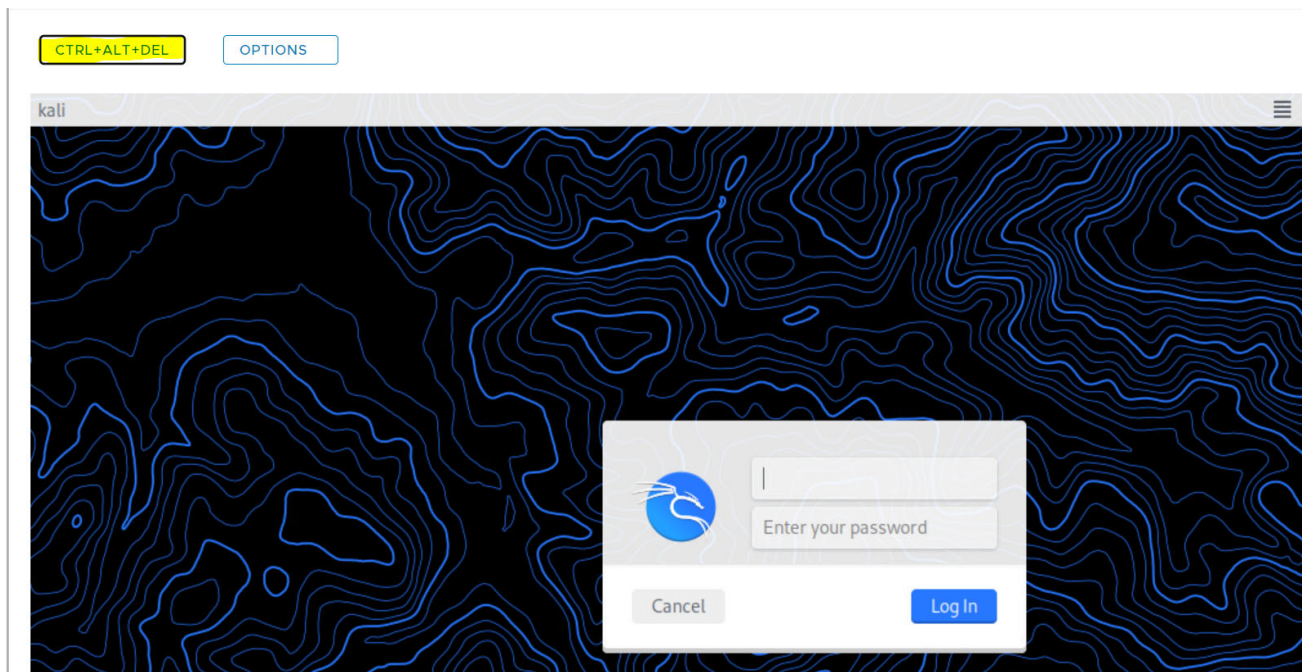
Virtual Machines!

Sometimes the Virtual Machines appear to misread the Caps Lock as the opposite of the host machine system.

Try this: Type in the username field and see if your keyboard is stuck on Caps Lock (within the virtual machine). Or try typing the password, with the Caps Lock in the host machine ON. Another thing to try is Restart the Virtual machine.

I cannot send a CTRL ALT DELETE to my Racktop Machine!!!

To send the "CTRL-ALT-DEL" command to the Virtual machines, click on the upper left corner:



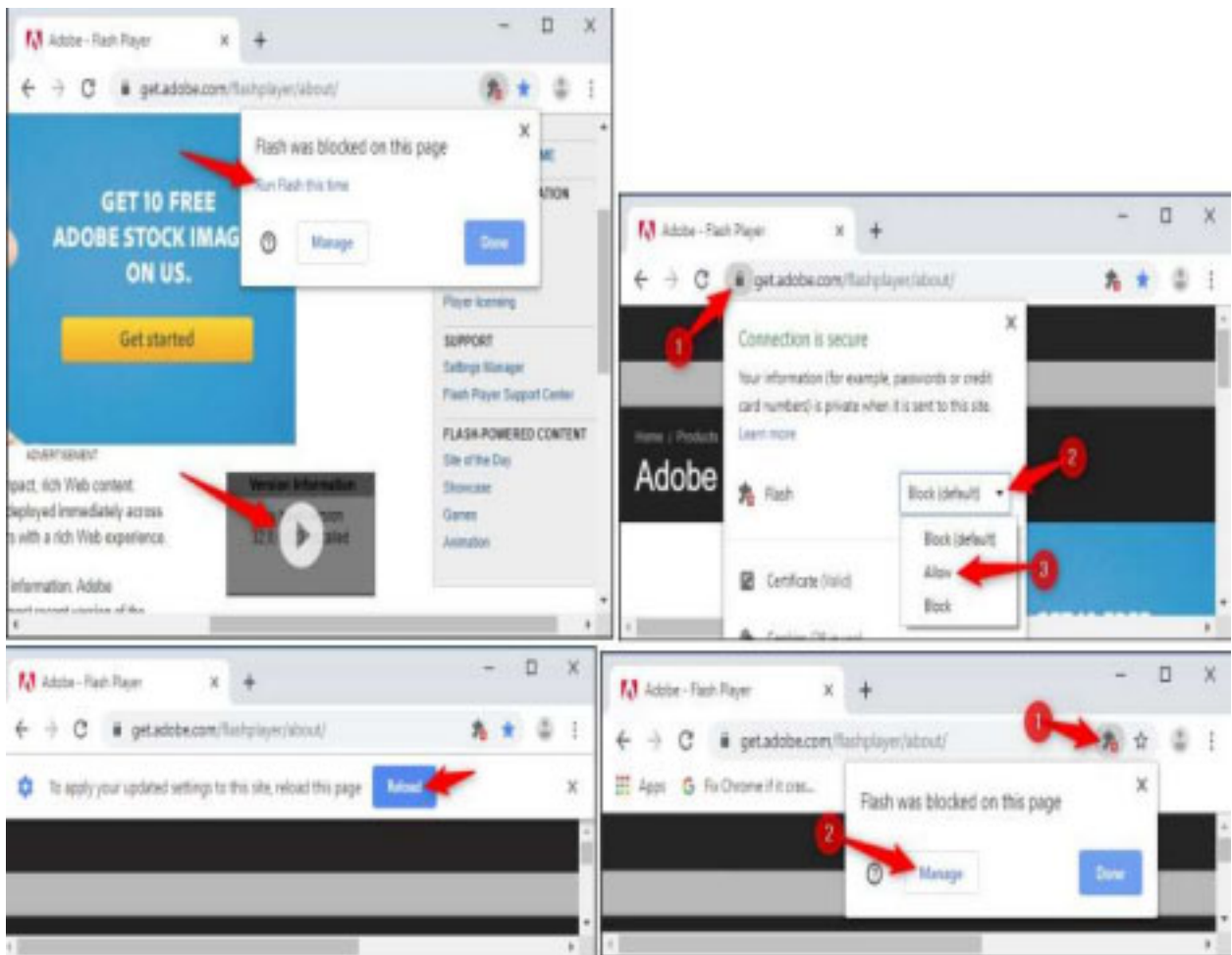
I cannot see the Racktop login page?

Try using a different browser ie. Chrome, Firefox, or Internet Explorer.

Go to www.google.com and type in 'How do I use flash with Chrome' 'How do I use flash with Internet Explorer', or 'How do I use flash with Firefox' or 'YouTube How do I use flash in Firefox' or 'How do I use flash Chrome' or 'How do I use flash Chrome YouTube', without the quotes. You can even go to www.google.com and do a video search. Type in 'how do I use flash chrome'.



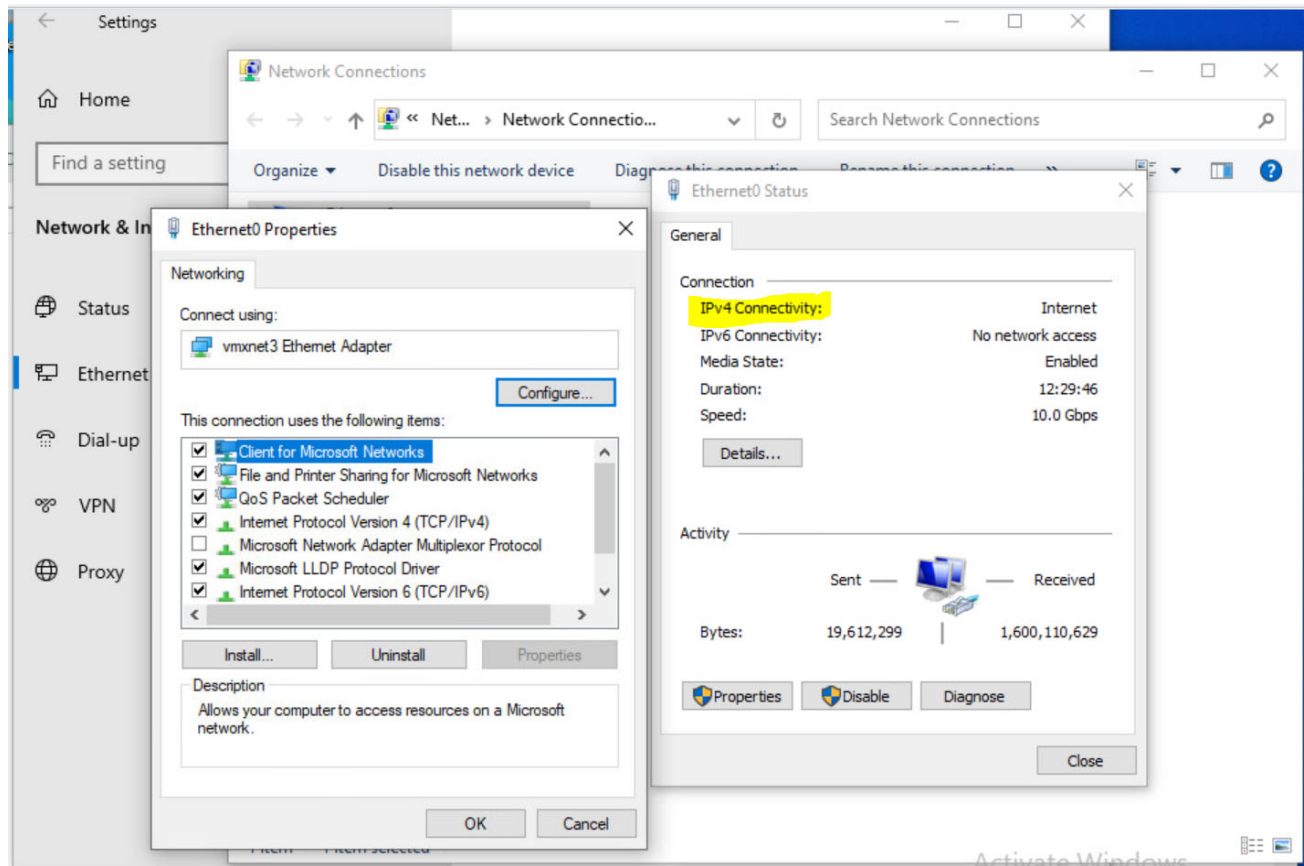
Or go to www.youtube.com and type in 'How do I use flash in Internet Explorer' without the quotes. Chrome: Try the following:



The internet is no longer working on my Racktop machine.

Please make sure you have the setting to STATIC not Dynamic IP. For every machine, you must use the static IPs that were in place before. The IP should be the IP listed under IP Address NOT External IP.

IPv6 doesn't seem to work on Racktop machines.



IPv4 is working on ALL the machines.

On Ubuntu, try the command `ifconfig`. If `ifconfig` is not working, install `inet-tools` on ubuntu with the command `'sudo apt`

`install net-tools'`. [Google this if you are not sure.]

If you're having trouble with Windows, please see the FAQ instructions for 'I can't ping either of the Windows machines!'

Get IPv6 Address	Command	Result
Open terminal/command line and enter the command	<code>ipconfig /all</code> OR <code>ifconfig</code>	Note: These are for example only. w10 fe80::9063:17fb:2ce:65c7%13 w16 fe80::dccb:ccc2:144d:2ac5%2 ubuntu fe80::a2f1:3a60:56cb:521c kali fe80::250:56ff:fe01:152d
Ping via IPv6 (from - to machine)	Command	Result
W10 to ubuntu	<code>ping fe80::a2f1:3a60:56cb:521c</code>	SUCCESS
w10 to kali	<code>ping fe80::250:56ff:fe01:152d</code>	SUCCESS
W10 to w16 (with windows firewall turned OFF on Windows machines)	<code>ping fe80::dccb:ccc2:144d:2ac</code>	SUCCESS
kali to ubuntu	<code>ping fe80::a2f1:3a60:56cb:521c</code>	SUCCESS
kali to w16 (with windows firewall off)	<code>ping fe80::dccb:ccc2:144d:2ac5%2</code>	SUCCESS if %2 at the end
kali to w10 (with windows defender firewall off)	<code>ping fe80::9063:17fb:2ce:65c7</code>	SUCCESS if %13 is NOT at the end
w16 to kali	<code>ping fe80::250:56ff:fe01:152d</code>	SUCCESS
w16 to ubuntu	<code>ping fe80::a2f1:3a60:56cb:521c</code>	SUCCESS
w16 to w10	<code>ping fe80::9063:17fb:2ce:65c7</code>	SUCCESS if %13 is NOT at the end
ubuntu setup ifconfig: command not found.	<code>sudo apt install net-tools</code> <code>ifconfig</code>	ens160: flags=4163<UP,BROADCAST,RUNNING,MULTICAST> mtu 1500 inet 192.168.2.102 netmask 255.255.255.0 broadcast 192.168.2.255 inet6 fe80::a2f1:3a60:56cb:521c prefixlen 64 scopeid 0x20<link>
ubuntu to loopback adapter	<code>ping ::1</code>	SUCCESS
ubuntu to loopback adapter	<code>ping -6 ::1</code>	SUCCESS
ubuntu to kali	<code>ping fe80::250:56ff:fe01:152d%ens160</code>	SUCCESS
ubuntu to kali	<code>ping6 fe80::250:56ff:fe01:152d%ens160</code>	SUCCESS if the adapter of the ubuntu host is included at end of ipv6 addr (%ens160)
ubuntu to W10	<code>ping fe80::9063:17fb:2ce:65c7%ens160</code>	SUCCESS
ubuntu to W16	<code>ping fe80::dccb:ccc2:144d:2ac5%2</code>	SUCCESS
ubuntu to W16	<code>ping fe80::dccb:ccc2:144d:2ac5%ens160</code>	SUCCESS

Technical Issues?

Should you have any Racktop technical issues, please contact us or email us

cybersecuritylab@montgomerycollege.edu

If your issue is severe, please include the best phone number to reach you by.

Otherwise, we strongly advise that you stop by the lab or schedule a time to meet us in the lab.

Noboa, Eduardo Alusine Sesay Cybersecurity Program Manager Cybersecurity Instructional Lab Coordinator

Montgomery College Cybersecurity Center Address: Montgomery College Cybersecurity Center Address: High Technology (HT) and Science Center Bldg, Room HT 230 High Technology (HT) and Science Center Bldg, Room HT 230 20200 Observation Dr, Germantown, MD 20876 20200 Observation Dr, Germantown, MD 20876.

We will troubleshoot or escalate to Racktop support when necessary.

Do NOT wait until the last minute! Email us as soon as possible. Requests may take 1-2 business days to handle, depending on its severity. Requests made

during the weekend are NOT business hours, so please plan accordingly!

If you are trying to submit to an assignment on blackboard that no longer allows for submission, it is recommended to email your submission to the professor, along with an explanation of events. However, it is ultimately your responsibility to finish your assignments on time.