



Early College Information Session

Associate of Science, Biological Science

Associate of Science, Nursing

Associate of Applied Science, Diagnostic Medical Sonography

Associate of Applied Science, Physical Therapy Assistant

Associate of Applied Science, Radiologic Technology

Associate of Applied Science, Surgical Technology

Cultural Arts Center – Takoma Park/Silver Spring Campus

October 15, 2019



EC



Additional Information

Program information, including a copy of presentation and video recording, can be found at:

www.montgomerycollege.edu/early-college

<https://montgomeryschoolsmd.org/curriculum/partnerships/dual-enrollment.aspx>

[From the MCPS Home Page, search “Dual Enrollment” and click on the first result. The Early College in](#)

Career and Postsecondary Partnerships → Dual Enrollment



DUAL ENROLLMENT: MCPS AND MONTGOMERY COLLEGE (MC) PARTNERSHIP

Introduction and Overview

MCPS and MC have partnered to provide Dual Enrollment opportunities to college ready students at all high schools as well as Middle and Early College options.

Dual Enrollment opportunities allow MCPS college ready high school students to take college courses during the academic school year. High school students who enroll and take a college course at any Maryland public college or university are able to do so at a reduced cost.

If students select to take courses at MC, and meet qualifications for and separately apply for the MC High School Grant, they may be able to take college courses at no tuition cost. Students are able to take college courses offered on the high school campus (at select high schools), on a

Early College (EC) at Montgomery College

- MCPS and Montgomery College (MC) collaboration which provides the opportunity for students from multiple high schools to complete their high school graduation requirements on an MC campus and begin their college career.
- MCPS students will complete their Maryland State high school diploma requirements while simultaneously earning an Associate of Science or an Associate of Applied Science degree from Montgomery College.
- Early College students will take their first year of college classes together as a cohort. In the second year in the program, students will continue to take most of their classes with the Early College cohort, however, may also take elective courses with other MC students.
- The students will not take any classes at the high school. They will be fulltime college students taking all of the coursework for the 11th and 12 grade years on the MC campus.
- The MC A.A., A.S., A.A.S and A.A.T. degrees earned will transfer to a four-year institution within the state of Maryland and provide an opportunity for Montgomery County to support current students while building a future workforce. By creating a pathway from MCPS, to MC, to a bachelor's degree, and then back to the Montgomery County workforce.

Assumptions & Admission Requirements

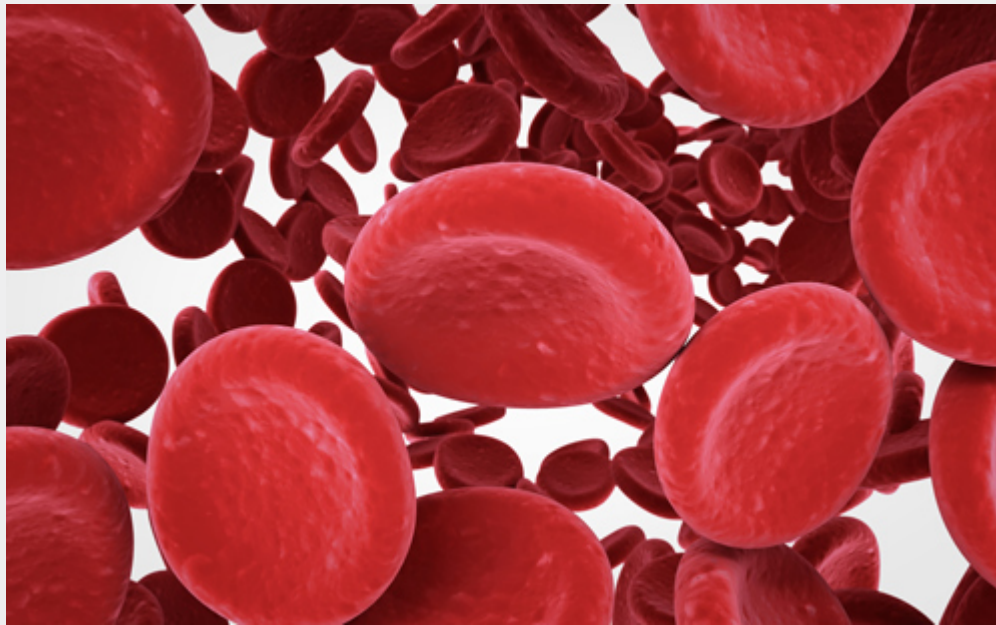
Assumptions

- ✓ Students have met or are near completion of fulfilling their SSL hours.
- ✓ Students have successfully completed all 9th and 10th grade classes as outlined on the degree pathways including P.E.
- ✓ Students must earn grades of “C” or higher in their college classes in order to maintain eligibility to remain in the program. Grades of “C” or better are crucial as this may affect transferability of credits, students ability to receive future federal financial aid and satisfying prerequisites for future college classes.
- ✓ With the help of their Early College Coordinator, students will research transfer opportunities to determine appropriate admission application process and transferability of their credits.

Admission Requirements

- ✓ Students have taken their mathematics and English state assessments.
- ✓ Have an unweighted MCPS cumulative G.P.A. of 2.75 or higher at the end of 10th grade.
- ✓ Complete the MCPS Application, the MCPS Early College Application and the Montgomery College Admissions Application.
- ✓ Participate in the Summer Transition program: Monday-Friday, 9 a.m.-noon, **July 6 - July 31 (Biological Science students), or July 6 – August 11, 2020 (Health Science students)** on the Takoma Park/Silver Spring Campus.
- ✓ Meet assessments into individual Early College programs.

A.S. in Science - Biological Science Early College Degree Program



Examples of A.S. in Biological Science Transfer Opportunities

272 students graduated and/or transferred in 2017 in Biological Sciences.

-5.5% of all transfer students at MC were Biological Sciences students in 2017.

-Biological Sciences was the 3rd highest program to transfer students in 2017.

-Our largest transfer institution is UMCP followed by UMBC and UMUC.



MONTGOMERY COLLEGE

**FY2017
TOP TRANSFER
TO 4-YEAR
INSTITUTIONS**

Most Popular 4-Year Institutions

	<u>School Name</u>	<u>State</u>
1	Univ. of MD - College Park	MD
2	Univ. of MD - Baltimore County	MD
3	Univ. of MD - University College	MD
4	Towson University	MD
5	Salisbury University	MD
6	Univ. of Maryland - Baltimore	MD
7	University of Baltimore	MD
8	Bowie State University	MD
9	Univ. of Maryland - Eastern Shore	MD
10	George Washington University	DC
11	Frostburg State University	MD
12	Howard University	DC
13	American University	DC
14	Washington Adventist University	MD
15	Chamberlain College of Nursing	MO
16	West Virginia University	WV
17	University of the District of Columbia	DC
18	Hood College	MD
18	Trinity Washington University	DC
20	Marymount University	DC
21	The Catholic University of America	DC
22	Stevenson University	MD
23	Pennsylvania State University	PA
24	St. Mary's College of Maryland	MD
25	George Mason University	VA

Career Opportunities

Students that want to pursue careers in the following usually earn degrees in Biological Sciences:

- Physician
- Physician's Assistant
- Physical Therapist
- Biological Lab Technician
- Pharmaceutical Rep
- Food Scientist
- Environmental Scientist
- Bioinformatics Scientists
- Agricultural Technicians
- Cytogenetic Technologists
- Health Educator
- Biology Teacher/Professor
- Medical Lab Technician
- Microbiologist
- Dentist
- Pharmacist
- Occupational Therapist
- Biochemist
- Genetic Counselor
- Forensic scientist
- Research Scientist
- Bioinformatics Technicians
- Soil and Plant Scientists
- Biomedical Engineers
- Medical and Health Services Manager
- Biostatistician
- Health Communications Specialist
- Zoologists and Wildlife Biologist

A.S. in Nursing Early College Degree Program



Academic Progression Opportunities for Nursing Major

Chamberlain College of Nursing (VA)

- A.S. Nursing to B.S. Nursing

Drexel University - Online (PA)

- A.S. Nursing to B.S. Nursing

George Washington University (D.C.)

- A.S. Nursing to B.S. Nursing

Trinity Washington University (D.C.)

- A.S. Nursing to B.S. Nursing

University of Maryland, School of Nursing (MD)

- A.S. Nursing to B.S. Nursing (Main Campus and Shady Grove Campus)

Career Opportunities in Nursing

- Acute Care (Hospital)
- Long-Term Care (Nursing Home)
- Home Care
- School Nurse

A.A.S. in Diagnostic Medical Sonography Early College Degree Program



Transfer Opportunities for A.A.S. Diagnostic Medical Sonography

Towson University (MD)

- A.A.S Diagnostic Medical Sonography to B.T.P.S Allied Health

Notre Dame of Maryland University (MD)

- A.A.S. Diagnostic Medical Sonography to B.S. Radiological Sciences

University of Baltimore (MD)

- A.A.S. Diagnostic Med. Sonography, all tracks to B.S. Health Systems Management (Main Campus and Shady Grove Campus)

Career Opportunities in Diagnostic Medical Sonography

- Acute Care (Hospital)
- Radiologic Outpatient Centers

A.A.S. in Physical Therapy Assistant Early College Degree Program



Academic Progression Opportunities for A.A.S. Physical Therapy Assistant

Towson University (MD)

- A.A.S. Physical Therapy Assistant to
B.T.P.S Allied Health

University of Baltimore (MD)

- A.A.S. Physical Therapy Assistant to B.S.
Health Systems Management (Main
Campus and Shady Grove Campus)

Career Opportunities for Physical Therapy Assistant

- Acute Care (Hospital)
- Long-Term Care
(Rehabilitation/
Nursing Homes)
- Outpatient Centers

A.A.S. in Radiological Technology Early College Degree Program



Academic Progression Opportunities for A.A.S. Radiological Technology

Notre Dame of Maryland University (MD)

- A.A.S. Radiological Technology to B.S. Radiological Sciences

Towson University (MD)

- A.A.S. Radiologic Technology to B.T.P.S Allied Health

University of Baltimore (MD)

- A.A.S. Radiologic Technology to B.S. Health Systems Management (Main Campus and Shady Grove Campus)

Career Opportunities for Radiological Technology

- Acute Care (Hospital)
- Radiologic Outpatient Centers

A.A.S. in Surgical Technology Early College Degree Program



Academic Progression Opportunities for A.A.S. Surgical Technology

Towson University (MD)

- A.A.S. Surgical Technology to B.T.P.S
Allied Health

University of Baltimore (MD)

- A.A.S. Surgical Technology to B.S. Health
Systems Management (Main Campus and
Shady Grove Campus)

Career Opportunities for Surgical Technology

- Acute Care (Hospital)
- Outpatient Surgery Centers

Mr. Safiullah Rifai

Year Two Early College
A.S. Mathematics Student

EC² Biological Science Program Cost to Student

Cost of degree program including tuition, fees and instructional materials to a non-Early College program student	\$12,700
Approximate cost of program paid by MC & MCPS	\$ 9,920
Approximate cost of program to student (MC fees)	\$ 2,724 <i>(average of \$681 per semester)</i>
Approximate cost of program to student who is FARMS eligible	\$ 0

- Early College students are not eligible for federal financial aid. However, students may apply for Montgomery College High School Grant funds to cover portions of their fees as these funds are available. For more information on the MC High School Grant, go to the *Dual Enrollment Tuition, Fees and Financial Assistance* page at: <http://cms.montgomerycollege.edu/EH DU/Department2.aspx?id=50732>
- **Transportation:** MC students can use Montgomery County Ride On bus service with their student photo ID and current term registration sticker as well as having access to the MC inter-campus shuttle system. MCPS does not provide bus service.

Biological Science Degree Approximate Tuition: *Early College versus Traditional Tuition*

Program	Required Years After High School	Total Tuition, Fees & Books for Degree
UMD College Park <i>Bachelor of Science degree</i>	4	\$47,116 (\$43,116 tuition & fees + \$4,000 instructional materials)
Montgomery College <i>A.A., A.S., or A.A.S. degree</i> plus UMD College Park <i>Bachelor of Science degree</i>	4	\$36,148 (MC: \$12,700 + UMD: \$23,558)
Early College at Montgomery College <i>A.A., A.S., or A.A.S. degree</i> and UMD College Park <i>Bachelor of Science degree</i>	2	\$26,282 <u>or a savings of \$20,834</u> (EC at MC: \$2724 + UMD 2yrs. at \$22,558)

Biological Science - Time to Completion

	Year 1	Year 2	Year 3	Year 4	Year 5	Year 6	Year 7	Year 8
Traditional Path								
	4 years to high school diploma				4 years to baccalaureate (bachelor) degree			

	Year 1	Year 2	Year 3	Year 4	Year 5	Year 6	Year 7	Year 8
Early College Path								
	2 years of high school		2 years to high school and 2 year degree		2 years to baccalaureate (bachelors) degree		2 years to post-baccalaureate (Masters) degree	

Health Science Degree Approximate Tuition: Early College *versus Traditional Tuition*

Program	Required Years After High School	Total Tuition, Fees & Books for Degree
UMD <i>Bachelor of Science degree</i>	4	<p style="text-align: center;">\$47,116</p> (\$43,116 tuition & fees + \$4,000 instructional materials)
Montgomery College <i>A.S., or A.A.S. degree</i> plus UMD College Park <i>Bachelor of Science degree</i>	3 + 2 = 5	<p style="text-align: center;">\$42,608</p> (MC: \$19,050 + UMD: \$23,558)
Early College at Montgomery College <i>A.S. or A.A.S. degree</i> and UMD <i>Bachelor of Science degree</i>	1+2=3	<p style="text-align: center;">\$31,632</p> <p style="text-align: center;"><u>or a savings of \$15,484</u></p> (EC at MC + year 3 at \$6350 +9074 plus UMD 2yrs. at \$22,558)

Health Science Program time To Completion

Traditional Health Science Program pathway after high school graduation:

4 years of high school + **3 years to MC A.A.S / A.S. degree** + **2 years to baccalaureate** = **9 years** for Nursing, Diagnostic Medical Sonography, Physical Therapy Assistant and Radiologic Technology.

4 years of high school + **2 years to MC A.A.S. degree** + **2 years to baccalaureate** = **8 years** for Surgical Technology.

Early College Health Science pathway to A.S./A.A.S degree + baccalaureate:

2 years of high school + **2 years H.S.+*1 year (3 years)@ MC A.S./A.A.S.** + **2 years to baccalaureate** = **7 years** for Nursing, Diagnostic Medical Sonography, Physical Therapy Assistant and Radiologic Technology.

2 years of high school + **2 years H.S. @ MC A.A.S.** + **2 years to baccalaureate** = **6 years** for Surgical Technology.

**MCPS & MC will cover tuition and instructional costs while student is enrolled in high school.*

General Education Requirements

- Almost all colleges and universities require a set of general education or core courses. General Education courses are part of all Montgomery College associate degree programs.
- In these courses, students develop a foundation of skills, knowledge, and values, across a spectrum of topics, that prepare students for success in their future educational pursuits as well as in their personal and professional lives. These are courses that are taken in addition to those courses that are required for the major or degree program.
- Students will take classes in writing, humanities, science, and behavioral and social science as part of their general education requirements.
- The General Education coursework will transfer to University System of Maryland (USM) 4-year institutions as well as to most colleges and universities.

Early College Program Academic Support

Mandatory Summer Transition Program

Biological Science students: July 6-July 31, 2020

Monday-Friday, 9 a.m.- noon

Health Science students take BIOL 150 course: July 6-August 11, 2020

Monday-Thursday 9 a.m.-1:00 p.m.

on the Takoma Park/Silver Spring Campus

Early College Program Summer Academic Support

Purpose of the Mandatory Summer Transition Program

EC students will be prepared to meet the demands of college by bridging the gap between high school and college and facilitate student readiness for college. In addition to improving their math readiness, students will also:

- Prepare for specific degree college mathematics curriculum
- Health Science students will take their first required MC class; BIOL 150
- Learn how to access campus resources and services
- Discover new study and time management skills and improve team-building and problem-solving skills
- Become familiar with the campus and student organizations and clubs
- Understand graduation requirements
- Increase knowledge of MC policies/procedures

Additional Academic Support

Ongoing Services & Support:

- Students are highly encouraged to begin preparing for the college assessment testing right now by using the **Khan Academy** to increase English and Mathematics skills.
- Embedded coaches working with specific Early College courses.
- Early College Academic Coordinator located on the Takoma Park/Silver Spring Campus will be available to assist students with advising, course registration, connect students to services, transfer questions, etc.

TP/SS Campus Academic Support

- Science Learning Center (SLC) in Pavilion 1 Building (P1), Room 101A: Provides educational services and assistance to students enrolled in biology classes including study rooms, tutoring, microscopes and models, PCs, and instructional materials.
- Registered students who are taking mathematics courses at Montgomery College can use the Mathematics Learning Center in P1-101D.
- Writing Center in the Resource Center: Services include in-person and online one-to-one tutoring, specialized workshops, PC and MAC computers, Microsoft Office suite and various resources assigned by faculty. Can make appointment for help.
- The Medical Learning Center (MLC) provides a comfortable learning environment for Health Science students to study and learn. The MLC has computers, health science books, health science CDs, media accessories, a Disability Support Services workstation as well as other resources and services

Disability Support Services

- **DSS provides accommodations and supports for qualified students with documented disabilities college-wide.**
 - **Services that students received through an IEP or 504 plan at MCPS do not convey to college.**
 - **Students should apply for college services at least one month prior to the start of their classes.**
- ✓ **Contact the Takoma Park/Silver Spring Campus DSS office on 240-567-1480**

Next Steps

- A link will be sent via Connect Ed to all initially qualified Grade 10 students who must complete the ***MCPS Common Application*** by **November 1st^h deadline**. The application link will also be on the Dual Enrollment/Early College webpage.
- Eligible and Non-Eligible students will be informed of status by MCPS by **December 13, 2019**.
- Eligible students will receive an email and be asked to complete the ***MCPS Early College Application Form*** and ***Montgomery College Admissions Application*** by **January 3, 2020**.
- Eligible students will be contacted by their high school and scheduled to take the College Board ACCUPLACER assessment by **February**.
- All Eligible students who meet the program requirements will be provisionally accepted to the summer transition program pending final grades and MCAP and state assessment scores and will be notified by **mid-April**.
 - NOTE: If there are more eligible students than seats, a lottery will be held and students will be informed of their status.
- Attend and satisfy requirements of the Early College Summer Transition program, July 6-July 31, and assess into appropriate math course for degree option.
- Mandatory new student meeting will be held the **week of August 24th** with the **fall 2020 semester courses beginning on Monday, August 31, 2020**.

Contact Information

General questions about the Early College experience, contact Amy Crowley at: amy.crowley@montgomerycollege.edu

Questions on the **application process**, contact Mike Sullivan at: Michael_P_Sullivan@mcpsmd.org

For questions on the A.S. Science degree with a Biological concentration, please contact Valerie Lantz at valerie.lantz@montgomerycollege.edu

If you have questions on the Health Science degree programs, contact Monique Davis at monique.davis@montgomerycollege.edu

Questions about **Disability Support Services**, contact Sue Haddad at: sue.haddad@montgomerycollege.edu