

JOIN OUR TEAM!



ABOUT CELEBRATE ABILITY

- Founded by a former MCPS special education teacher.
- We are an autism waiver provider offering a range of wrap-around in-home services including Family Consultation, Respite Care, and Individualized Intensive Support Services (IISS).
- Our team of Family Consultants (FCs) and in-home technicians have a variety of relevant background experience: Behavioral Analysts, Speech Pathologists, Transition Specialists, and those with Special Education experience.
- By pairing families with an FC who is the best match for their child, we create individualized treatment plans which are effectively implemented by our experienced team of IISS and Respite Technicians.



MEET THE CELEBRATE ABILITY ADMIN TEAM!



**Noel Bingham,
M. Ed.**

Founder & Executive
Director



Kay Inoue

Director of In-Home
Supports



Joanne Miller

Director of
Operations



Kim Avarello

Recruitment
Specialist

MEET THE CELEBRATE ABILITY ADMIN TEAM!



Jen Crowe

Payroll Specialist



Sina Huber-Daniels

Director of Administration



Ryan Parker

Administrative
Specialist

MEET THE CELEBRATE ABILITY CASE MANAGERS!



Antoine
Kennedy



Michelle
Lingebach



Donsu
Adams



Erin
Clark

WHAT IS THE AUTISM WAIVER?

- **Medicaid Home and Community-Based Services Waiver for Children with Autism Spectrum Disorder (Autism Waiver)**
- **August, 1998:** MDH applied for this Waiver to allow children with autism, determined to be eligible for institutional services in an Intermediate Care Facility for Individuals with Intellectual Disabilities (ICF-IID), to receive AW services in their home and community
- **September 1, 2000:** MDH received confirmation that Maryland's AW was approved.
- **2001: Eligible children in Maryland** began receiving services on the waiver.



WHAT DOES THE AUTISM WAIVER DO?

- The Autism Waiver (AW) is designed to **provide community-based, long-term, person-centered therapeutic services and support to eligible children and youth with Autism Spectrum Disorder (ASD) to enable home and community living as an alternative to institutional care.**

(<https://marylandpublicschools.org/>)

WHO ARE THE CLIENTS WE SERVE?

Typically between 10
and 21 years of age

Self-directed:
Will likely require
prompting

May demonstrate
noncompliance and
require behavior
management strategies

Will likely be working
on functional life skills

May need assistance
with daily life
activities including
hygiene

Need staff who are
motivated to help



SERVICES AVAILABLE THROUGH CELEBRATE ABILITY

IISS- Intensive Individual Support Services

Intensive Individual Support Services are one-on-one interventions provided in the home and community of the student.

IISS utilizes the principles of behavior management through structured support, reinforcement, and modeling techniques.

Responsibilities of IISS Technicians

- Promote independence across all learning domains, including self-care and activities of daily living
- Help clients manage their behavior and teach alternative behaviors when appropriate
- Assist with the development of executive functioning skills
- Encourage participation in age-appropriate leisure skills and recreational activities with peers
- Improve clients' ability to function and adapt at home and in the community
- Facilitate positive self-expression and interpersonal communication



SERVICES AVAILABLE THROUGH CELEBRATE ABILITY

Respite Care

Celebrate Ability offers Respite Care services, which focus on giving assistance to parents with children who have been diagnosed with autism or related developmental disorders.

Goals of Respite Care

- Respite Care provides for supervision and assistance with daily living activities when the principal family members or guardians are not available to provide care to the child.
- We provide care in the child's home or community setting.
- Regardless of the setting, we make sure that the child's needs are attended to while they are away from their family.



QUALIFICATIONS OF OUR TECHNICIANS

Experience in the Field

Our technicians must have 100 hours of experience of working with individuals with autism through paid positions, volunteer experience, or personal experience. Minimum of a HS diploma is required.



Professionalism

Technicians need to be comfortable working independently, making quick decisions and communicating with families of their clients. All applicants must clear a CJIS background check.



Our technicians help clients gain the skills to thrive in their homes and communities and are motivated to create the best opportunities for success.

Motivation



Knowledge of behavior management techniques, prompting strategies, positive reinforcement is critical to our clients' success in gaining skills.

Knowledge



WHY WORK WITH US?

Compensation

IISS:

\$20-\$25 per hour

depending on
experience

Respite

\$16.00 per hour

Great for Student Schedules

Families are almost always
seeking **after-school** and
weekend hours.

Sessions tend to be **3-4
hours at a time** and may
occur multiple times per
week depending on need.

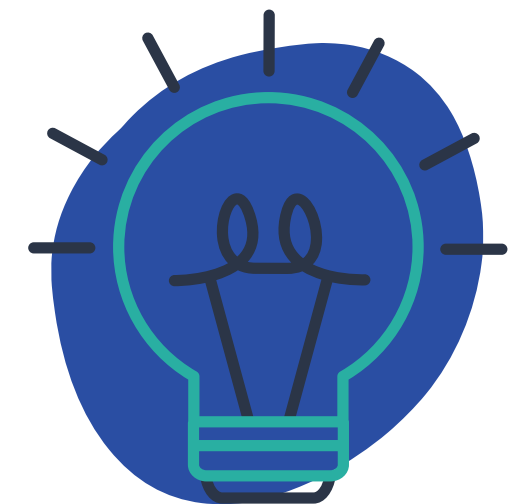
Flexibility

You tell us when you are
available to work and we
match you with a client!

Families are usually
willing to work with
student schedules/
semester class time
changes with notice.

Opportunities for Growth

Start as a technician and
work up to family
consultant and case
manager.



THANK YOU!

Interested in joining our amazing team?
We hope to hear from you soon!

www.celebrateability.org

Send resumes to:
Kim@celebrateability.org

