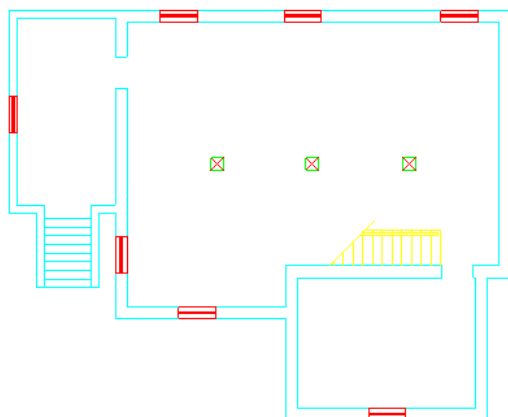


# Apexenvironmental, inc.

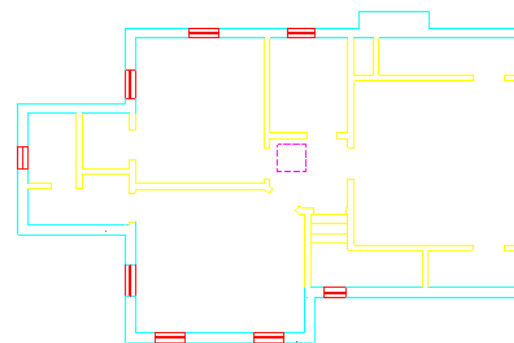
Table 2

Assessment of Asbestos-containing Building Materials  
Child Care Center - Takoma Park Campus  
Montgomery Community College

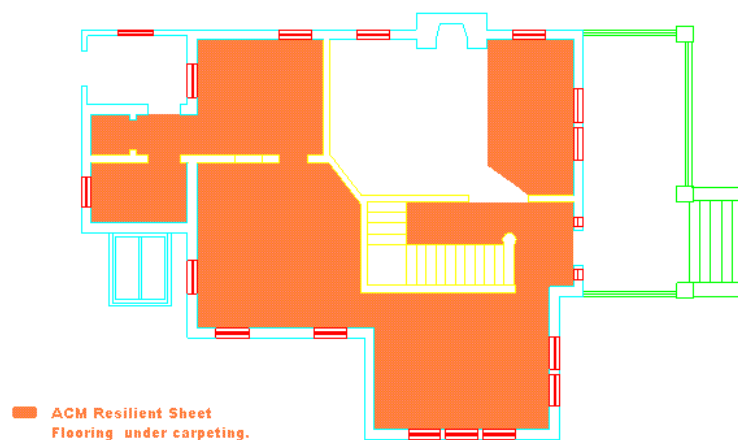
<u>Material</u>	<u>Location</u>	<u>Assessment</u>
Pipe. Insulation REMOVED 6/23/93	First Floor Bathroom; Above Ceiling Tile	Significantly . damaged, friable TSI with potential for damage.
Mudded Joint REMOVED 6/23/93	First Floor Bathroom; Above ceiling Tile	Damaged, friable TSI with potential for damage.
Resilient Sheet Flooring (under LN-1/Carpeting)	First Floor; Throughout	Nonfriable miscellaneous material with low potential for damage.
Fire Door REMOVED 2/14/94	Second Floor; Landing	Nonfriable miscellaneous material with low potential for damage.
Electrical Wiring Insulation	Basement; Throughout	Friable miscellaneous material with damage potential.



### BASEMENT FLOOR PLAN



SECOND FLOOR PLAN



FIRST FLOOR PLAN



Montgomery  
College

Central Administration  
Office of Facilities  
900 Hungerford Drive  
Rockville, Md 20850  
Telephone: (301)-251-7363

Drawn By: R.A.B.      Ckd By: B.K

Designed By: <b>R.A.B.</b>	Approved By: <b>E.K.</b>
----------------------------	--------------------------

Notes

[illegible]

No.	Description	Date
Revisions		
Location Map		

Project Title

CHILD CARE CENTER  
RENOVATION

## Drawing TM1a

## FLOOR PLANS

Recall:  $1/4'' = 1'' - 3/4''$ 

Project No.	Drawing Number
-------------	----------------

35

Drawing Number

INC Facilities No.