

# MLDS CENTER

Maryland Longitudinal  
Data System

Better Data • Informed Choices • Improved Results

## Montgomery College Data Summit

August 22, 2018

Ann T. Kellogg

## *WHAT* does the MLDS Center do?

- **Develop** and **maintain** a data system that will contain student and workforce data from all levels of education and the State's workforce.
- Use the system to **generate timely and accurate information** about **student performance** that can be used to **improve the State's education system and guide decision makers at all levels.**

# HOW is the MLDS governed?



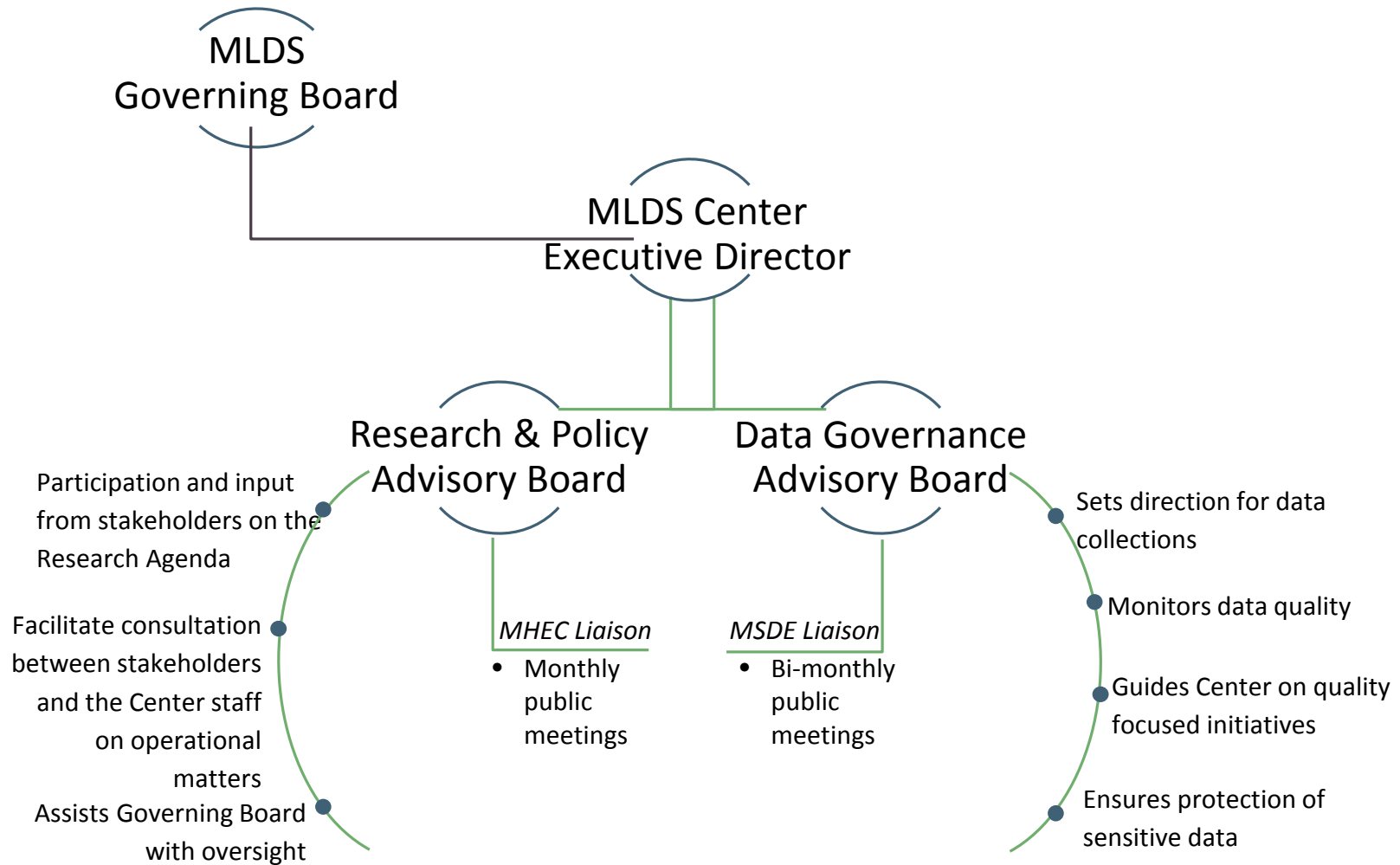
## MLDS Governing Board

Established in state law for creating and managing the MLDS

12 Member Board of education and workforce leaders

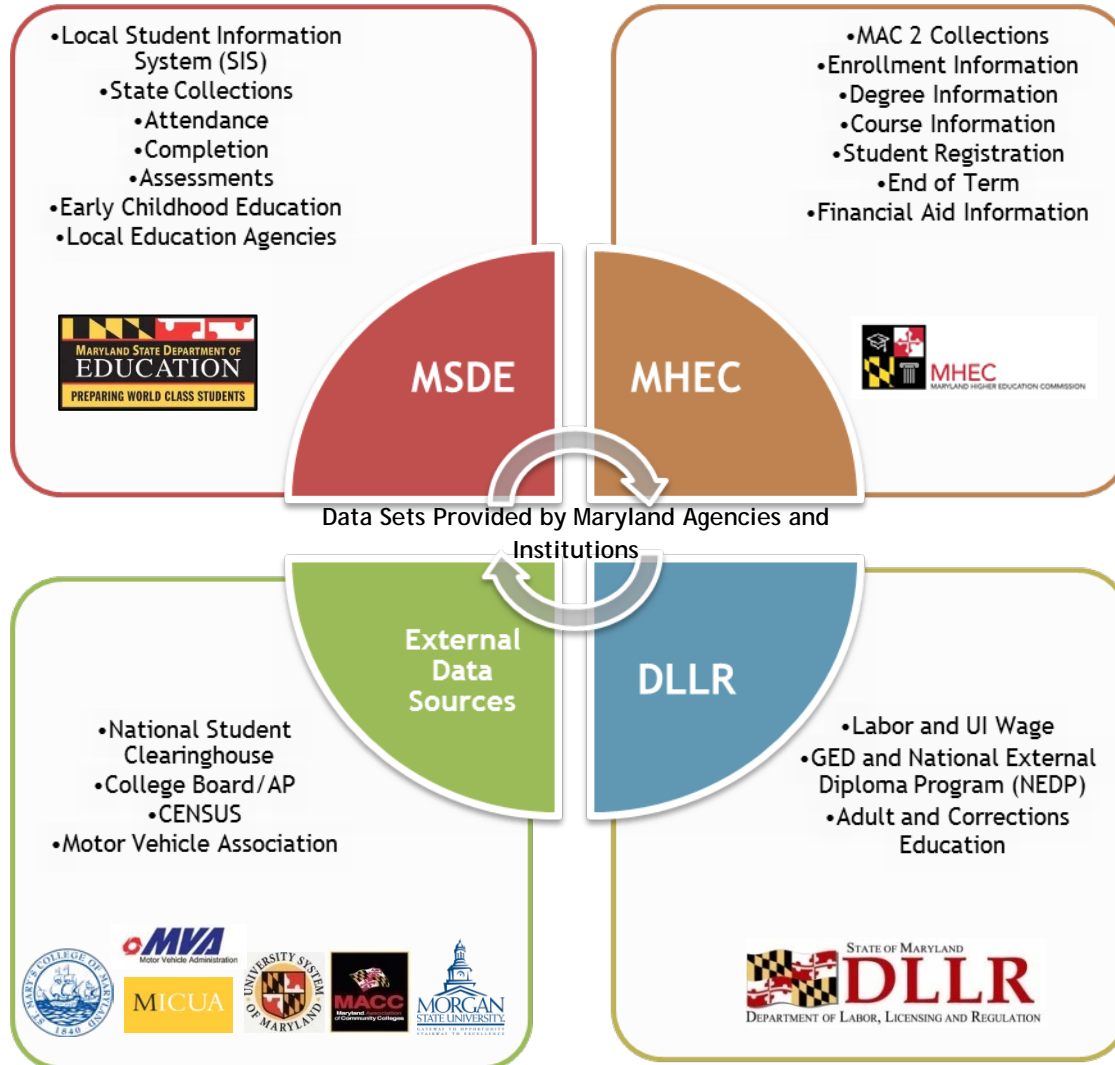
Makeup of Board ensures the success of the MLDS

# HOW does the MLDS Center Engage Stakeholders?



# WHAT data are collected?

## MLDS Data Delivery System



# *HOW* is privacy protected?

- **ONLY de-identified** data in the analysis, research and reporting
- **ONLY aggregate** data in reports and other information released
- **LIMITS** the **linkage** of data to 20 years from the date of the latest attendance in an education institution in Maryland
- **REQUIRES** a **Data Security and Safeguarding Plan**
- **REQUIRES** security and privacy audits

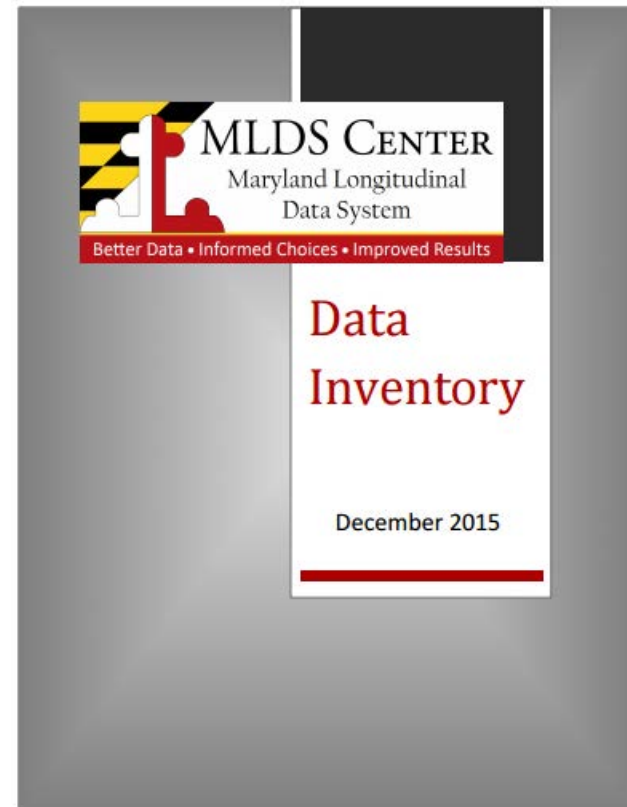
## ***HOW*** is the MLDS secured?

- Strict adherence to **legal limitations** placed on system access and use;
- A system design that secures and **limits access** to personally identifiable data; and
- Ongoing compliance with security requirements developed by the Governing Board.



# *HOW* are the data classified?

- Data Inventory
  - Data elements provided by agency partners
  - Approved by the MLDS Governing Board
  - Informs the general public about the contents of the MLDS
  - Definitions developed from agency partner terminology





# **HOW** are the data used?

- Governing Board has created a 20 question **Research Agenda**
- Research Agenda focuses on **Transitions**
- All Research must be **Cross-Sector/Cross-Agency**
- Research Agenda Categories
  - A. K-12 Readiness
  - B. Postsecondary Readiness and Access
  - C. Postsecondary Completion
  - D. Workforce Outcomes



# *HOW* are data linked?



Education



Workforce



Workforce



Education



Education



Workforce



Education

# Center Output

Produce relevant information for stakeholders through dashboards, data requests, and reports

- Dashboards
- Reports
- Pathways
- Presentations
- Data Requests

Employment  
Dual-Enrollment  
Major-Selection  
Academic-Preparation  
Part-Time  
Nursing CTE  
Teachers Math AP-Credit  
Language Computer-Science  
Science STEM  
Graduation-Rates

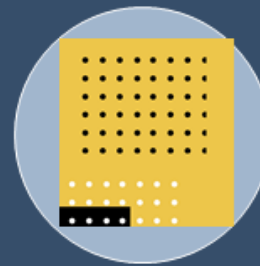
# Research and Output Priorities, 2018-2019



Output  
Priorities



Other  
Required  
Projects



Updates to  
Existing  
Output

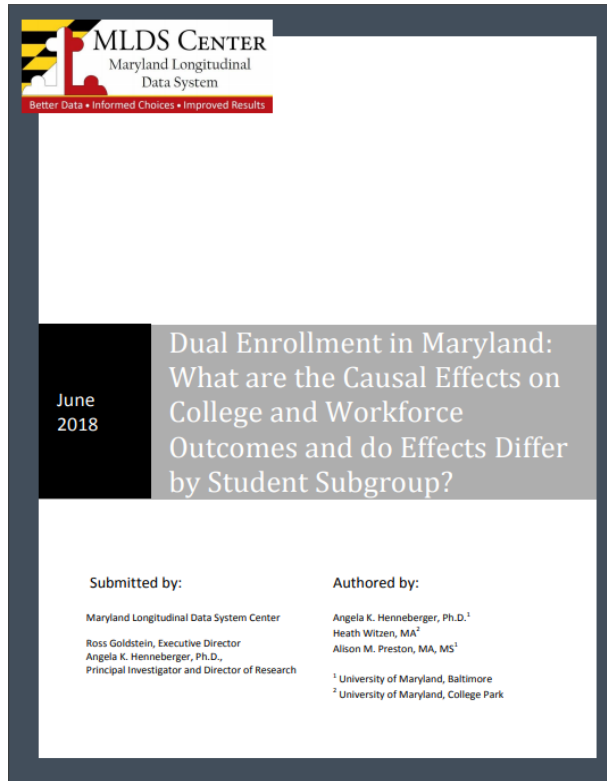


Project  
Partnerships

Research and Reporting Priorities, 2018-2019

# Examples of MLDS Center Current and Future Projects

# HOW are Community College data used: Reports and Presentations



**MLDS CENTER**  
Maryland Longitudinal Data System  
Better Data • Informed Choices • Improved Results

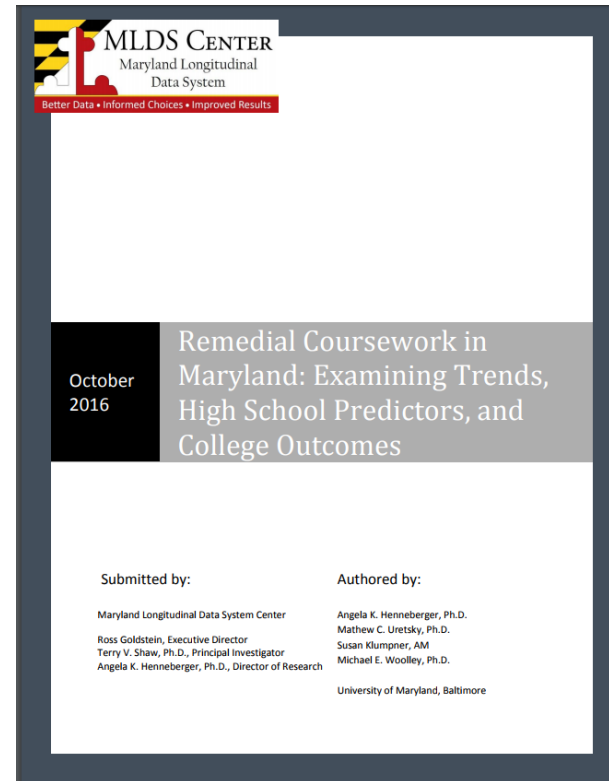
June 2018

**Dual Enrollment in Maryland: What are the Causal Effects on College and Workforce Outcomes and do Effects Differ by Student Subgroup?**

**Submitted by:**  
Maryland Longitudinal Data System Center  
Ross Goldstein, Executive Director  
Angela K. Henneberger, Ph.D., Principal Investigator and Director of Research

**Authored by:**  
Angela K. Henneberger, Ph.D.<sup>1</sup>  
Heath Wiltzen, MA<sup>2</sup>  
Alison M. Preston, MA, MS<sup>1</sup>

<sup>1</sup> University of Maryland, Baltimore  
<sup>2</sup> University of Maryland, College Park



**MLDS CENTER**  
Maryland Longitudinal Data System  
Better Data • Informed Choices • Improved Results

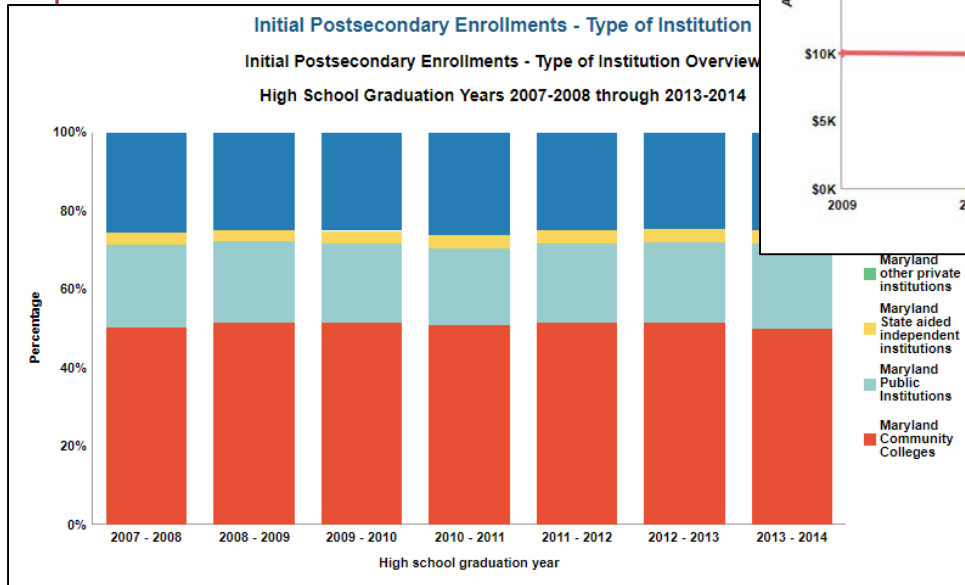
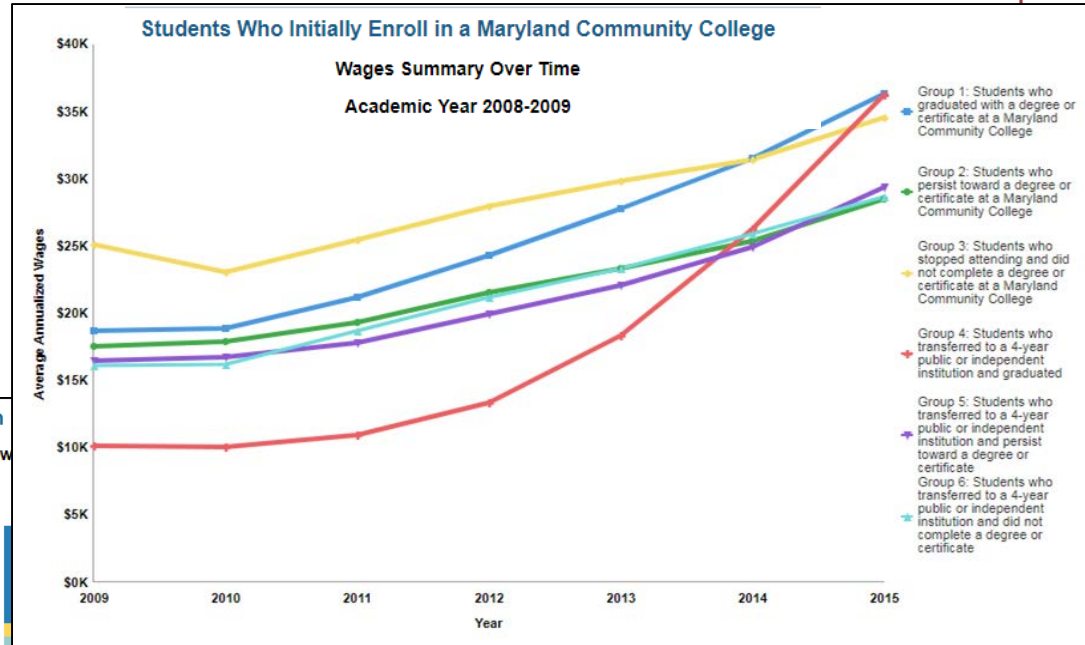
October 2016

**Remedial Coursework in Maryland: Examining Trends, High School Predictors, and College Outcomes**

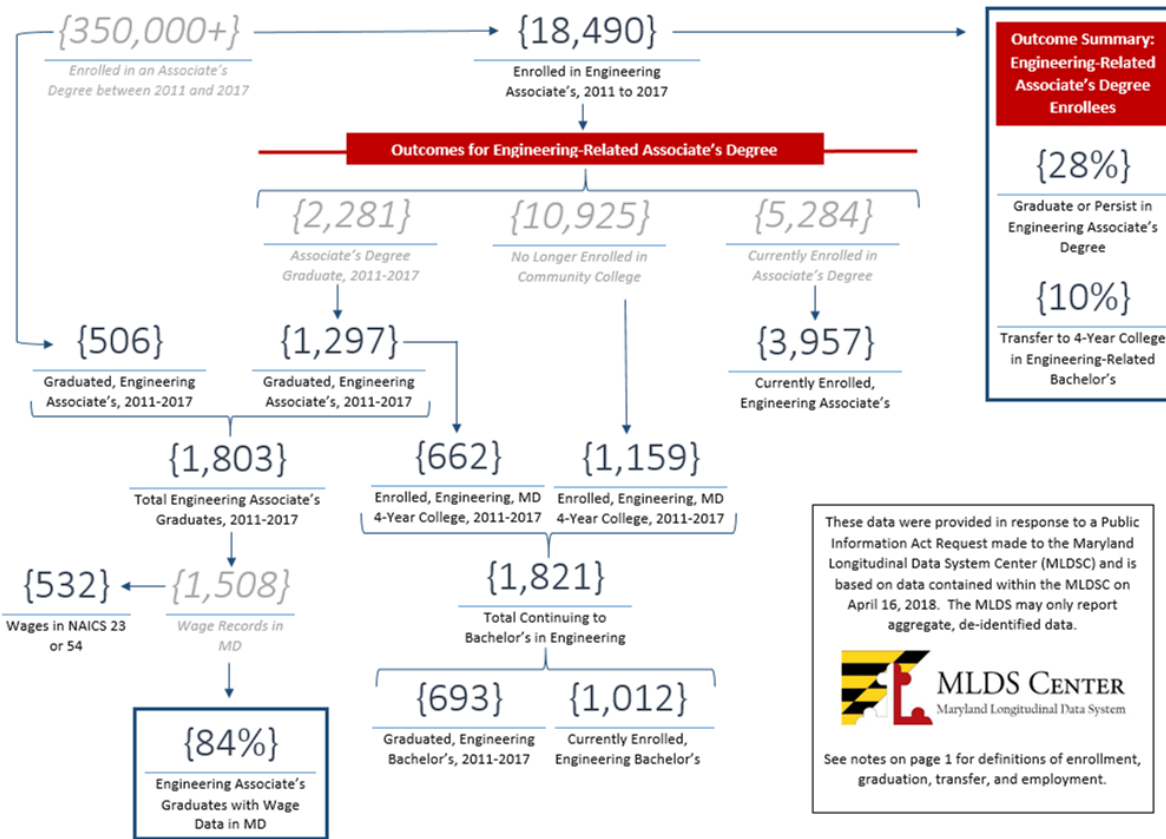
**Submitted by:**  
Maryland Longitudinal Data System Center  
Ross Goldstein, Executive Director  
Terry V. Shaw, Ph.D., Principal Investigator  
Angela K. Henneberger, Ph.D., Director of Research

**Authored by:**  
Angela K. Henneberger, Ph.D.  
Mathew C. Uretsky, Ph.D.  
Susan Klumpner, AM  
Michael E. Woolley, Ph.D.  
University of Maryland, Baltimore

# HOW are Community College data used: Dashboards




# HOW are Community College data used: Pathways



- What are the outcomes for students enrolled in the Associate's of Science in Engineering?
- What are the outcomes for students enrolled in the Associate's of Art in Teaching?

These data were provided in response to a Public Information Act Request made to the Maryland Longitudinal Data System Center (MLDSC) and is based on data contained within the MLDSC on April 16, 2018. The MLDS may only report aggregate, de-identified data.

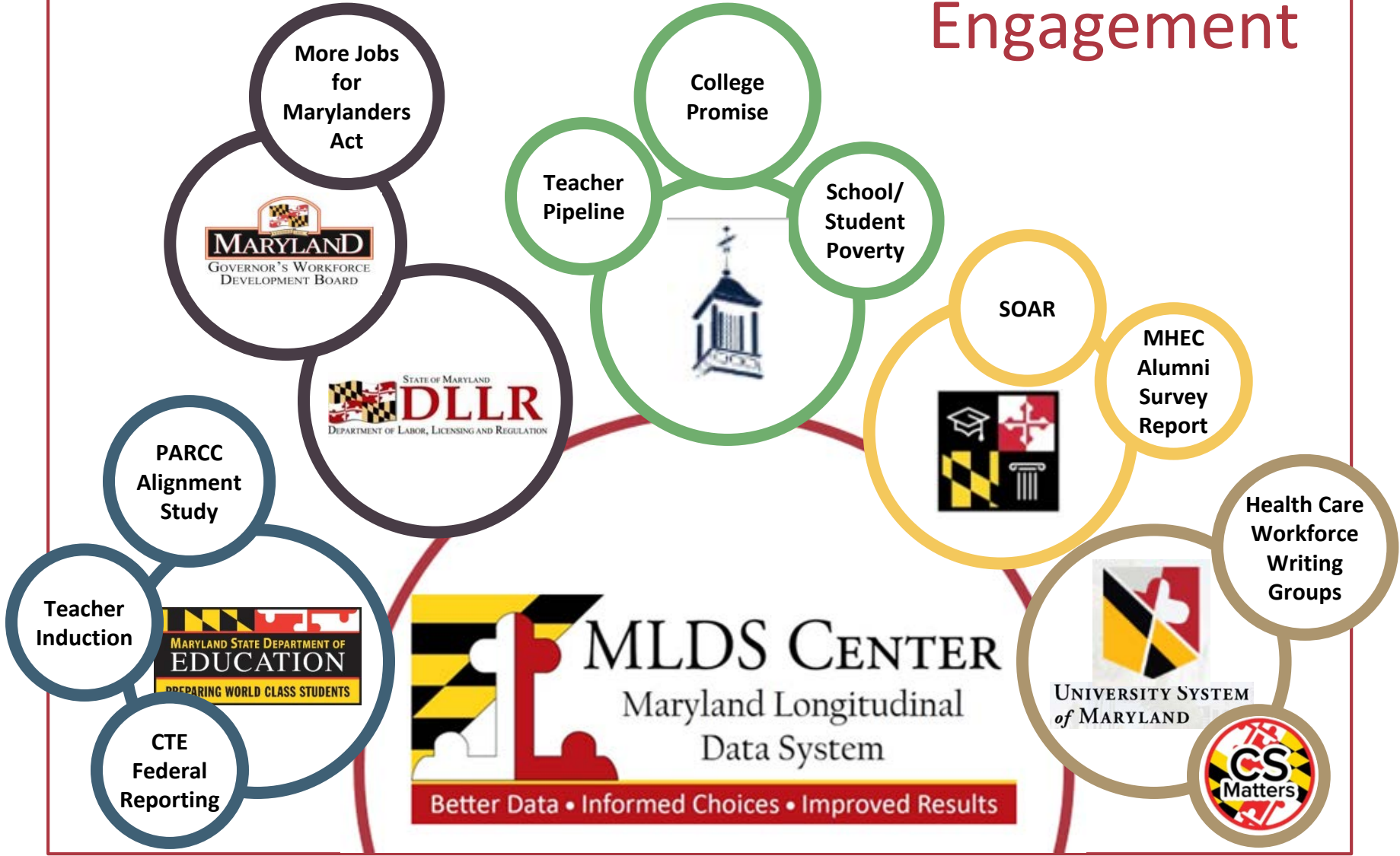


**MLDS CENTER**  
Maryland Longitudinal Data System

See notes on page 1 for definitions of enrollment, graduation, transfer, and employment.



# Collaborative Engagement



How can we help you?

## More information

<http://mldscenter.maryland.gov>



Dr. Angela K. Henneberger

Director of Research

[angela.henneberger@maryland.gov](mailto:angela.henneberger@maryland.gov)

410-706-6341

Ann T. Kellogg

Director of Reporting Services

[ann.kellogg@maryland.gov](mailto:ann.kellogg@maryland.gov)

410-767-0425