

# Lowest Ranked Industries

Bottom 20 Industries (4-Digit) in Montgomery County, MD

EMSI Q3 2015 Data Set

December 2015

## Montgomery College



900 Hungerford Drive  
Rockville, Maryland 20850

# Parameters

## Regions

Code	Description
24031	Montgomery County, MD

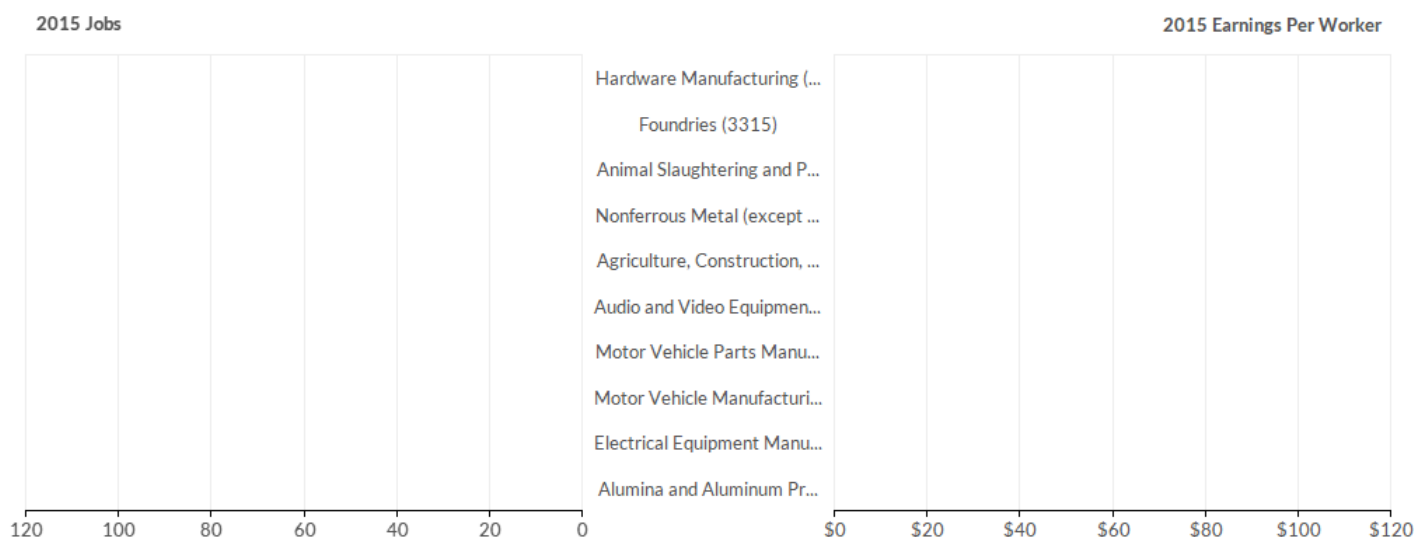
## Timeframe

2015 - 2025

## Datarun

2015.3 - Employees

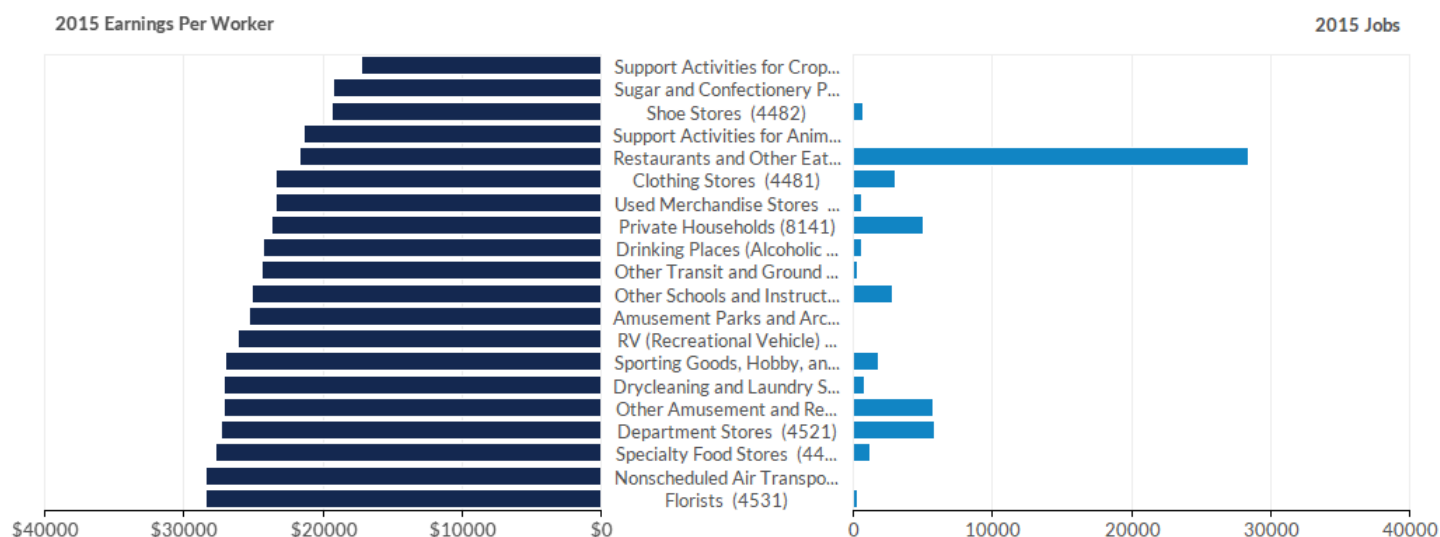
# Smallest Industries



Industry	2015 Jobs	2025 Jobs	Change in Jobs (2015-2025)	% Change	2015 Earnings Per Worker
Hardware Manufacturing	0	0	0	Insf. Data	\$0
Foundries	0	0	0	Insf. Data	\$0
Animal Slaughtering and Processing	0	0	0	Insf. Data	\$0
Nonferrous Metal (except Aluminum) Production and Processing	0	0	0	Insf. Data	\$0
Agriculture, Construction, and Mining Machinery Manufacturing	0	0	0	Insf. Data	\$0
Audio and Video Equipment Manufacturing	0	0	0	Insf. Data	\$0
Motor Vehicle Parts Manufacturing	0	0	0	Insf. Data	\$0
Motor Vehicle Manufacturing	0	0	0	Insf. Data	\$0
Electrical Equipment Manufacturing	0	0	0	Insf. Data	\$0
Alumina and Aluminum Production and Processing	0	0	0	Insf. Data	\$0
Steel Product Manufacturing from Purchased Steel	0	0	0	Insf. Data	\$0
Lime and Gypsum Product Manufacturing	0	0	0	Insf. Data	\$0
Pesticide, Fertilizer, and Other Agricultural Chemical Manufacturing	0	0	0	Insf. Data	\$0
Sawmills and Wood Preservation	0	0	0	Insf. Data	\$0
Other Nonmetallic Mineral Product Manufacturing	0	0	0	Insf. Data	\$0

Industry	2015 Jobs	2025 Jobs	Change in Jobs (2015-2025)	% Change	2015 Earnings Per Worker
Textile and Fabric Finishing and Fabric Coating Mills	0	0	0	Insf. Data	\$0
Tobacco Manufacturing	0	0	0	Insf. Data	\$0
Fiber, Yarn, and Thread Mills	0	0	0	Insf. Data	\$0
Fabric Mills	0	0	0	Insf. Data	\$0
Inland Water Transportation	0	0	0	Insf. Data	\$0

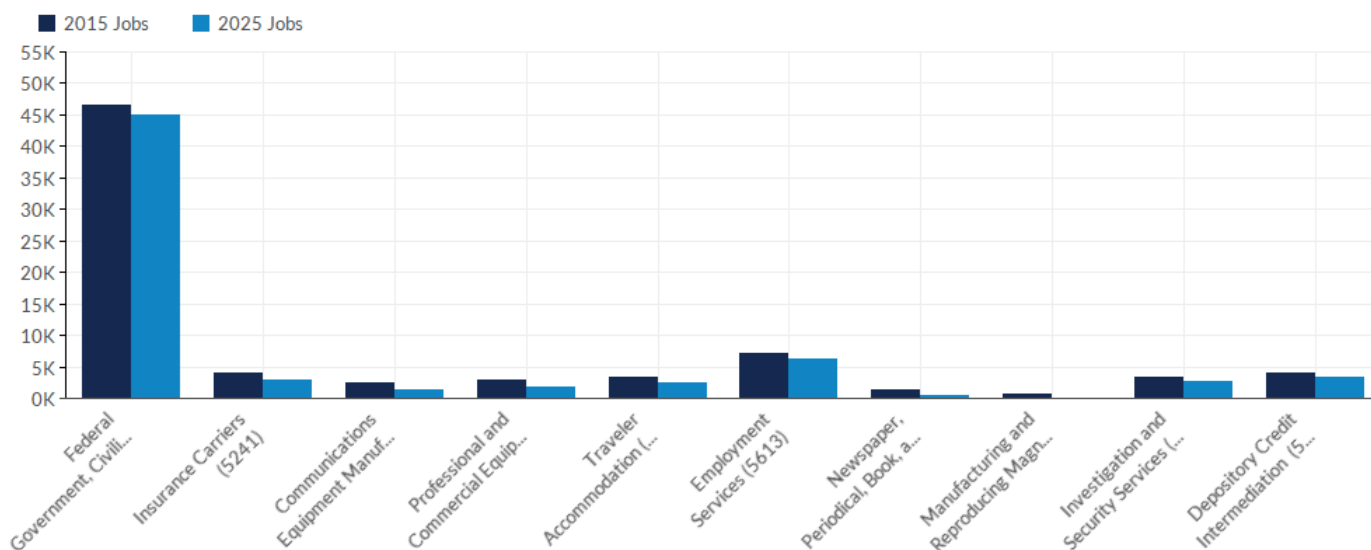
# Lowest Paying Industries



Industry	2015 Jobs	2025 Jobs	Change in Jobs (2015-2025)	% Change	2015 Earnings Per Worker
Support Activities for Crop Production	58	58	0	0%	\$17,240
Sugar and Confectionery Product Manufacturing	50	24	-26	-52%	\$19,233
Shoe Stores	666	552	-114	-17%	\$19,395
Support Activities for Animal Production	107	141	34	32%	\$21,363
Restaurants and Other Eating Places	28,452	30,934	2,482	9%	\$21,660
Clothing Stores	2,988	2,466	-522	-17%	\$23,353
Used Merchandise Stores	567	649	82	14%	\$23,369
Private Households	4,992	4,962	-30	-1%	\$23,663
Drinking Places (Alcoholic Beverages)	610	792	182	30%	\$24,232
Other Transit and Ground Passenger Transportation	303	235	-68	-22%	\$24,425
Other Schools and Instruction	2,816	3,599	783	28%	\$25,127
Amusement Parks and Arcades	85	86	1	1%	\$25,339
RV (Recreational Vehicle) Parks and Recreational Camps	147	158	11	7%	\$26,096
Sporting Goods, Hobby, and Musical Instrument Stores	1,791	1,720	-71	-4%	\$26,978
Drycleaning and Laundry Services	831	876	45	5%	\$27,079
Other Amusement and Recreation Industries	5,732	6,010	278	5%	\$27,105
Department Stores	5,834	5,873	39	1%	\$27,277
Specialty Food Stores	1,207	1,349	142	12%	\$27,661
Nonscheduled Air Transportation	11	10	-1	-9%	\$28,364

Industry	2015 Jobs	2025 Jobs	Change in Jobs (2015-2025)	% Change	2015 Earnings Per Worker
Florists	258	366	108	42%	\$28,452

## Slowest Growing Industries

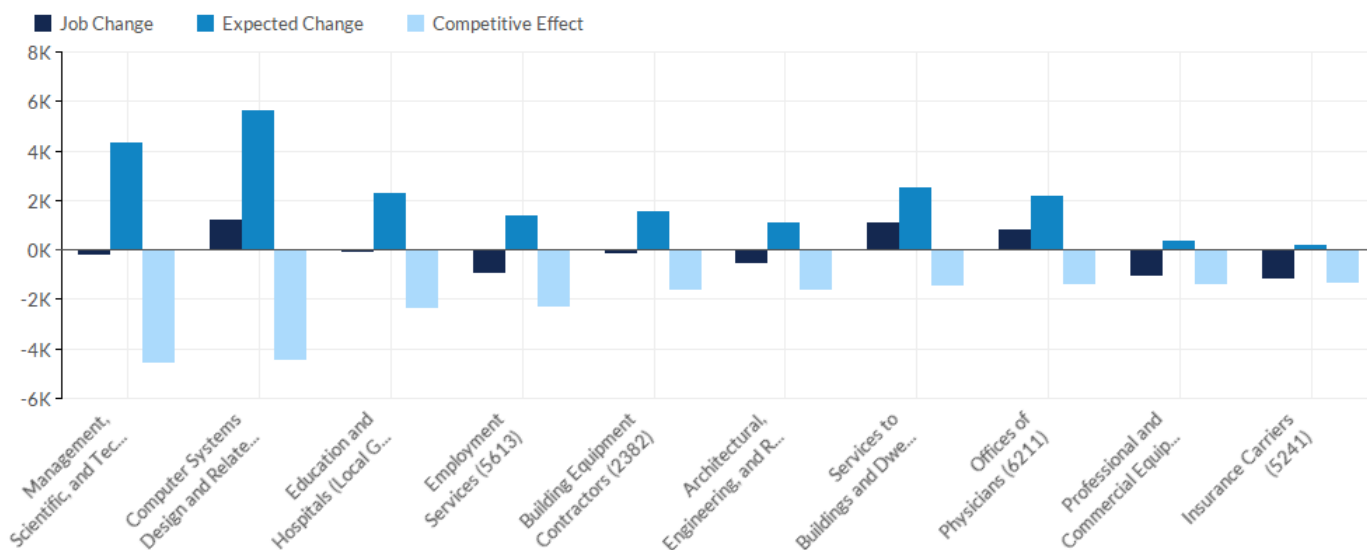


Industry	2015 Jobs	2025 Jobs	Change in Jobs (2015-2025)	% Change	2015 Earnings Per Worker
Federal Government, Civilian	46,554	44,943	-1,611	-3%	\$143,618
Insurance Carriers	4,009	2,877	-1,132	-28%	\$122,676
Communications Equipment Manufacturing	2,406	1,354	-1,053	-44%	\$125,650
Professional and Commercial Equipment and Supplies Merchant Wholesalers	2,806	1,804	-1,001	-36%	\$167,716
Traveler Accommodation	3,424	2,482	-942	-28%	\$45,237
Employment Services	7,143	6,247	-896	-13%	\$60,720
Newspaper, Periodical, Book, and Directory Publishers	1,323	505	-817	-62%	\$102,747
Manufacturing and Reproducing Magnetic and Optical Media	778	34	-744	-96%	\$208,282
Investigation and Security Services	3,308	2,768	-540	-16%	\$50,976
Depository Credit Intermediation	3,973	3,434	-539	-14%	\$86,240
Clothing Stores	2,988	2,466	-523	-17%	\$23,353
Architectural, Engineering, and Related Services	6,369	5,873	-496	-8%	\$110,233
Business Support Services	948	505	-443	-47%	\$59,532
Data Processing, Hosting, and Related Services	1,021	587	-434	-42%	\$124,438
Office Supplies, Stationery, and Gift Stores	769	379	-390	-51%	\$33,630
Gasoline Stations	1,109	726	-383	-35%	\$34,840

Industry	2015 Jobs	2025 Jobs	Change in Jobs (2015-2025)	% Change	2015 Earnings Per Worker
Special Food Services	1,568	1,209	-360	-23%	\$35,763
Household Appliances and Electrical and Electronic Goods Merchant Wholesalers	509	153	-356	-70%	\$96,529
Nursing Care Facilities (Skilled Nursing Facilities)	4,682	4,326	-356	-8%	\$46,214
Activities Related to Real Estate	5,052	4,702	-350	-7%	\$87,241



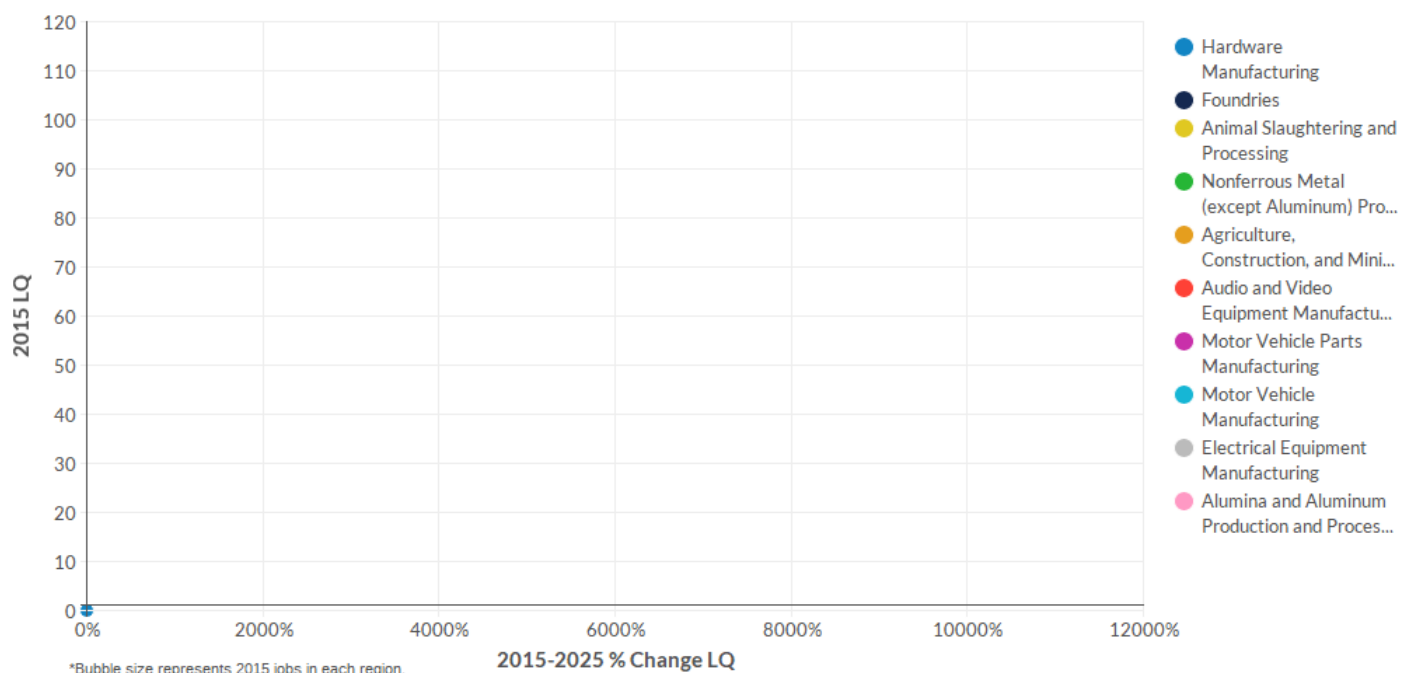
## Least Competitive Industries



Industry	Job Change	Ind Mix Effect	Nat Growth Effect	Expected Change	Competitive Effect	2015 Earnings Per Worker
Management, Scientific, and Technical Consulting Services	-169	2,898	1,433	4,331	-4,500	\$119,280
Computer Systems Design and Related Services	1,194	3,570	2,043	5,613	-4,418	\$136,979
Education and Hospitals (Local Government)	-22	-910	3,190	2,280	-2,302	\$84,104
Employment Services	-896	545	824	1,369	-2,265	\$60,720
Building Equipment Contractors	-94	706	806	1,512	-1,606	\$76,608
Architectural, Engineering, and Related Services	-496	372	734	1,106	-1,602	\$110,233
Services to Buildings and Dwellings	1,097	872	1,614	2,486	-1,389	\$33,893
Offices of Physicians	805	939	1,246	2,185	-1,380	\$108,461
Professional and Commercial Equipment and Supplies Merchant Wholesalers	-1,001	9	324	333	-1,334	\$167,716
Insurance Carriers	-1,132	-289	462	173	-1,305	\$122,676
Scientific Research and Development Services	624	468	1,431	1,899	-1,276	\$108,968
Traveler Accommodation	-942	-75	395	320	-1,262	\$45,237
Activities Related to Real Estate	-350	231	583	814	-1,164	\$87,241
Investigation and Security Services	-540	168	381	549	-1,090	\$50,976
Nursing Care Facilities (Skilled Nursing Facilities)	-356	127	540	667	-1,023	\$46,214
Restaurants and Other Eating Places	2,483	193	3,281	3,474	-991	\$21,660

Industry	Job Change	Ind Mix Effect	Nat Growth Effect	Expected Change	Competitive Effect	2015 Earnings Per Worker
Agencies, Brokerages, and Other Insurance Related Activities	-298	131	490	621	-918	\$103,034
Clothing Stores	-523	23	345	368	-890	\$23,353
Elementary and Secondary Schools	-76	62	752	814	-890	\$54,892
Local Government, Excluding Education and Hospitals	159	-785	1,824	1,039	-881	\$77,150

# Lowest Industry Location Quotient



Industry	2015 Jobs	2025 Jobs	% Change	2015 LQ	2025 LQ	% Change LQ	2015 Earnings Per Worker
Hardware Manufacturing	0	0	0%	0.00	0.00	0%	\$0
Foundries	0	0	0%	0.00	0.00	0%	\$0
Animal Slaughtering and Processing	0	0	0%	0.00	0.00	0%	\$0
Nonferrous Metal (except Aluminum) Production and Processing	0	0	0%	0.00	0.00	0%	\$0
Agriculture, Construction, and Mining Machinery Manufacturing	0	0	0%	0.00	0.00	0%	\$0
Audio and Video Equipment Manufacturing	0	0	0%	0.00	0.00	0%	\$0
Motor Vehicle Parts Manufacturing	0	0	0%	0.00	0.00	0%	\$0
Motor Vehicle Manufacturing	0	0	0%	0.00	0.00	0%	\$0
Electrical Equipment Manufacturing	0	0	0%	0.00	0.00	0%	\$0
Alumina and Aluminum Production and Processing	0	0	0%	0.00	0.00	0%	\$0
Steel Product Manufacturing from Purchased Steel	0	0	0%	0.00	0.00	0%	\$0
Lime and Gypsum Product Manufacturing	0	0	0%	0.00	0.00	0%	\$0
Pesticide, Fertilizer, and Other Agricultural Chemical Manufacturing	0	0	0%	0.00	0.00	0%	\$0
Sawmills and Wood Preservation	0	0	0%	0.00	0.00	0%	\$0
Other Nonmetallic Mineral Product Manufacturing	0	0	0%	0.00	0.00	0%	\$0

Industry	2015 Jobs	2025 Jobs	% Change	2015 LQ	2025 LQ	% Change LQ	2015 Earnings Per Worker
Textile and Fabric Finishing and Fabric Coating Mills	0	0	0%	0.00	0.00	0%	\$0
Tobacco Manufacturing	0	0	0%	0.00	0.00	0%	\$0
Fiber, Yarn, and Thread Mills	0	0	0%	0.00	0.00	0%	\$0
Fabric Mills	0	0	0%	0.00	0.00	0%	\$0
Inland Water Transportation	0	0	0%	0.00	0.00	0%	\$0

# Appendix A - Data Sources and Calculations

## Industry Data

EMSI industry data have various sources depending on the class of worker. (1) For QCEW Employees, EMSI primarily uses the QCEW (Quarterly Census of Employment and Wages), with supplemental estimates from County Business Patterns and Current Employment Statistics. (2) Non-QCEW employees data are based on a number of sources including QCEW, Current Employment Statistics, County Business Patterns, BEA State and Local Personal Income reports, the National Industry-Occupation Employment Matrix (NIOEM), the American Community Survey, and Railroad Retirement Board statistics. (3) Self-Employed and Extended Proprietor classes of worker data are primarily based on the American Community Survey, Nonemployer Statistics, and BEA State and Local Personal Income Reports. Projections for QCEW and Non-QCEW Employees are informed by NIOEM and long-term industry projections published by individual states.

## State Data Sources

This report uses state data from the following agencies: Maryland Department of Labor, Licensing and Regulation, Office of Labor Market Analysis and Information