

MONTGOMERY COLLEGE
Office of Facilities

December 19, 2001

ASBESTOS MATERIAL SURVEY REPORT
ROCKVILLE CAMPUS
ART BUILDING

AMENDMENT #1

DATE: December 19, 2001

In conjunction with the renovation of the building, all asbestos-containing materials located in the Art Building have been removed except for the following:

- **Resilient Floor Cover Adhesive (black in color)**
This material is located under new floor coverings and adhesives that have been installed as part of the renovation of the building.
- **Adhesive (black and white in color) on Fiberglass Pipe Insulation**
This material remains in the corner ceiling overhangs located at the third floor. The piping upon which this material is installed has been abandoned but remains in place.

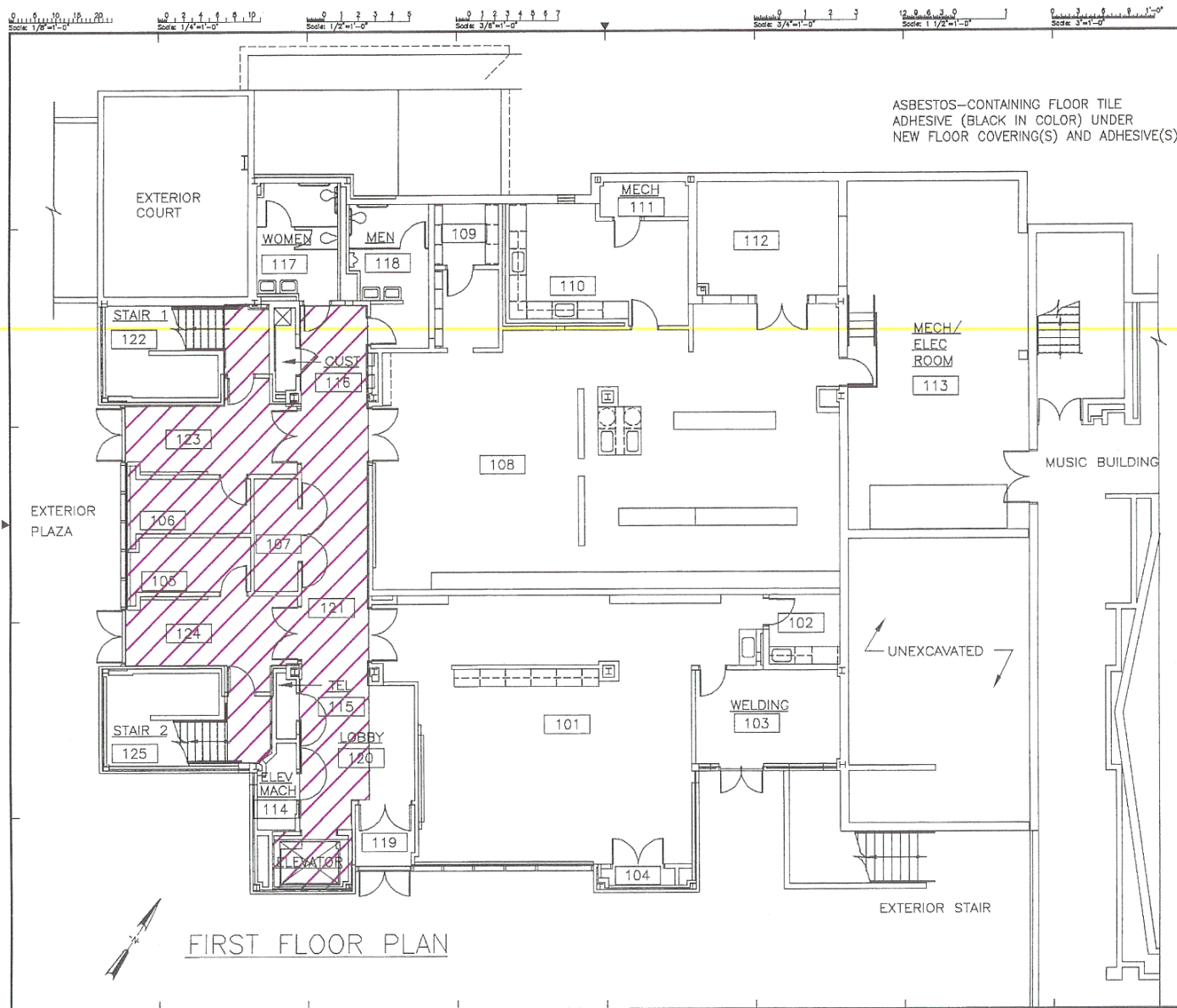
The asbestos-containing materials were removed as of April, 1999 by:

BARCO Enterprises, Inc.
P.O. Box 0074
11200 Pulaski Hwy.
White Marsh, MD 21164

Contract No. 343
Amount of Contract : \$89,044.60



Sharon L. Draper
AHERA/ASHERA Inspector/Mgmt Planner
Tufts University
Certification No. 8804-01-012
Aerosol Monitoring & Analysis, Inc.
Certification No. 057058



ASBESTOS-CONTAINING FLOOR TILE
ADHESIVE (BLACK IN COLOR) UNDER
NEW FLOOR COVERING(S) AND ADHESIVE(S)



Montgomery
College
Central Administration
Office of Facilities
600 Hungerford Drive
Rockville, Md 20850
Telephone: (301)-251-7383

Drawn By:	Chd By:
Designed By:	Approved By:

Notes

No.	Description	Date
Revisions		
Location Map		

Project Title
Art Building
First Floor

Drawing Title
FLOOR COVER
ADHESIVE

Scale: NOT TO SCALE

Scale: NOT TO SCALE	
Project No.	Drawing Number

Date: 12/21/01

ADH-1

P/ Master Drawings / Revised Master Drawings / Rockville Revised / R-Art / Art asbestos.dwg

0 1 2 3 4 5 6 7 8 9 10 11 12 13 14 15 16 17 18 19 20
Scale: 1/8"=1'-0"

0 1 2 3 4 5 6 7 8 9 10 11 12 13 14 15 16 17 18 19 20
Scale: 1/4"=1'-0"

0 1 2 3 4 5 6 7 8 9 10 11 12 13 14 15 16 17 18 19 20
Scale: 1/2"=1'-0"

0 1 2 3 4 5 6 7 8 9 10 11 12 13 14 15 16 17 18 19 20
Scale: 3/8"=1'-0"

0 1 2 3 4 5 6 7 8 9 10 11 12 13 14 15 16 17 18 19 20
Scale: 3/4"=1'-0"

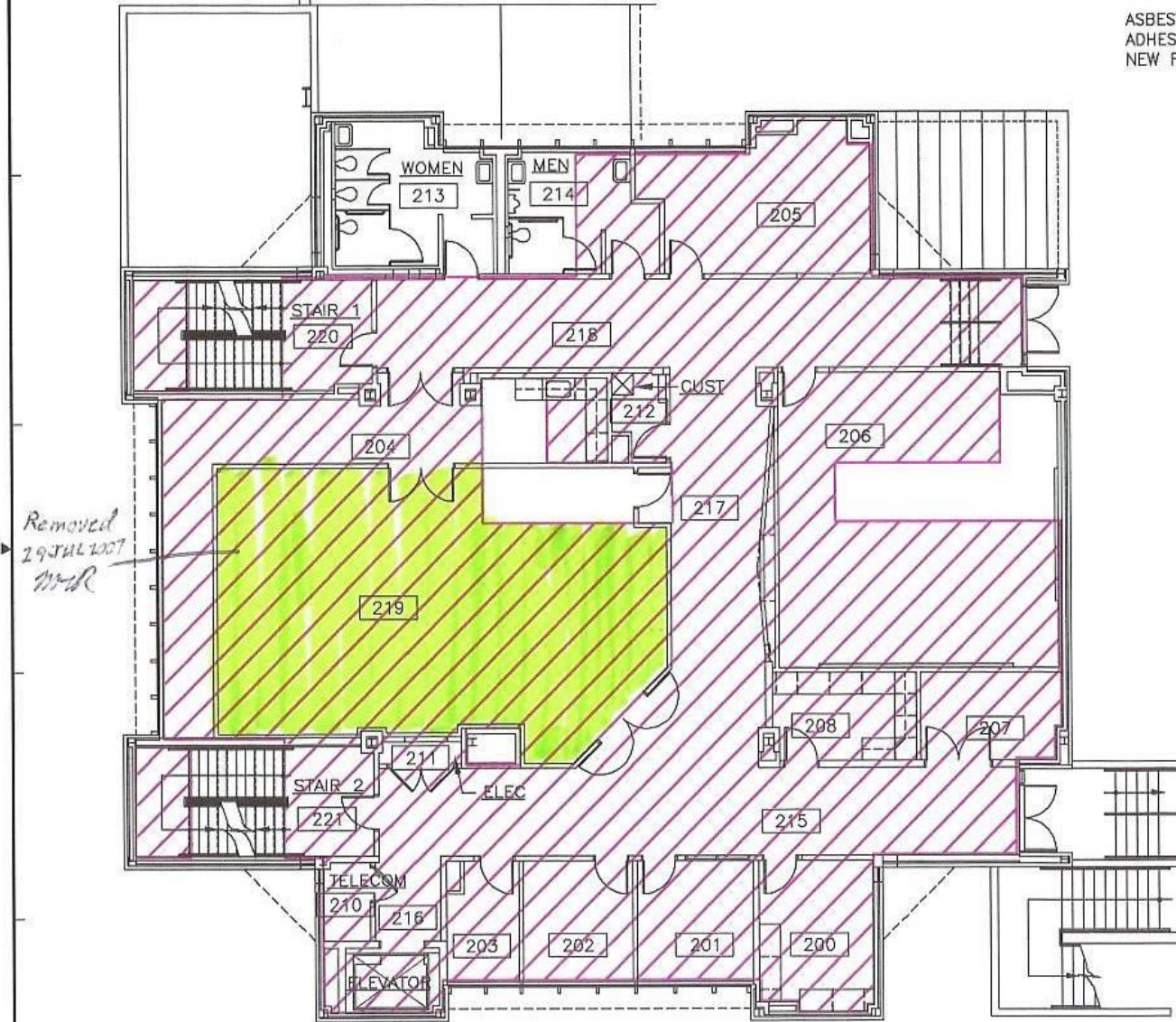
0 1 2 3 4 5 6 7 8 9 10 11 12 13 14 15 16 17 18 19 20
Scale: 1 1/2"=1'-0"

0 1 2 3 4 5 6 7 8 9 10 11 12 13 14 15 16 17 18 19 20
Scale: 3"=1'-0"

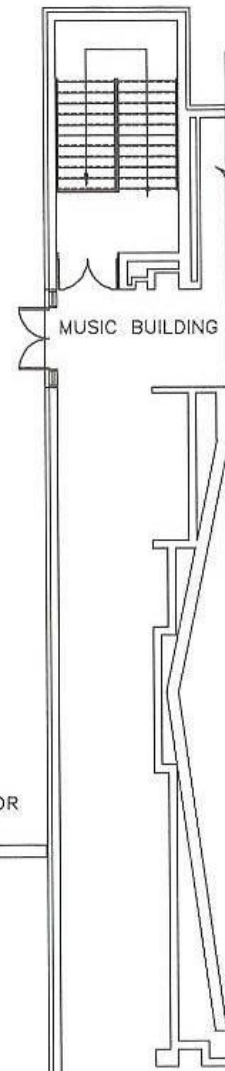
ASBESTOS-CONTAINING FLOOR TILE
ADHESIVE (BLACK IN COLOR) UNDER
NEW FLOOR COVERING(S) AND ADHESIVE(S)

Montgomery College
Central Administration
Office of Facilities
600 Hungerford Drive
Rockville, MD 20850
Telephone: (301)-251-7353

Drawn By: CM: By:
Designed By: Approved By:
Notes:



SECOND FLOOR PLAN



No.	Description	Date
1	Revisions	
2	Location Map	

Project Title
Art Building
Second Floor

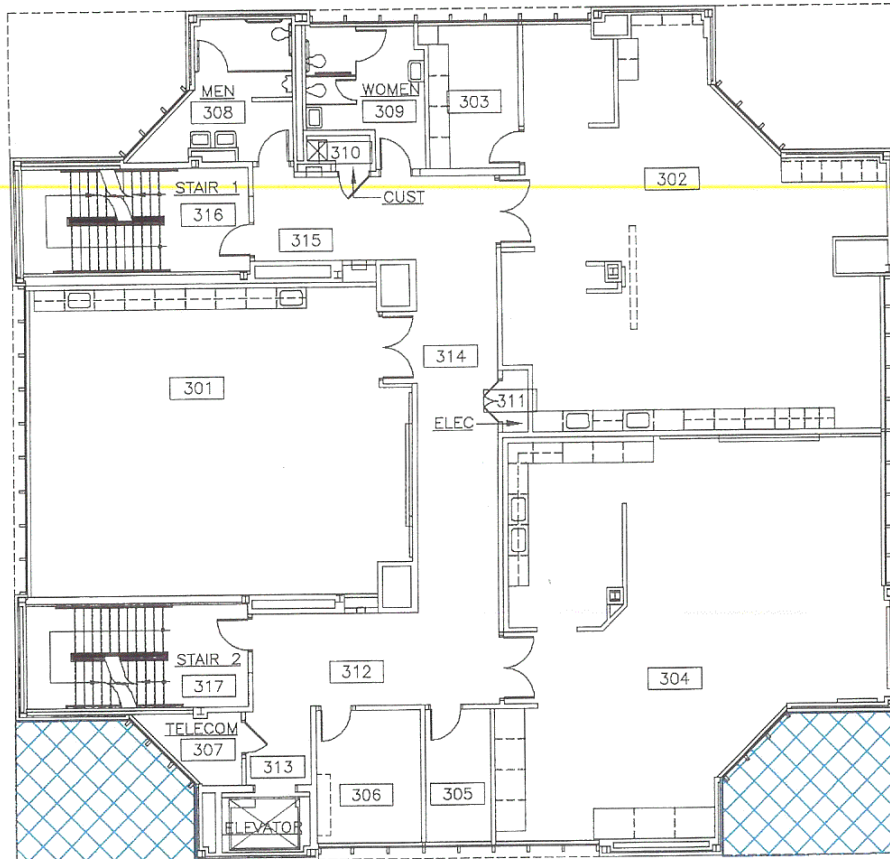
Drawing Title
FLOOR COVER
ADHESIVE

Scale: NOT TO SCALE

Project No. Drawing Number

Date: 12/21/01

ADH-2



THIRD FLOOR PLAN

ASBESTOS-CONTAINING ADHESIVE SEALANT (BLACK & WHITE IN COLOR) ON FIBERGLASS PIPE INSULATION. PIPING HAS BEEN ABANDONED AND LEFT IN PLACE.



Central Administration
Office of Facilities
600 Montgomery Drive
Rockville, Md. 20850
Telephone: (301)-251-7363

Drawn By: _____
Designed By: _____
Name: _____

Old By: _____
Approved By: _____

P/ Master Drawings / Revised Master Drawings / Rockville Revised / R-Art / Art_asbestos.dwg

Project Title
Art Building
Third Floor

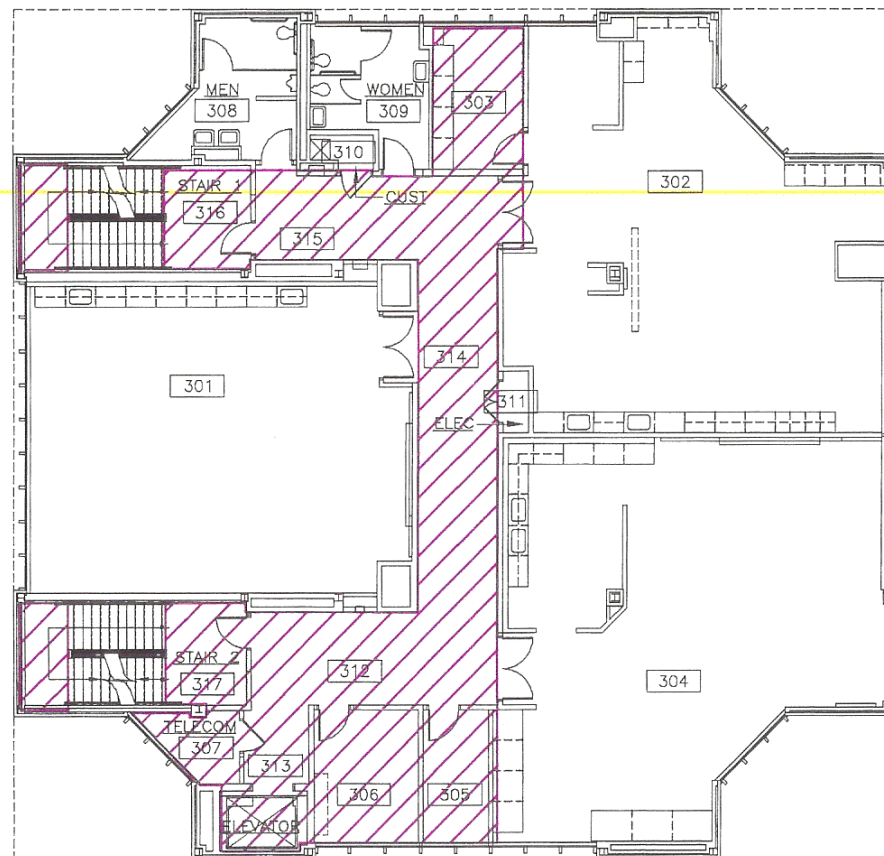
Drawing Title
ADHESIVE SEALANT ON
PIPE INSULATION

Scale: NOT TO SCALE

Project No. _____
Drawing Number
ASPI-1

Date
12/21/01

300 Rockville, Md.



ASBESTOS-CONTAINING FLOOR TILE
ADHESIVE (BLACK IN COLOR) UNDER
NEW FLOOR COVERING(S) AND ADHESIVE(S)



Montgomery College
Central Administration
Office of Facilities
800 Hungerford Drive
Rockville, Md 20850
Telephone: (301)-251-7363

Drawn By:	Chd By:
Designed By:	Approved By:
Notes	

[illegible]

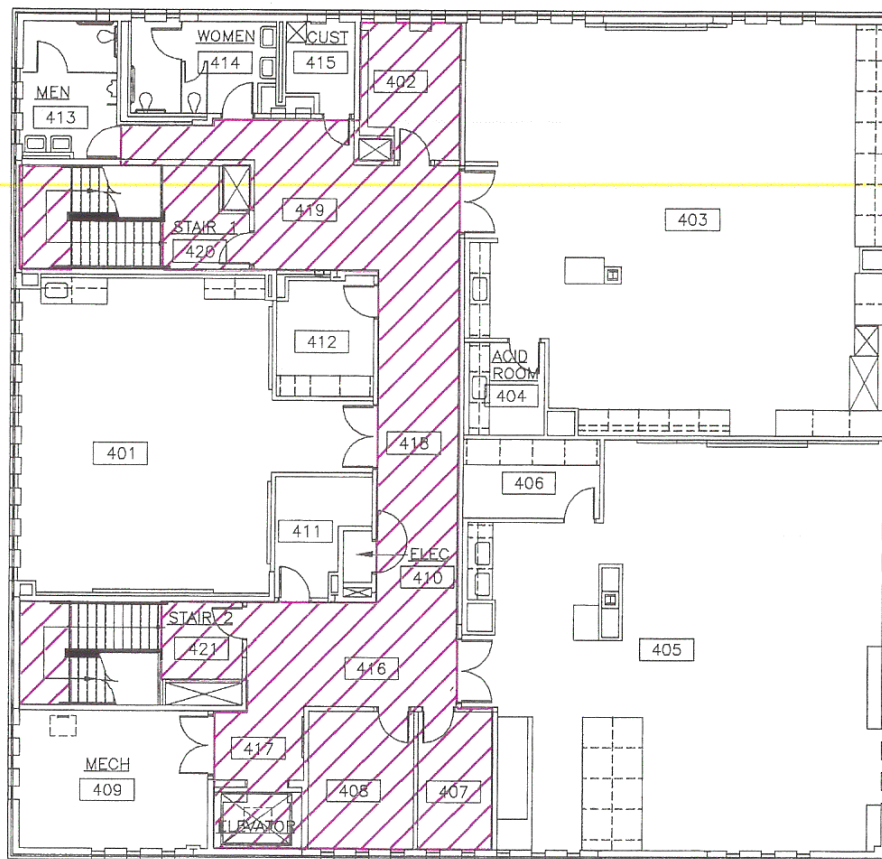
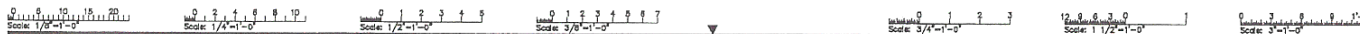
Project Title	Art Building Third Floor
---------------	-----------------------------

Drawing Title
FLOOR COVER
ADHESIVE

Scale: NOT TO SCALE	
Project No.	Drawing Number

Date 12/21/01 ADH-3

P/ Master Drawings / Revised Master Drawings / Rockville Revised / R-Art / Art_asbestos.dwg



ASBESTOS-CONTAINING FLOOR TILE
ADHESIVE (BLACK IN COLOR) UNDER
NEW FLOOR COVERING(S) AND ADHESIVE(S)

FOURTH FLOOR PLAN



Montgomery
College

Central Administration
Office of Facilities
800 Hungerford Drive
Rockville, MD 20850
Telephone: (301) 251-7363

Drawn By:	Old By:
Designed By:	Approved By:
Date:	

No.	Description	Date

Project Title
Art Building
Fourth Floor

Drawing Title
FLOOR COVER
ADHESIVE

Scale: NOT TO SCALE

Project No.	Drawing Number
Date	ADH-4
12/21/01	

P/ Master Drawings / Revised Master Drawings / Rockville Revised / R-Art / Art_asbestos.dwg