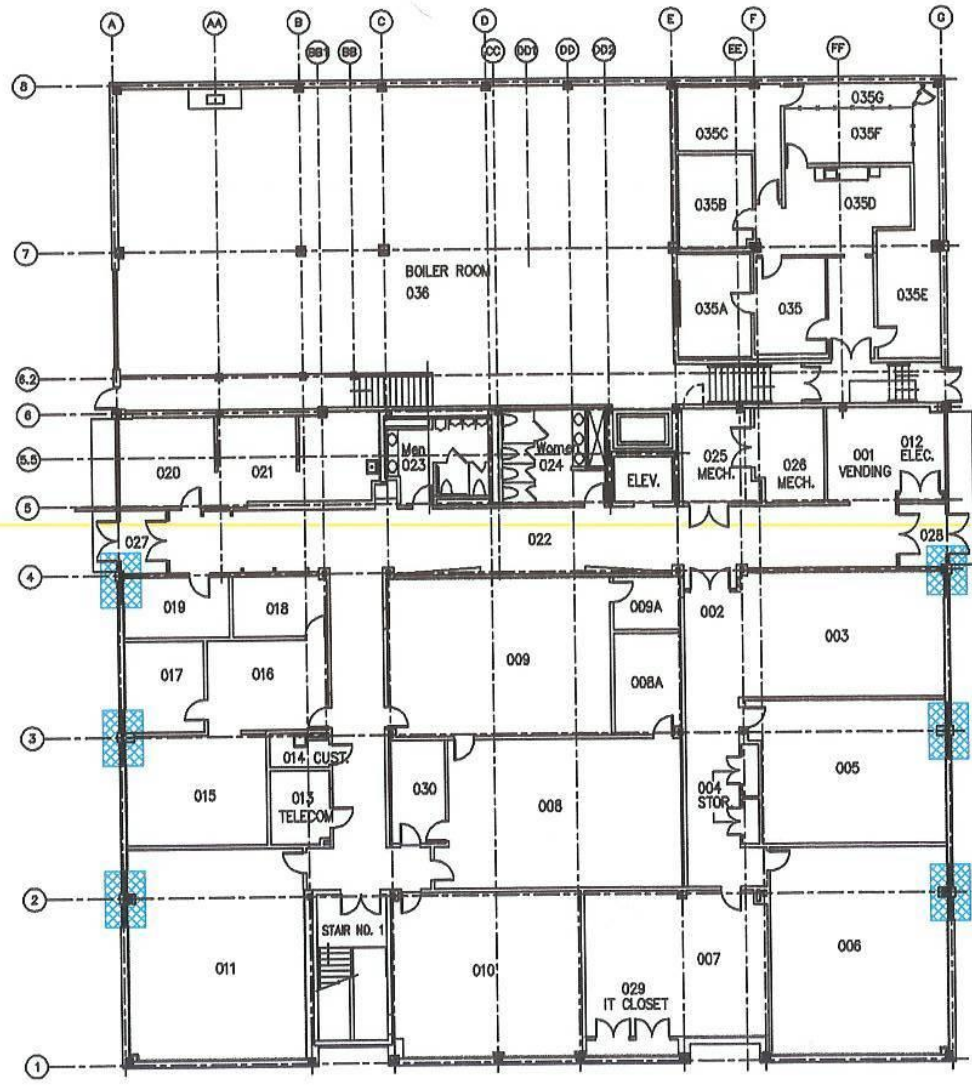



Rockville Campus – Humanities Building  
Asbestos Survey map update November 2001

The Humanities Building was renovated in 2001. All identified ACM was removed with the exception of sprayed-on fireproofing on perimeter structural supports and floor tile adhesive throughout the building.



ASBESTOS-CONTAINING SPRAY-ON FIREPROOFING LOCATED BEHIND VERTICAL STRUCTURAL STEEL (BETWEEN REAR OF COLUMN AND OUTSIDE WALL). UNABLE TO REMOVE DURING RENOVATION, ENCLOSED WITHIN HILTI FOAM.

SPRAY ON FIREPROOFING (OVERSPRAY) LOCATED UNDER WINDOW SILL (SPECIFICALLY IN THE SPACE BETWEEN INTERIOR CMU AND EXTERIOR PLASTER PANEL BELOW WINDOW) AIR SPACE ENCLOSED WITH HILTI FOAM.



**Montgomery College**

Central Administration  
College of Potomac  
600 Hampshire Drive  
Baltimore, MD 21204  
Telephone: (301) 251-7203

Drawn By: M. Rogers	Chd. By:
Designed By:	Approved By:
Title:	

No.	Description	Date

Project Title: Rockville Campus

**Humanities Building**

Drawing Title: Ground Floor Plan Spray-On Fireproofing

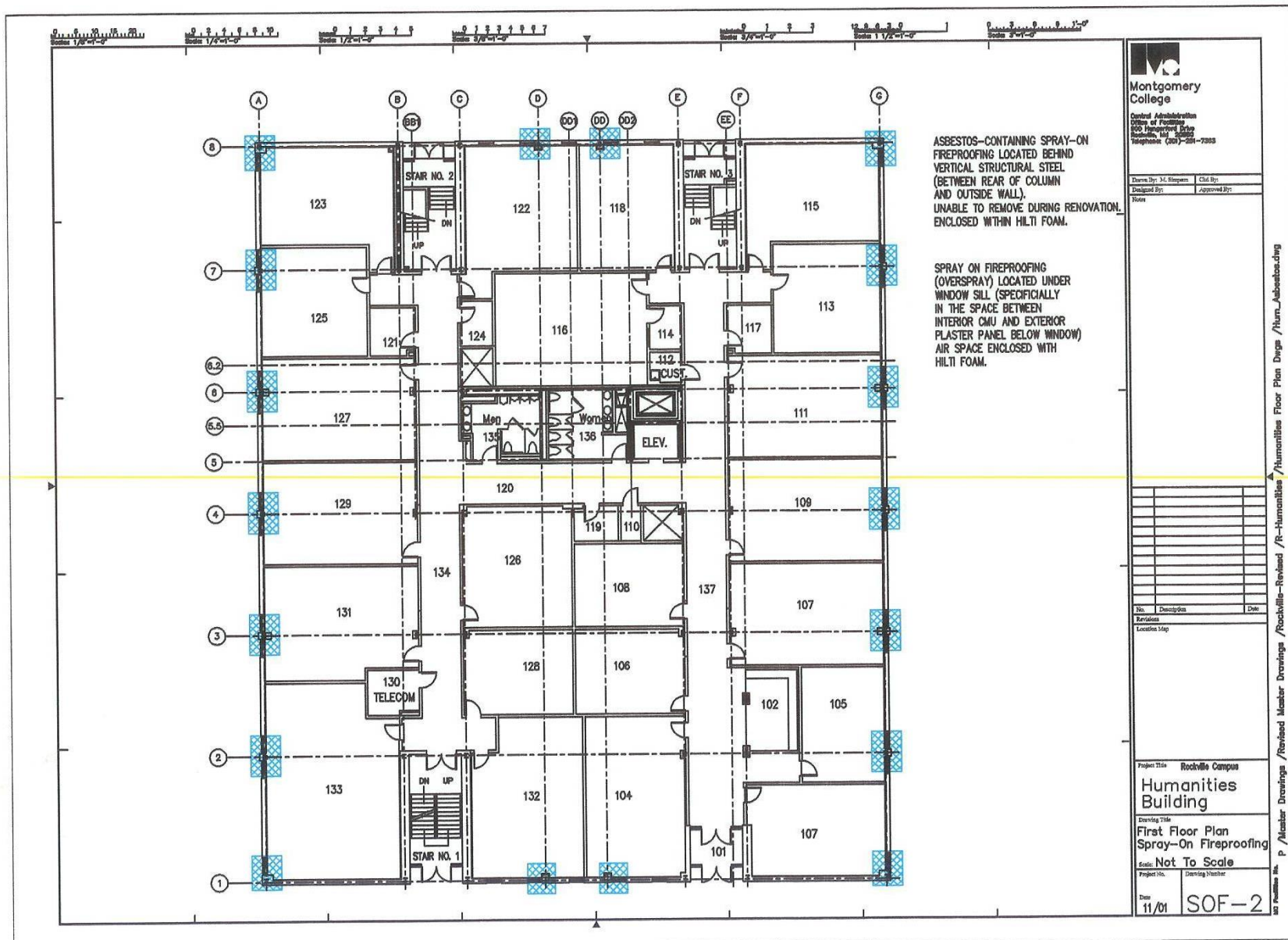
Scale: **Not To Scale**

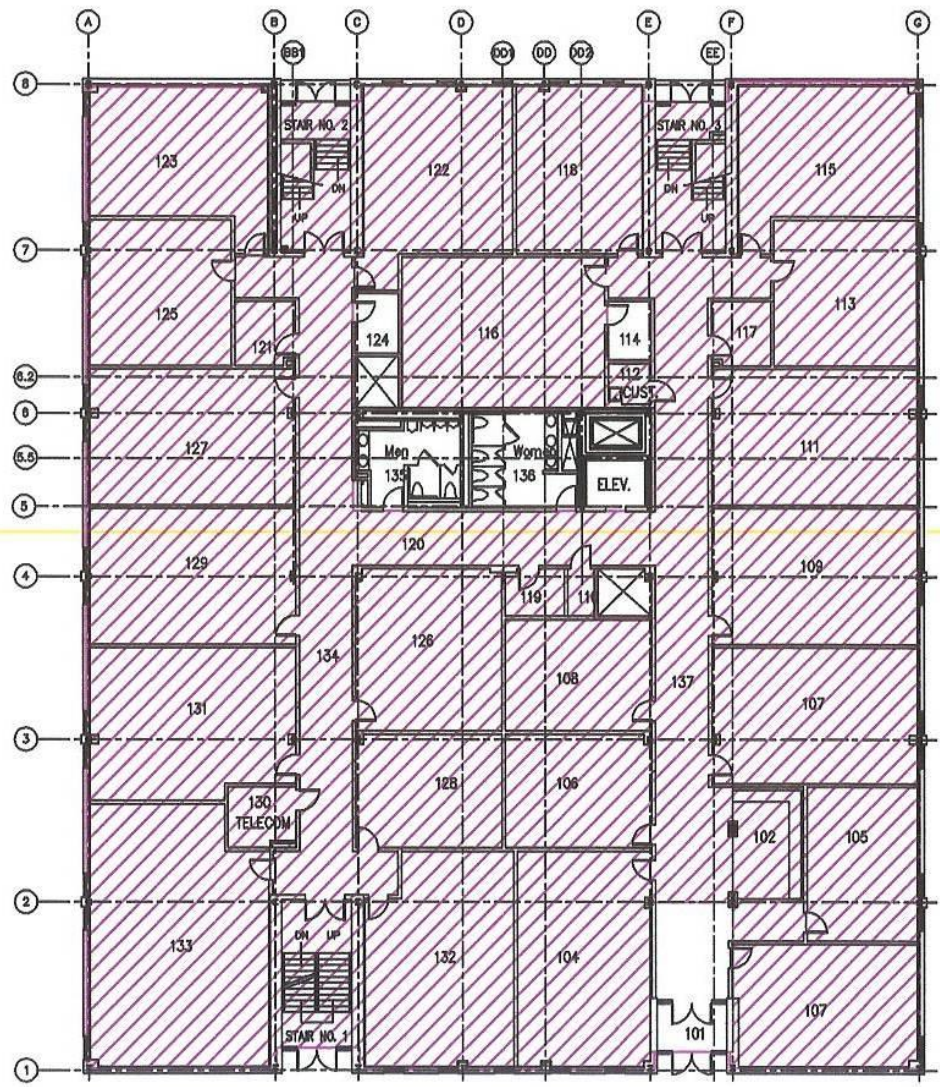
Project No. \_\_\_\_\_ Drawing Number \_\_\_\_\_

Date: 11/01 **SOF-1**

P / Master Drawings / Revised Master Drawings / Rockville-Revised / R-Humanities / Humanities Floor Plan Dwg / Hum-Asbestos.dwg

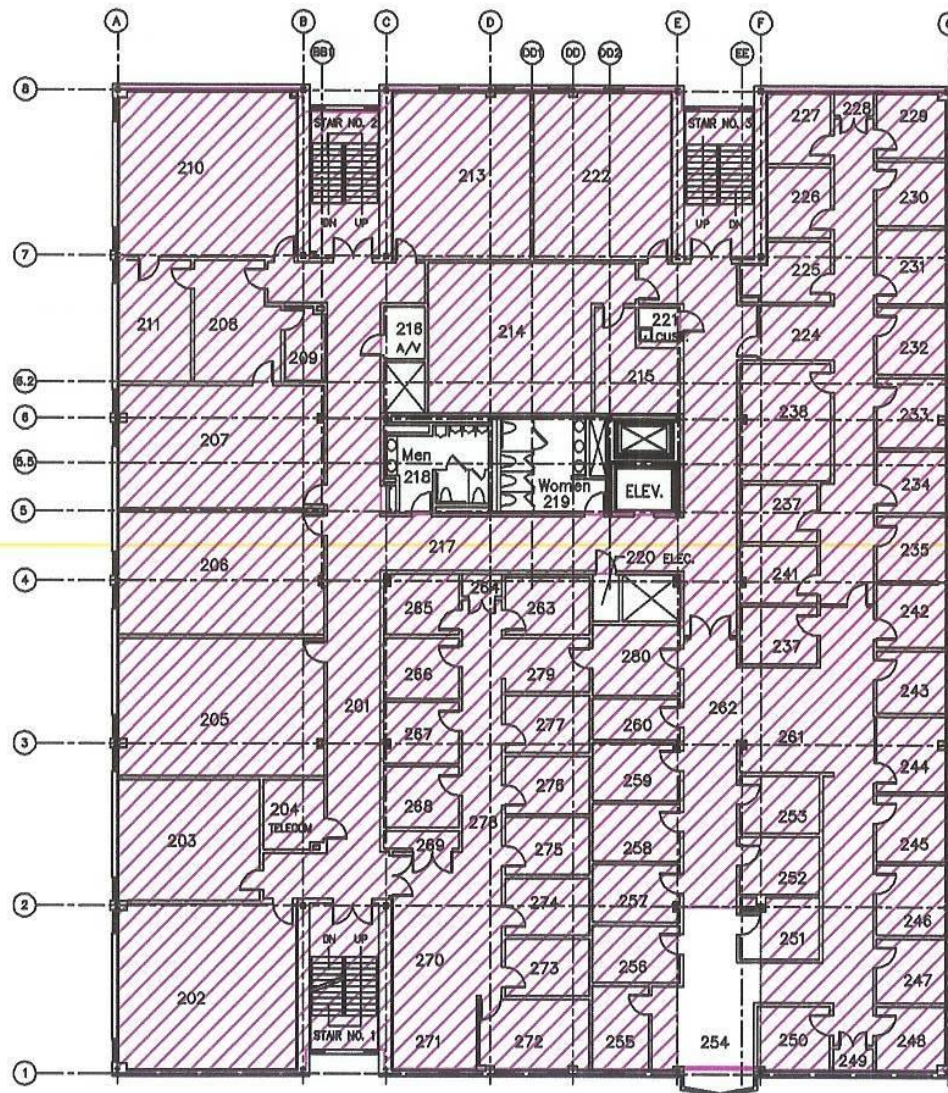




[illegible]

© Penzance Inc. P /Master Drawings /Revised Master Drawings /Rockville—Revised /R—Humanities /Humanities Floor Plan Dwg /Hum asbestos.dwg





Asbestos- Containing Floor Tile  
Adhesive (black in color)  
Under new floor covering(s)  
and adhesive(s)



Central Administration  
Office of Facilities  
100 University Drive  
Rockville, MD 20850  
Telephone (301) 251-7222

Drawn By: M. Higgins  
Designed By: Approved By:  
Notes

Notes

Notes

Notes

Notes

Notes

Notes

Notes

Notes

Notes

Notes

Notes

Notes

Notes

Notes

Notes

Notes

Notes

Notes

Notes

Notes

Notes

Notes

Notes

Notes

Notes

Notes

Notes

Project Title: Rockville Campus  
Humanities Building

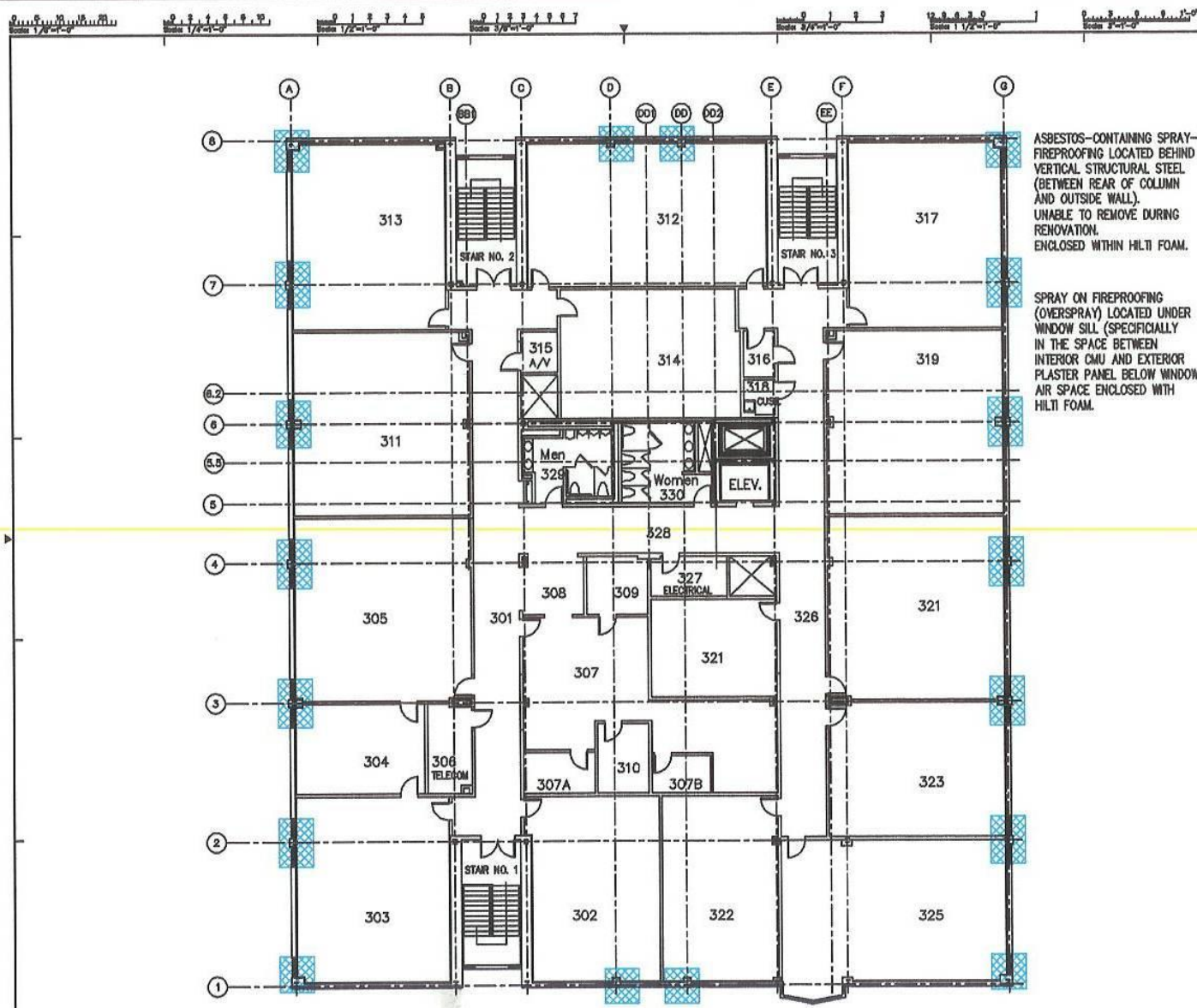
Drawing Title:  
Second Floor Plan  
Floor Cover Adhesive

Scale: Not To Scale

Project No.: Drawing Number

Date: 11/01 ADH-3

Rockville Campus / Revised Master Drawings / Rockville-Revised / R-Humanities / Hum-Floor Plan Dwg / Hum-asbestos.dwg



SPRAY ON FIREPROOFING (OVERSPRAY) LOCATED UNDER WINDOW SILL (SPECIFICALLY IN THE SPACE BETWEEN INTERIOR CMU AND EXTERIOR PLASTER PANEL BELOW WINDOW) AIR SPACE ENCLOSED WITH HILTI FOAM.



Central Administration  
Office of Facilities  
800 Hangerford Drive  
Rockville, Md. 20850  
Telephone: (301)-271-7353

Drawn By: M. Virapen	Chd By:
Designed By:	Approved By:
Notes	

[illegible]

No.	Description	Date
Revisions		
Location Map		

[illegible]

Project Title **Rockville Campus**  
**Humanities**  
**Building**

### Third Floor Plan

#### Spray-On Fireproofing

Scale: **Not To Scale**

Date: 11/01 SOF-4

30 Feet/Sec. Max. p /Master Dimensions /Revised Master Drawings /Rockville-Revised /R-Humanities /Hum-Floor Plan Desc /Hum-asbestos.dwg

