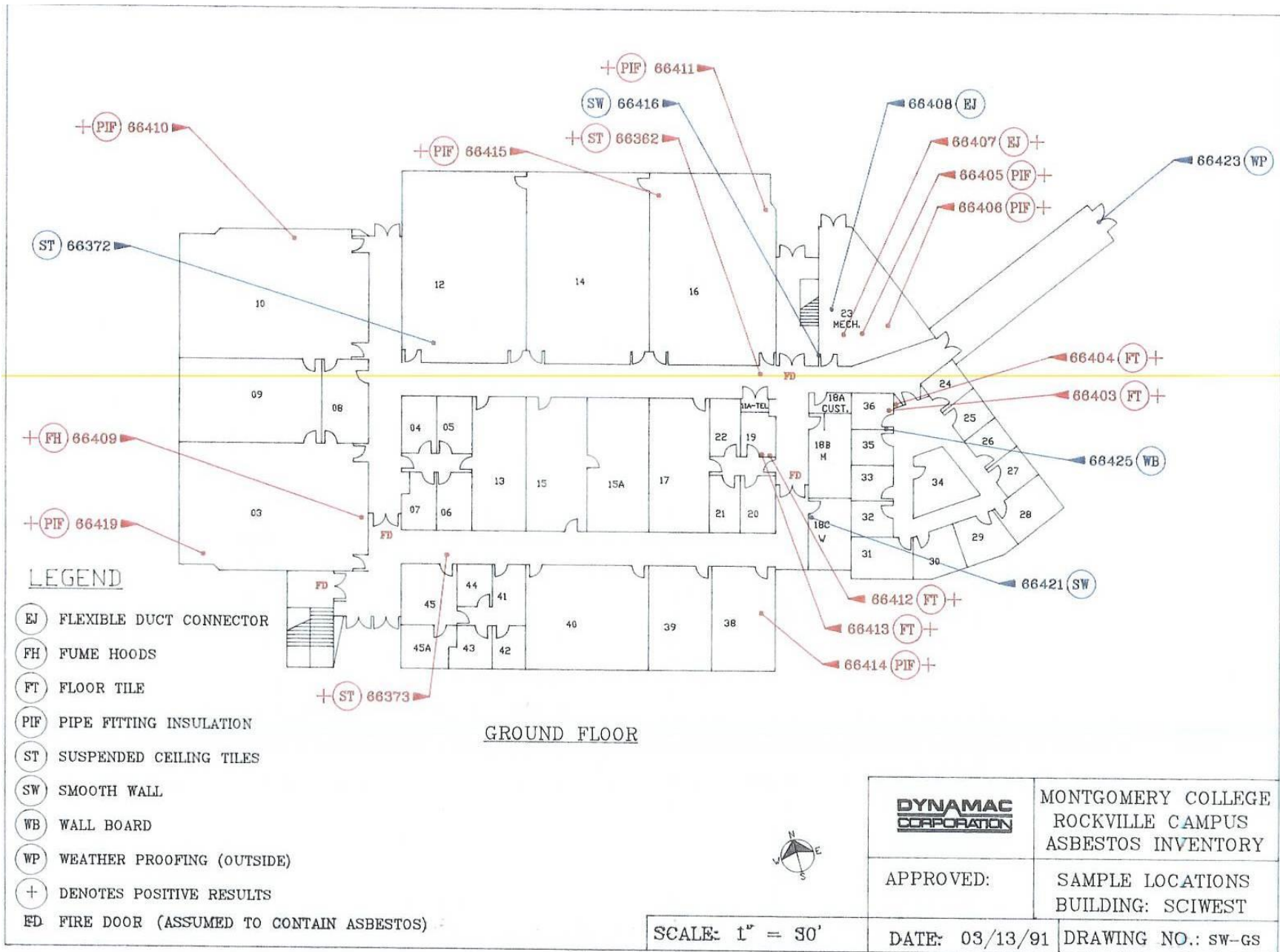


Rockville Campus – Science West
Asbestos Survey map updates May 2007

Floor	Material
Ground Floor	Sample Map
	Suspended Ceiling Tiles (Removed 1992)
	Pipe Fitting Insulation (Removed 1991 and 1992)
	Flexible Duct Connectors
	Floor Tile and Floor Tile Mastic
	Smooth Wall and Ceiling Plaster
	Transite Boards in Fume Hoods
1 st Floor	Sample Map
	Suspended Ceiling Tiles (Removed 1992)
	Pipe Fitting Insulation
	Floor Tile and Floor Tile Mastic
	Transite Boards in Fume Hoods
	Smooth Wall and Ceiling Plaster



ALL ACM
SUSPENDED CEILING TILES REMOVED 08/13/92



REVISED: 08/13/92

GROUND FLOOR
AREAS POSITIVE FOR SUSPENDED CEILING TILES



SCALE: 1" = 30'

DYNAMAC
CORPORATION

MONTGOMERY COLLEGE
ROCKVILLE CAMPUS
ASBESTOS INVENTORY

APPROVED:

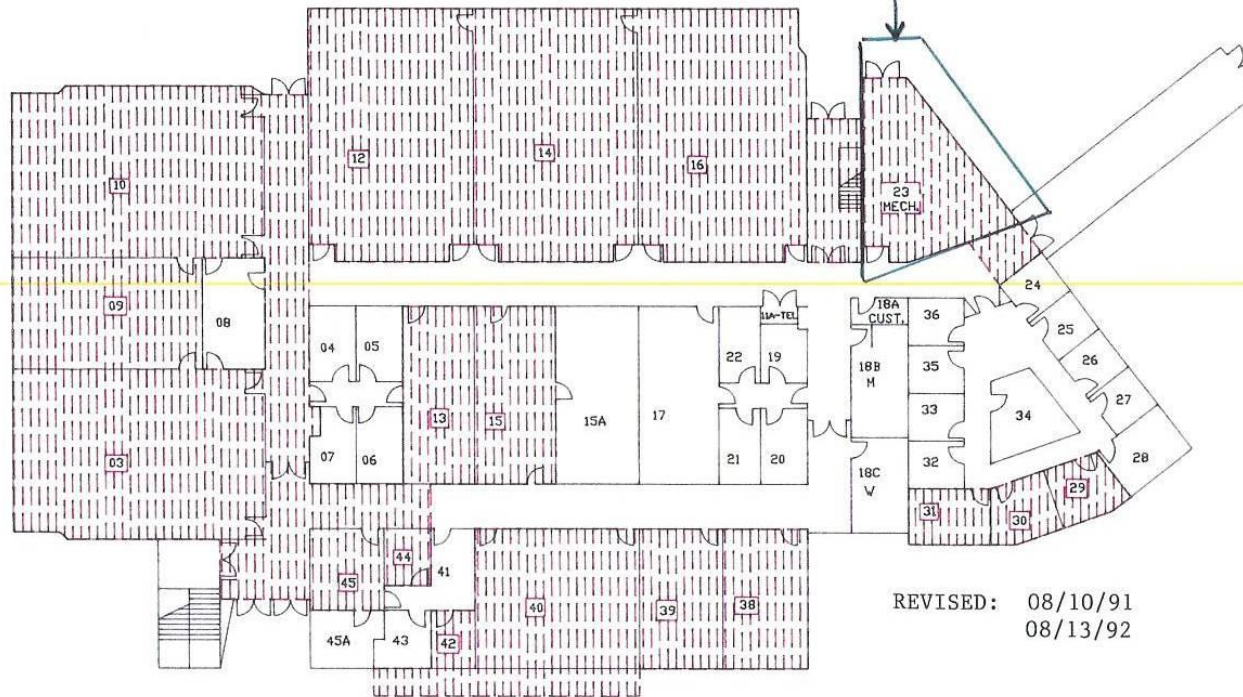
SAMPLE LOCATIONS
BUILDING: SCIWEST

DATE: 03/13/91

DRAWING NO.: SW-GST

ALL ACM PIPE FITTING INSULATION
REMOVED 08/13/92

REMOVED 8/10/91



REVISED: 08/10/91
08/13/92

GROUND FLOOR
AREAS POSITIVE FOR PIPE FITTING INSULATION

REVISED: 08/10/91
08/13/92



SCALE: 1" = 30'

DYNAMAC
CORPORATION

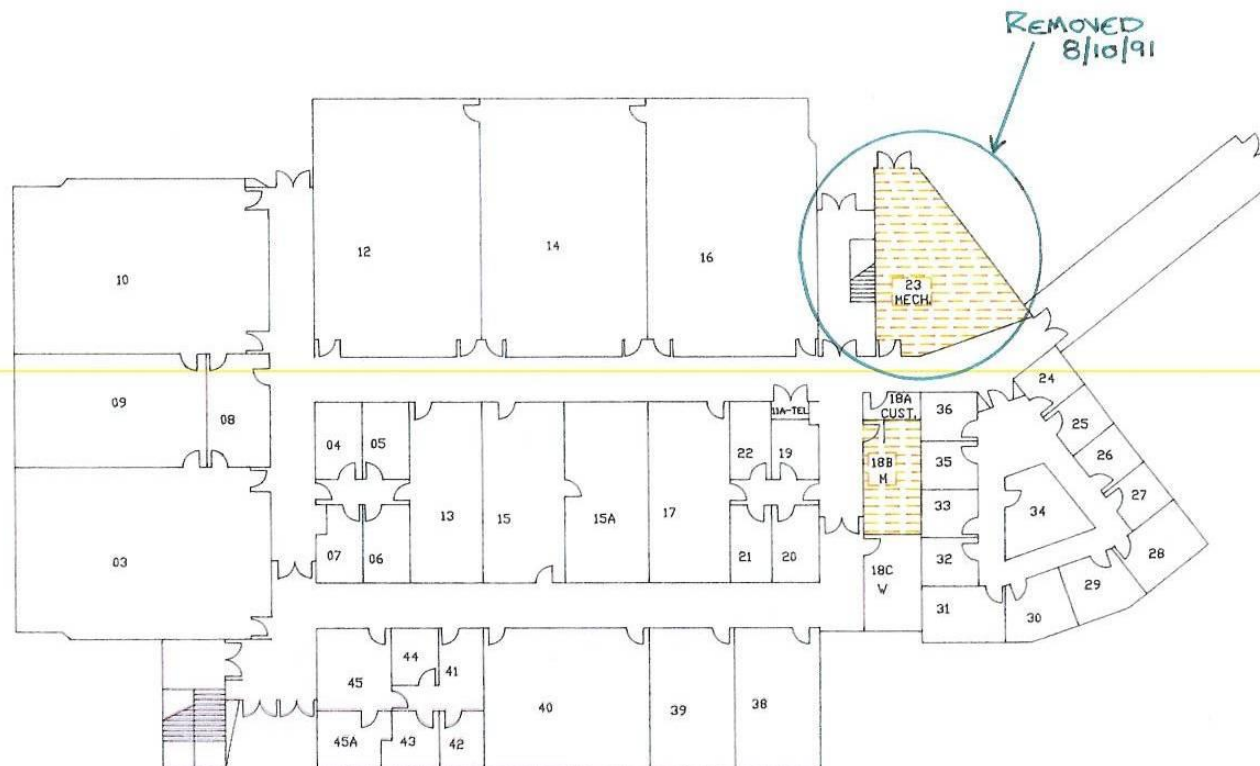
MONTGOMERY COLLEGE
ROCKVILLE CAMPUS
ASBESTOS INVENTORY

APPROVED:

SAMPLE LOCATIONS
BUILDING: SCIWEST

DATE: 03/13/91

DRAWING NO.: SW-GPIF



GROUND FLOOR
AREAS POSITIVE FOR FLEXIBLE DUCT CONNECTORS

REVISED: 08/10/91



SCALE: 1" = 30'

DYNAMAC
CORPORATION

MONTGOMERY COLLEGE
ROCKVILLE CAMPUS
ASBESTOS INVENTORY

APPROVED:

SAMPLE LOCATIONS
BUILDING: SCIWEST

DATE: 03/13/91

DRAWING NO.: SW-GEJ



GROUND FLOOR
AREAS POSITIVE FOR FLOOR TILE
AND MASTIC (ASSUMED)



SCALE: 1" = 30'

DYNAMAC
CORPORATION

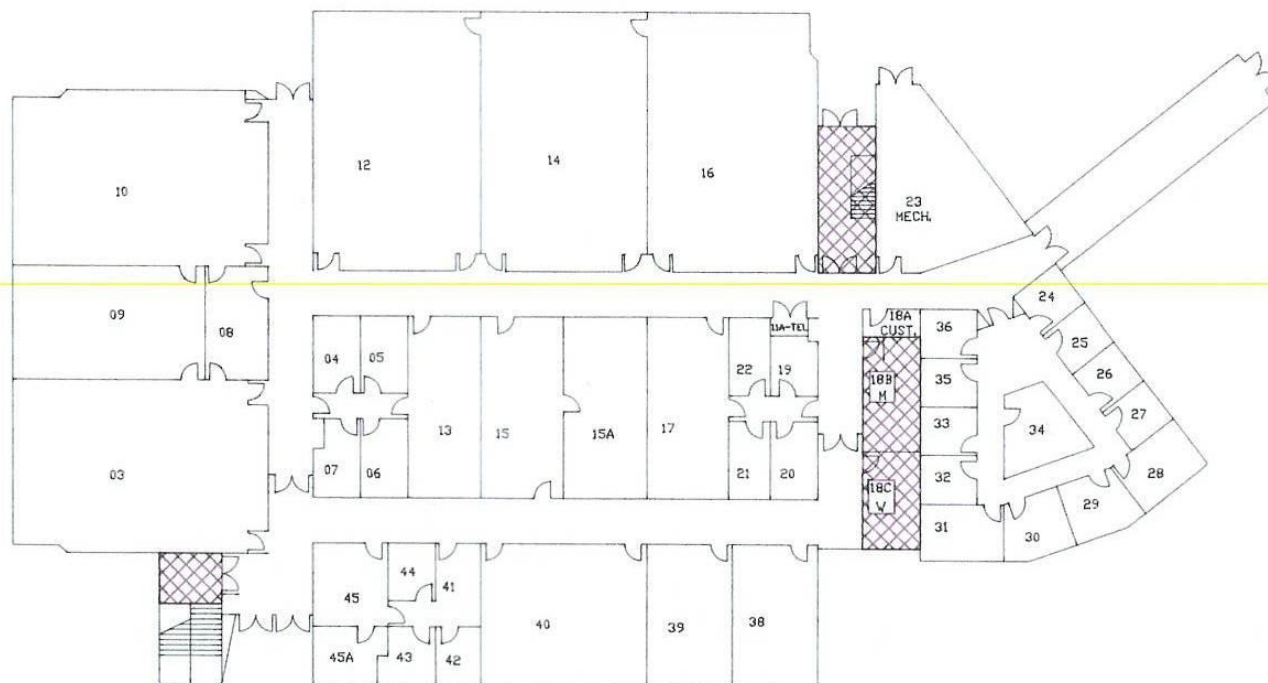
APPROVED:

DATE: 03/13/91

MONTGOMERY COLLEGE
 ROCKVILLE CAMPUS
 ASBESTOS INVENTORY

SAMPLE LOCATIONS
 BUILDING: SCIWEST

DRAWING NO.: SW-G



GROUND FLOOR
AREAS POSITIVE FOR SMOOTH WALL/CEILING PLASTER



DYNAMAC
CORPORATION

MONTGOMERY COLLEGE
 ROCKVILLE CAMPUS
 ASBESTOS INVENTORY

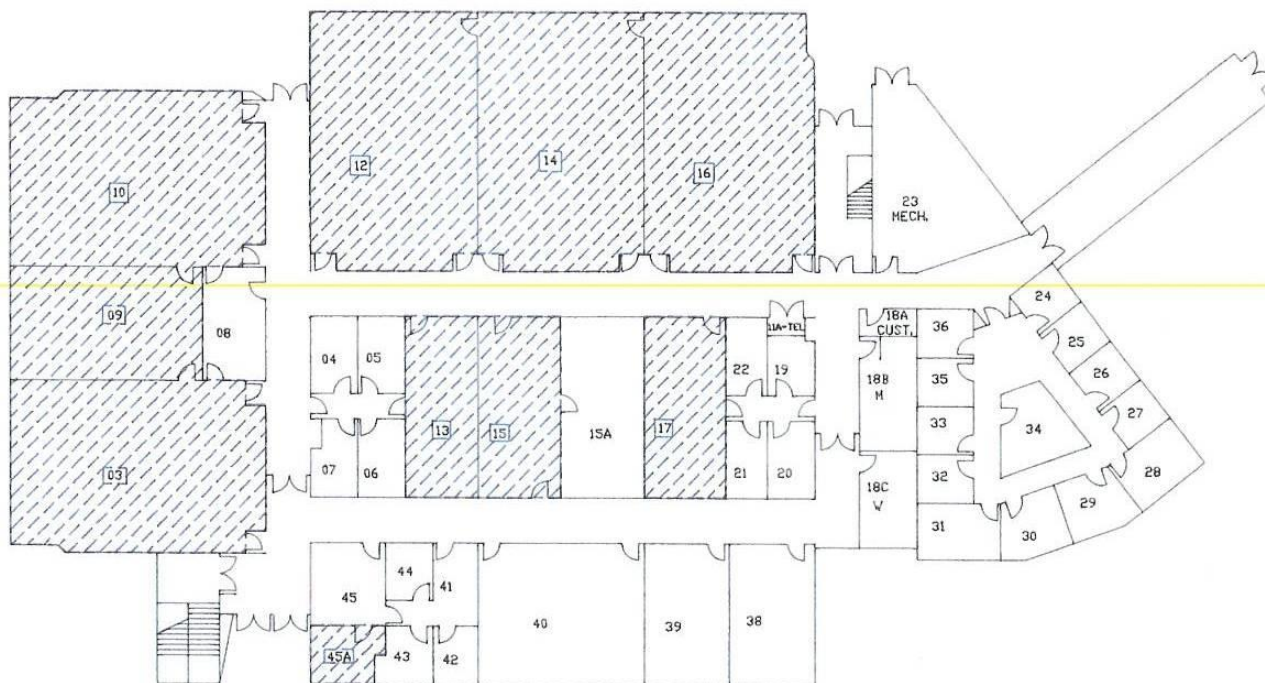
APPROVED:

SAMPLE LOCATIONS
 BUILDING: SCIWEST

SCALE: 1" = 30'

DATE: 03/13/91

DRAWING NO.: SW-GSW



GROUND FLOOR
AREAS POSITIVE FOR TRANSITE INSIDE FUME HOODS



SCALE: 1" = 30'

DYNAMAC
CORPORATION

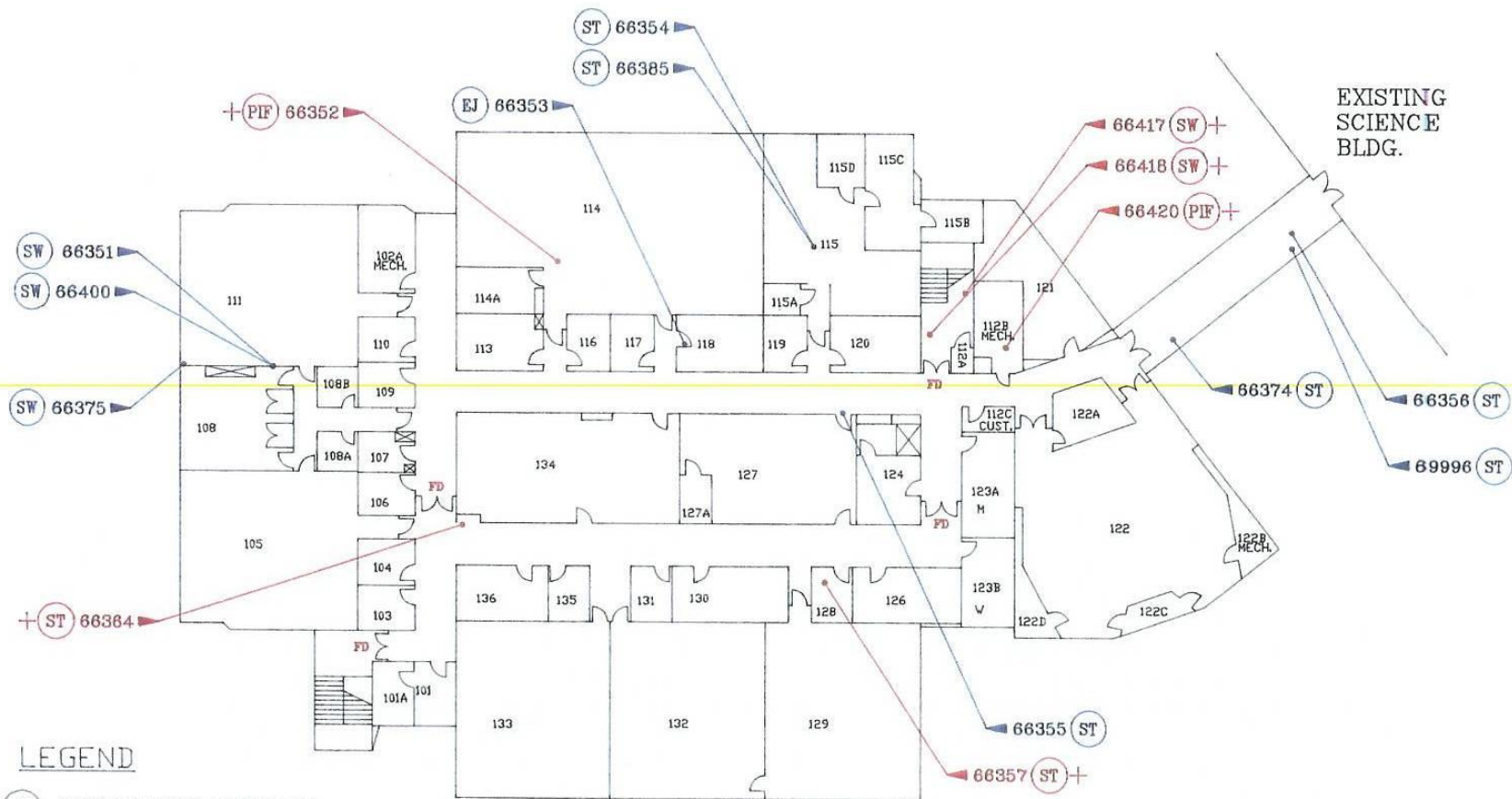
APPROVED:

MONTGOMERY COLLEGE
ROCKVILLE CAMPUS
ASBESTOS INVENTORY

DATE: 03/13/91

SAMPLE LOCATIONS
BUILDING: SCIWEST

DRAWING NO.: SW-GTR



FIRST FLOOR

LEGEND

- (EJ) FLEXIBLE DUCT CONNECTOR
- (PIF) PIPE FITTING INSULATION
- (ST) SUSPENDED CEILING TILES
- (SW) SMOOTH WALL
- (+) DENOTES POSITIVE RESULTS
- FD FIRE DOOR (ASSUMED TO CONTAIN ASBESTOS)



SCALE: 1" = 30'

DYNAMAC
CORPORATION

MONTGOMERY COLLEGE
ROCKVILLE CAMPUS
ASBESTOS INVENTORY

APPROVED:

SAMPLE LOCATIONS
BUILDING: SCIWEST

DATE: 03/13/91

DRAWING NO.: SW-1S

REMOVED 10/11/91

[illegible]

REVISED: 10/11/91
08/13/92



DYNAMAC
CORPORATION

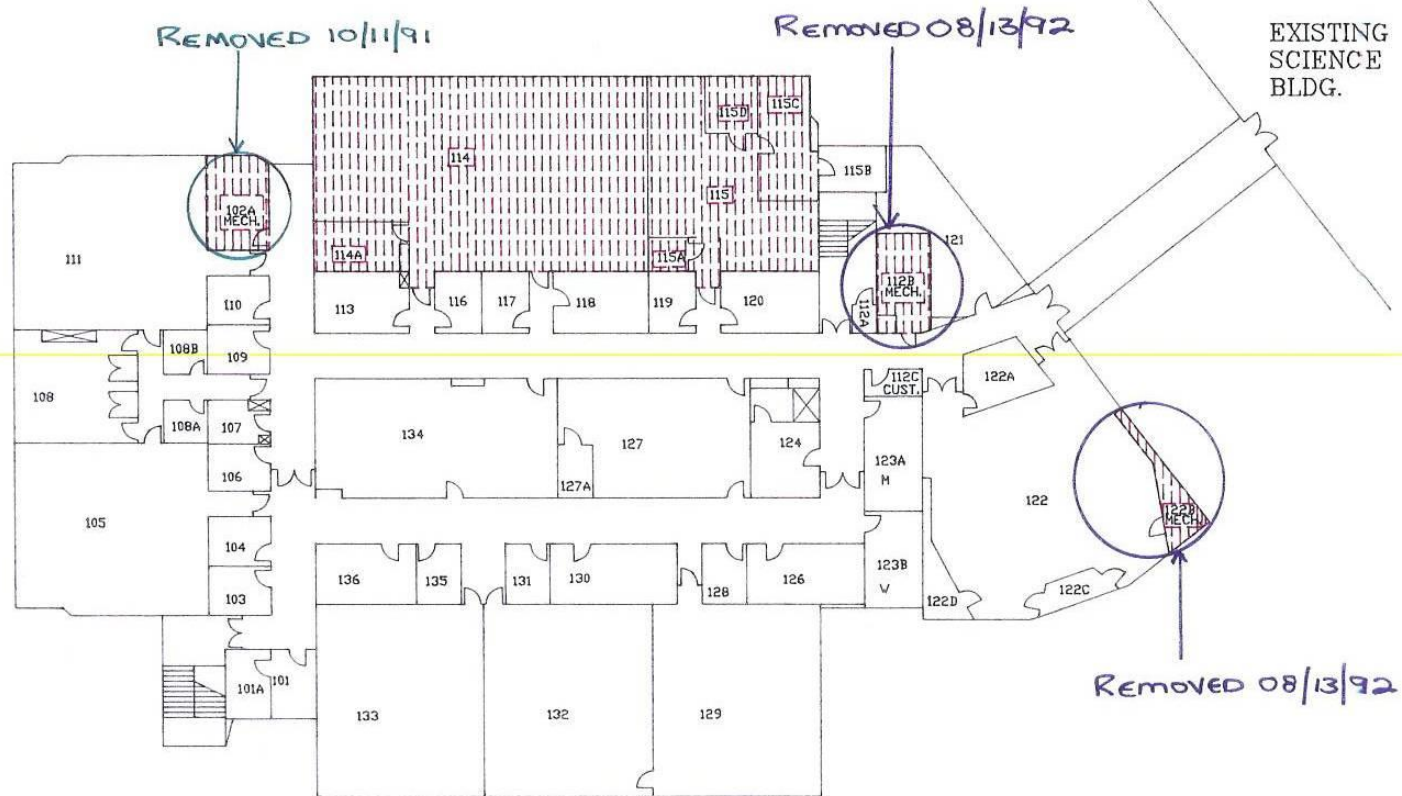
MONTGOMERY COLLEGE
ROCKVILLE CAMPUS
ASBESTOS INVENTORY

APPROVED:

SAMPLE LOCATIONS
BUILDING: SCIWEST

DATE: 03/13/91

DRAWING NO.: SW-1ST



FIRST FLOOR
AREAS POSITIVE FOR PIPE FITTING INSULATION

REVISED: 10/11/91
 08/13/92



DYNAMAC
 CORPORATION

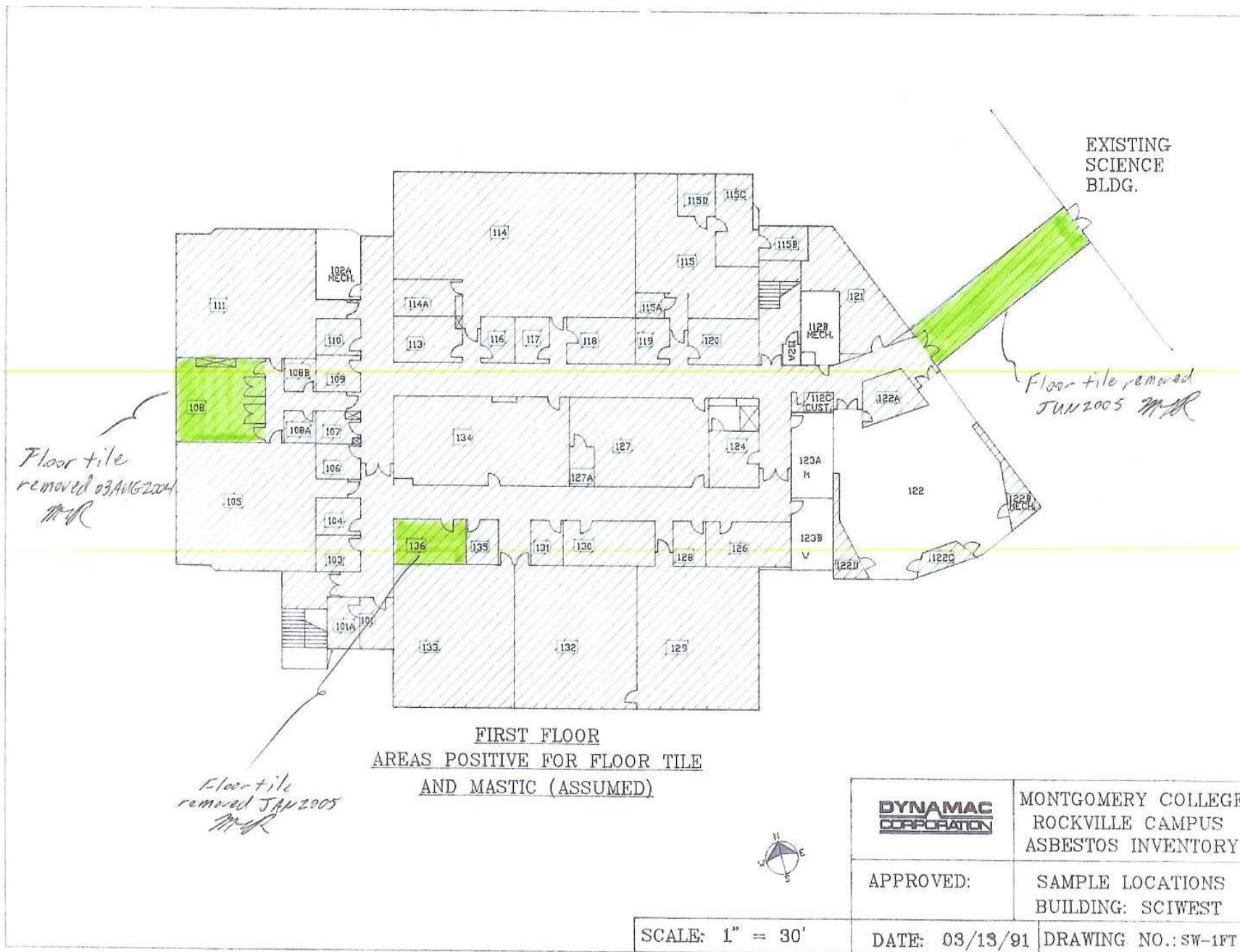
MONTGOMERY COLLEGE
 ROCKVILLE CAMPUS
 ASBESTOS INVENTORY

APPROVED:

SAMPLE LOCATIONS
 BUILDING: SCIWEST

SCALE: 1" = 30'

DATE: 03/13/91 DRAWING NO.: SW-1PIF





EXISTING
SCIENCE
BLDG.

FIRST FLOOR
AREAS POSITIVE FOR TRANSITE INSIDE FUME HOODS



DYNAMAC
CORPORATION

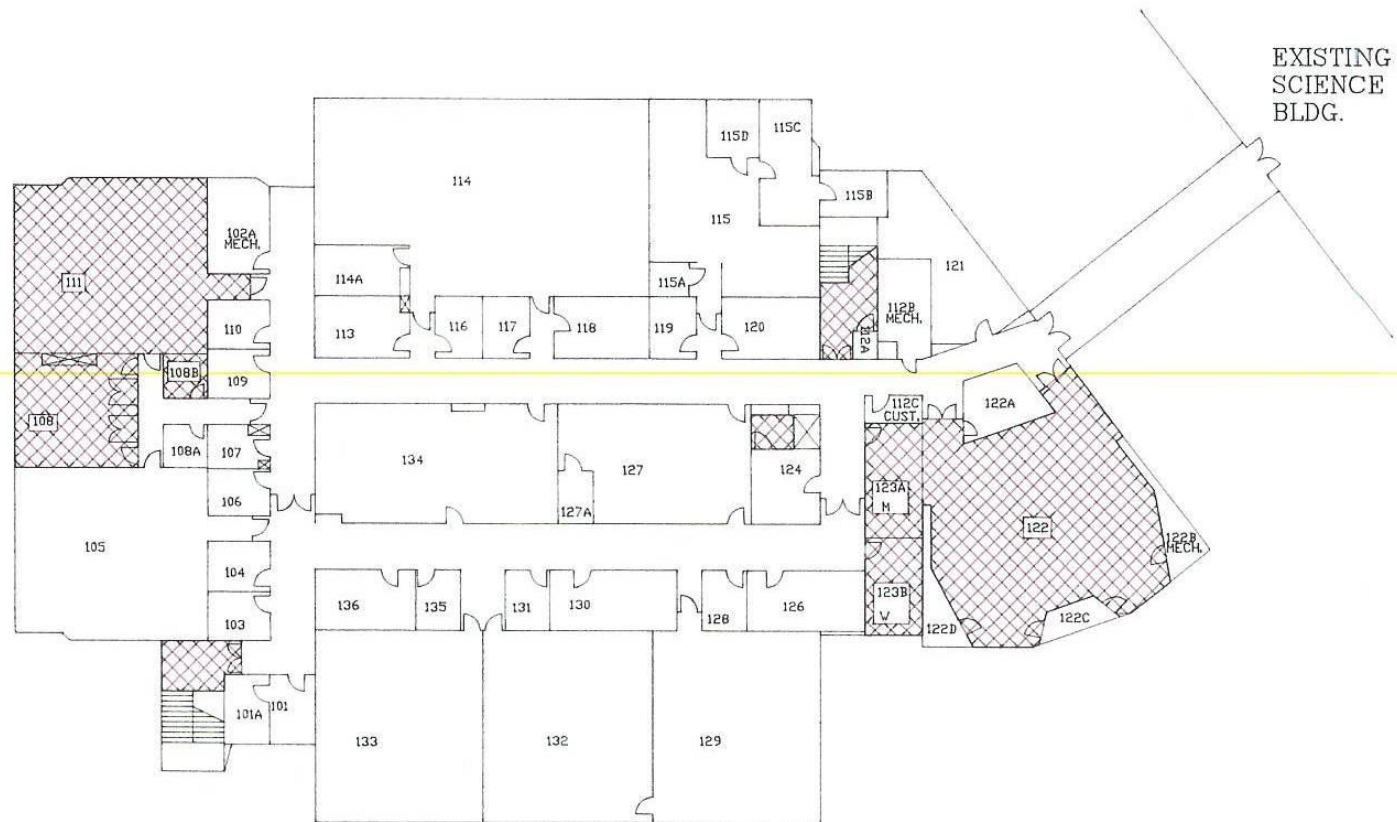
MONTGOMERY COLLEGE
ROCKVILLE CAMPUS
ASBESTOS INVENTORY

APPROVED:

SAMPLE LOCATIONS
BUILDING: SCIWEST

SCALE: 1" = 30'

DATE: 03/13/91 DRAWING NO.: SW-1TR



FIRST FLOOR
AREAS POSITIVE FOR SMOOTH WALL/CEILING PLASTER



DYNAMAC
CORPORATION

MONTGOMERY COLLEGE
ROCKVILLE CAMPUS
ASBESTOS INVENTORY

APPROVED:

SAMPLE LOCATIONS
BUILDING: SCIWEST

SCALE: 1" = 30'

DATE: 03/13/91

DRAWING NO.: SW-1SW