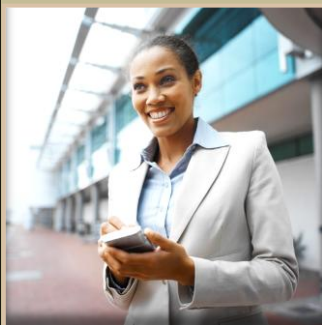


Enrollment Status Reference



Notes: Pell Grant Award Detail

Financial
Aid!

Adjustments for Credit Hours Enrolled

The final amount of your Pell grant is determined using your federal Expected Family Contribution (EFC) and your enrollment level. We always base the initial award on full-time enrollment (minimum of 12 credit hours per semester). It is adjusted for enrollment of three-quarter time (9 to 11 credit hours – 75% of the full-time semester award), half-time (6 to 8 credit hours – 50% of the full-time semester award), and less than half-time (1 to 5 credit hours).

Adjustment for Equivalent Credit Hours

We use your total semester credit hours or equivalent credit hours (for developmental classes) to determine your enrollment level. **This may not match the hours you are billed for tuition.** For example, if you are taking three classes billed at 5 hours each, but they earn 3 credit hours each, you are enrolled in 9 credit hours for the semester and are a three-quarter time student. Some developmental classes earn 0 hours, but are billed at the equivalent of 3 or 5 credit hours. In these cases, we use the equivalent credit hours in your total enrollment. If you have questions, contact the financial aid office.

Adjustment for File Complete Date and Aid

The determination of the credit hours your Pell Grant can pay for is based on your enrollment at the time your financial aid file becomes complete. If your file becomes complete before the semester Pell cut-off date, you are paid for the hours in which you are enrolled on the cut-off date. If your file becomes complete after the cut-off date, your Pell Grant pays for the hours in which you are enrolled on the day you complete your financial aid file. Students who do not enroll full time and do not receive the full amount of Pell Grant in both the fall and spring semesters, or who do not attend either fall or spring semesters, may be eligible for summer Pell Grant. See the Pell Grant link below.

Contact Financial Aid

51 Mannakee Street
Rockville, MD 20850

Tel: 240.567.5100; Fax: 240.567.7814

Link:

[2009-2010 Pell Payment Schedules 2009-2010](#)